

BANK OF HAMILTON

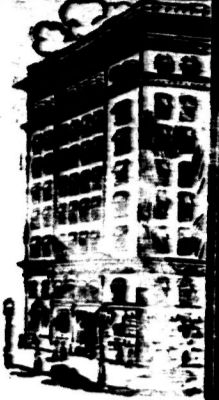
Capital Paid Up . . . \$ 2,750,000
Reserve and Undivided Profits 2,250,000
Total Assets . . . \$5,000,000

It is not easy to alter the habits of a lifetime—no small matter to forsake extravagance and learn to save.

You will never learn unless you have the incentive of a Savings Account.

Do not procrastinate—call at the Bank of Hamilton—and open an account.

J. A. CAMPBELL, Agent,
Jarvis Branch.



THE JARVIS RECORD

Is published every Wednesday at its office on Main Street.

JARVIS - ONTARIO.
Mrs. ELVA E. RODGERS, Proprietress.

Subscription: \$1.00 a Year in Advance (or \$1.20 when not so paid.)

Rates for regular advertisements made known on application.

Transient Advertisements—Eight cents per line for first insertion, and four cents per line each subsequent insertion.

Local Notices—Five cents per line each insertion. Farms to Rent, Strayed Cattle, etc., three insertions for One Dollar.

JOB PRINTING
Excellent facilities for all kinds of Job Printing. Good presses, new type and experienced workmen. Orders by mail will receive prompt attention.

NOTICE TO ADVERTISERS
Advertisers must remember that it is absolutely necessary for copy of change of ad. to be in the hands of the printer not later than Monday noon to insure insertion that week.

The Jarvis Record.
JARVIS, ONT., DEC 27 1911

International Agricultural Institute.

The November issue (No 10) of the Canadian bulletin "Publications of the International Agricultural Institute" devotes its attention particularly to the work of agricultural co-operation.

With reference to the latest data furnished by the Institute concerning the world's crop production, it may be noted that the production of wheat in Russia in 1910, 3,063,000 bushels, compared with 3,063,922,000 for the same countries last year.

When the reports of the harvest of the Southern Hemisphere are in, it is expected they will show a large increase in Australian crop and a large increase in that of Argentina. Recent reports concerning the sowing of winter cereals in Europe are generally favourable. A table giving the world's corn production in 1909, 1910 and 1911 shows the 1911 crop to be 300,000,000 bushels less than 1910. This is explained by the falling off of the crop in the United States where three-fourths of the world's corn is produced.

Concerning co-operation it is pointed out that in Germany there were at the beginning of the present year 2,265 co-operative purchase societies and 15,616 rural co-operative credit societies. To effect the utmost economy and uniformity of method, central purchase societies have been organized of which there are 20 in Germany. These are constantly in contact with each other and always act in unison.

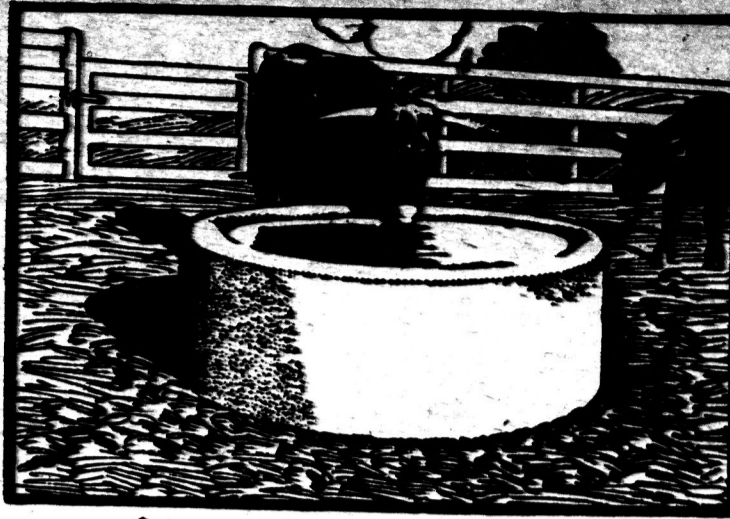
It is admitted in that country that a steam plough cannot be owned and operated profitably when less than 2,500 acres are to be ploughed. For the ploughing of land of less extent, the use of a steam plough is only profitable by hiring or else through the medium of a co-operative society. Such societies are as a rule based on the principle of unlimited liability and the shares of members are from \$120 to \$200. It is established that for a certain number of acres to be ploughed a share must be bought, and it is stipulated that the members' liability should be for ten times the amount of their shares in order that the society may obtain the necessary credit.

Agricultural organization is spreading rapidly in Great Britain. Among other organizations for the advancement of agriculture there is held, in the County of Essex, a series of cock-crowing competitions. It is believed that such matches will do much good to the cause of better poultry, as it has been noticed again and again that the young cockerels which grow first are usually the strongest and by using the strong birds the standard of poultry can be augmented in a few seasons.

An article dealing with organizations in the United States gives the membership of the Farmers' Educational and Co-operative Union, which was formed in Texas some 8 years ago, as 1,000,000. One of the divisions of this organization, known as the Pacific Northwest Farmers' Union, is stated to have decided to send a representative to England to investigate the wheat situation with a view of selling direct to the consumer. He will endeavor to establish a market not only for grain, but for fruit and whatever other farm products the Farmers' Union members may produce.

While Denmark has occupied the foremost position in regard to agricultural co-operation, she has no law governing companies limited by shares nor any special law on co-operative societies. A bill has, however, been very recently drawn up by members interested in agriculture and the co-operative movement, and is being considered by the Minister of Customs and Navigation. For the guidance of Canadians interested in securing better laws relating to co-operation the text of the Danish Bill is given in full.

Under the head of Insurance, it is stated that the condition of cattle intended for slaughter in Germany is governed by the Civil Code, under which the seller is liable, in the case of horses, asses, oxen, humped oxen, sheep and swine, only for certain definite defects and only when these manifest themselves within a definite period. A list and description of the defects, terms, etc. are given.



Which is Your Choice?

Slippy, leaky wooden troughs, or clean, durable Concrete?

Wooden drinking troughs are about as reliable as the weather.

They are short-lived and require replacing every few years—not to mention continual patching to keep them in repair.

The best of wood cannot withstand, for long, constant dampness and soaking. Its tendency to rapid decay soon shows itself in leaks and stagnant pools of water around trough.

Contrast with this the durability, cleanliness and well-ordered appearance of Concrete.

Which?

The dampness which destroys lumber only intensifies the strength and hardness of Concrete.

You can impair a wooden trough with comparatively little use; but it takes a powerful explosive to put a Concrete water tank out of business.

Which

is your choice—expensive-producing Wood, or money-saving Concrete?

We'd be glad to send a copy of our book, "What the Farmer Can Do With Concrete,"—Free—if you'll ask for it. It tells the many uses of Concrete in plain, simple language—tells how to make

- | | | |
|----------------|-----------|------------|
| Barns | Homes | Stables |
| Chimneys | Hotbeds | Staircases |
| Clubs | Icehouses | Sheds |
| Dairies | Manure | Shops |
| Dipping Tanks | Manure | Stables |
| Foundations | Manure | Stables |
| Fence Posts | Manure | Stables |
| Feeding Floors | Manure | Stables |
| Gutters | Manure | Stables |
| | Manure | Stables |

Canada Cement Co.

51-53 National Bank Building, Montreal



We cannot look back upon the past year without feeling that we owe to you sincere thanks for your share in making what has been the greatest and most pleasant year for us.

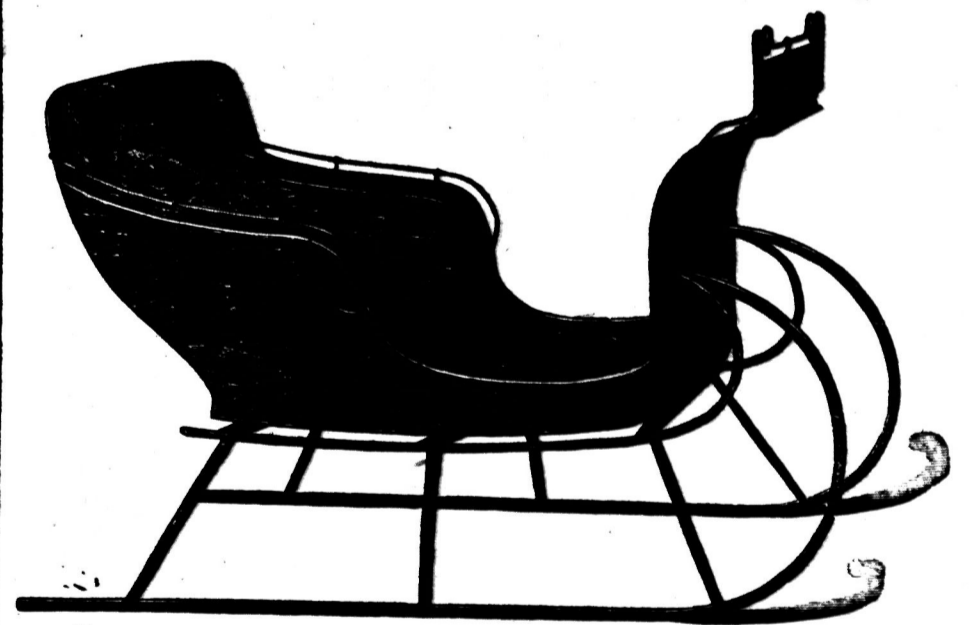
We have endeavored to merit your esteem and good will and feel amply repaid for our efforts by the many pleasant relations we have had with you.

And now we ask you to accept our thanks and our wish that the year nineteen hundred and twelve may be to you a year of hope and happiness and prosperity, and that you may have a heart to enjoy it.

HENRY HOFFMANN,
FURNITURE,

NORFOLK ST., SIMCOE, ONT.

HERE WE ARE WITH OUR 1911-12 Cutters & Sleighs



Our cutters have stood the test in the past and they are still up to the top notch, both in material, workmanship and style. Made with strong gears to stand the bumps.

CALL AND INSPECT THEM and be convinced that we have the Cutter for YOU.

BOOTH & POND, Jarvis

A Rooster Duck.

A peculiar freak of nature can be seen at Joseph Thompson's livery stable, Orillia. It is a rooster duck. The bird is white with a rooster head and comb and a duck's wing and back. It stands like a duck straight up with its body hanging low. It crows like a rooster, and its comb is a peculiar shape, being over an inch in width at the top and about 3 or 4 inches long. It feeds difficulty in getting webbed on its legs. He has also a parrot's beak. It was raised at Atherly. Mr. Thompson says it is a cross between a rooster and a mud hen.

Jarvis School Reports

Form II.	Al	Ar	Geo	Lat	Sp	Hist
R. Smith	90	89	91	85	70	90
R. Ward	64	82	100	56	80	67
H. Sharpe	50	73	85	86	85	—
R. Wilson	77	56	89	61	85	63
M. Moore	47	63	78	92	60	89
X. Montague	37	68	78	70	65	74

Form I.	Al	Ar	Geo	Lat	Sp	Hist
A. Lundy	73	85	74	62	80	63
R. Banks	88	88	88	80	75	63
E. Taylor	64	82	100	56	80	67
I. Jones	79	88	80	69	80	64
E. Davidson	75	68	68	60	58	—
L. McKinnon	98	25	75	84	75	45
I. Mason	80	41	46	58	75	64
J. McSorley	46	41	49	47	96	63
E. Brock	78	36	63	53	78	38
S. Holmes	45	27	—	61	45	57
K. Foster	47	32	—	—	—	48

In Madagascar a man must be a father or pay for the default. If he is unmarried or childless at the age of twenty-five he must contribute to the support of the state, as must also a woman who has remained single or is childless at twenty-four.

We want your Christmas and New Year trade.

We have the goods at the lowest prices

The newest patterns in water sets, decorated jardiniere, cuspidors, toilet sets, water and cream jugs, berry and table sets, cheese dishes, and the newest assortment of decorated china, just imported. Plates, cake dishes, salads, fruits, sugars, puff boxes, hair receivers. Pickle and celery trays, biscuit jars, cups and saucers by the hundreds.

Wishing all a Merry Xmas and a Happy and Prosperous New Year,

Thanking all for past favors I am your respectfully

THE OLD RELIABLE

THE RIGHT PLACE FOR A COUCH

May be determined after you have bought one of our luxurious styles that are marked at a price which puts one in every house.

Our Furniture Store

Has many bargains to show you when you are ready to buy new spring furniture and we wish you to bear in mind that



All Goods Sold Here Are Accompanied By a Guarantee that they are as represented. FURNITURE FOR EVERY ROOM

HOLMES THE FURNITURE MAN

ERIE PHONE 30 FUNERAL DIRECTOR

SOWING HIS WILD OATS REAPING A HARVEST OF SORROW



How many young men can look back on their early life and regret their misdeeds. "Sowing their wild oats" in various ways. Excesses, violation of nature's laws, "wine, women and song"—all have their victims. You have reformed but what about the seed you have sown—what about the harvest? Don't trust to luck. If you are at present within the clutches of any secret habit which is sapping your life by degrees; if you are suffering from the results of past indiscretions; if your blood has been tainted from any private disease and you dare not marry; if you are married and live in dread of symptoms breaking out and exposing your past; if you are suffering as the result of a mispent life—**DRS. K. & K. ARE YOUR REFUGE.** Lay your case before them confidentially and they will tell you honestly if you are curable.

YOU CAN PAY WHEN CURED

We Treat and Cure VARICOSE VEINS, NERVOUS DEBILITY, BLOOD and URINARY COMPLAINTS, KIDNEY and BLADDER Diseases and all Diseases Peculiar to Men.

CONSULTATION FREE. Each Free on Diseases of Men. If unable to call, write for a Question Blank for HOME TREATMENT.

DRS. KENNEDY & KENNEDY

Cor. Michigan Ave. and Griswold St., Detroit, Mich.

NOTICE All letters from Canada must be addressed to our Canadian Correspondence Department in Windsor, Ontario. If you desire to see us personally call at our Medical Institute in Windsor, Ontario as we see and treat our patients in our Windsor offices which are used for correspondence and Laboratory for Canadian business only. Address all letters as follows: **DRS. KENNEDY & KENNEDY, Windsor, Ont.** Write for our private address.

TH
Our
Reg
Shir
Sale Op
E
opened W
—the las
4,200
Prepar
Canada we
power—in
As a re
Men Who
The La
All size
effects, pla
dots, etc.
New
Yokes—ar
notes of t
R. R. FAR
THOM
It is
To protect you
and the rigors of
and Happiness.
death in North
over 90 per cent
and all were the
to allow this ter
Why n
A "PARKY
Absolutely Sanitary
cians and Health Of
es no expensive wat
stalled in any part
spare time; lasts a li
"Parkyte" Chemical
most powerful disinfe
R "Parkyte"
E. T.
A call there will convin
PARKER
1203 McArthur Bl
Branches—
VERI
The Great
Veribrite Veno
dirt stains and s
inal factory new
used, from the
on chair, from
dullest mission
E.
HARDWARE,