

**900 DROPS**

**CASTORIA**  
For Infants and Children.

**Mothers Know That Genuine Castoria Always Bears the Signature of**

*Dr. J. C. Hatcher*

**In Use For Over Thirty Years**

**CASTORIA**

Exact Copy of Wrapper.

**CASTORIA**  
For Infants and Children.

**Mothers Know That Genuine Castoria Always Bears the Signature of**

*Dr. J. C. Hatcher*

**In Use For Over Thirty Years**

**CASTORIA**

**The Jarvis Record**  
ISSUED WEDNESDAYS.

Subscriptions.—One dollar per year strictly in advance; if not paid in advance a dollar and a half will be charged. United States papers 50c. extra, strictly in advance.

We are at all times pleased to receive local news. Send or bring in the facts, we'll do the rest. The contents and goings of Haldimand and Norfolk people are always welcome items of news.

If you wish your address changed, give old as well as new address.

ADVERTISING RATES.

Yearly contract rates on application to publisher.

Reading Notices.—No reading notice advertising any entertainment or matter by which money is to be made by any person or cause will be inserted in the Record without charge, except when the job-work is sent or brought in the facts, we'll do the rest. The contents and goings of Haldimand and Norfolk people are always welcome items of news.

Notice to Advertisers.—Changes of copy for contract advertising must be in the hands of the printers by Monday noon, at the latest, each week.

While willing at all times to do what is possible to accommodate patrons, we insist on a strict enforcement of this rule.

Judicial, Legal, Official and Government notices.—Eight cents per line (12 lines to inch) for the first insertion, and five cents per line for each subsequent insertion.

Small Ads.—Condensed advertisements of such a nature as "Lost," "Found," "Situation Wanted," "To Rent," "For Sale," etc., not exceeding six lines 25c per insertion; 5 insertions \$1.00. Advertisements ordered for insertion without written instructions will appear until written orders are received for their discontinuance.

MRS. ELVA RODGERS, Publisher.

Go to  
**A. RODGERS**  
—FOR—  
Repairing & New Handmade  
**Boots and Shoes.**

**A. RODGERS,**  
JARVIS, ONT.  
Agent for  
Consumers Wallpaper Co.  
See Our Samples.

**Clubbing - Rates**

Subscribers to The Record in Canada are entitled to Clubbing rates on Newspapers as per list and prices given below. Any or all of the Papers below mentioned may be taken or subscribed for by any person.

To determine the price to you of more than one of the papers listed below, deduct \$1.00 from the price given and this will give you the cost of the paper desired. Your early subscription or renewals will be much appreciated. We can quote special rates for a large club, if NEW.

THE JARVIS RECORD and the Saturday Edition Globe, \$1.99

THE JARVIS RECORD and the Family Herald and Wkly Star, 1.85

THE JARVIS RECORD and the Farmers' Sun, 1.85

THE JARVIS RECORD and the Weekly Mail and Empire, 1.85

THE JARVIS RECORD and the Canadian Pictorial, 1.85

THE JARVIS RECORD and the Semi-Weekly Spectator, 1.85

THE JARVIS RECORD and the Semi-Weekly Times, 1.85

THE JARVIS RECORD and the Hamilton Daily Times, 2.85

THE JARVIS RECORD and the Hamilton Daily Herald, 2.85

THE JARVIS RECORD and the Hamilton Daily Spectator, 2.85

THE JARVIS RECORD and the Toronto Evening News, 2.80

THE JARVIS RECORD and the Toronto Evening Star, 2.80

THE JARVIS RECORD and the Toronto Evening Telegram, 2.80

THE JARVIS RECORD and the Toronto Daily Globe, 3.75

THE JARVIS RECORD and the Toronto Mail & Empire, 3.75

THE JARVIS RECORD and the Simcoe Reformer, 1.85

THE JARVIS RECORD and the Cayuga Advocate, 1.85

THE JARVIS RECORD and the Hagersville News, 1.85

THE JARVIS RECORD and the Dunnville Chronicle, 1.85

THE JARVIS RECORD and the Dunnville Gazette, 1.85

THE JARVIS RECORD and the Farm and Dairy, 1.85

THE JARVIS RECORD and the Canadian Farm, 1.85

THE JARVIS RECORD and the London Advertiser, 2.85

**Do You Want To MAKE MONEY?**

**WOMEN AND GIRLS**

**We Have Several Good Positions Open**

The Work is pleasant. The Department is clean and most desirable in every particular.

The best class of girls and women in the town and country are in our employ.

Comfortable boarding places provided at reasonable rates. Accept a position with us and you will be doing your BIT to maintain the commerce of Canada.

Many Girls Make \$12 to \$15 a Week  
Our Average is \$9

**Good Positions also Open for Men and Boys**

Where several of the family accept positions in mill we supply them with one of our modern six roomed houses. Rental \$10.00 monthly.

**THE MONARCH KNITTING CO. LIMITED**  
DUNNVILLE, ONTARIO.  
Manufacturers of Sweater Coats and Knitted Novelties

**Alex. G. Glass,**  
EXPERT

Piano and Organ Tuner & Repairer.  
Residence, 113 Tisdal St., S. Hamilton, Ontario.

Leave all orders at The Record office, Jarvis, Ont. Phone 37.

**Grand Trunk Railway System TIME TABLE**

No 66 to Hamilton	Departs 7:40 a.m.
No 71 to Hamilton	" 8:20 a.m.
No 75 to Hamilton	" 8:20 p.m.
No 65 to St. Thomas	" 10:25 a.m.
No 67 to St. Thomas	" 8:48 p.m.
No 126 to Canfield Junction	" 8:15 a.m.
No 128 to Port Dover	" 8:50 p.m.
No 122 to Port Dover	" 10:25 a.m.
No 124 to Port Dover	" 8:48 p.m.
No 72 to Port Dover via Pt. Dover and Simcoe	Departs 7:10 p.m.

**PATENTS PROMPTLY SECURED**

In all countries. Ask for our INVENTOR'S ADVISER, which will be sent free.

**MARSH & MARION,**  
354 University St., Montreal.

Six o'clock edition, 'shun! Half column Paragraphs by the right—Quick march! Halt! As you were Advance by sections of black-face type! Capit'ns, quick march!

**C. P. R. MILITARY CROSS HERO**

**NOW LIEUT. McARTHUR CAPTURED A TRENCH AND 45 GERMAN. DECORATED BY THE KING.**

It was announced recently that Second-Lieut. William B. McArthur, of the 1st Battalion Royal Scots Fusiliers, second son of Mr. and Mrs. McArthur, of Dunbar, Humberston Road, Dunbar, has been awarded the Military Cross for gallantry at the front. The deed for which he received the award is officially described as follows by the "Surrey Comet" of May 28th last:—

For conspicuous determination when in charge of a working party. With twelve men he captured and brought back as prisoners over forty German sentries.

The gallant officer, who is 23 years of age, returned on leave from France last week, and by Royal Command, intended at Buckingham Palace on Wednesday morning to receive his decoration at the hands of His Majesty the King, along with a number of other young officers.

The full story of the young officer's gallant deed may now be told—a deed in which he displayed a coolness and presence of mind which enabled him to extricate himself and his working party of men from a perilous position and at the same time capture as prisoners-of-war no fewer than 45 armed Germans!

In the early morning of March 27th it was decided to capture three mines in the St. Mihiel salient, and Lieut. McArthur, with twenty men of the Royal Scots Fusiliers, were entrusted with some dangerous work in the vicinity of these mines. Before the Lieutenant and his men could return to safety the mines exploded and the center of the ground was so altered by the explosion that in the darkness the party lost their way. As they were proceeding cautiously in what they thought was the direction of the British trenches, five figures suddenly appeared in front of them. Immediately on Lieut. McArthur's changing the strategy, "Who goes there?" an illuminating shell burst and revealed the helmet of a German officer who was the leading man of the five.

"Halt!" shouted Lieut. McArthur, at the same time drawing his revolver and dropping on his knee. Two shots rang out in the darkness, and the German officer fell mortally wounded; with the remaining three, and an equal number of the officer's companions were accounted for. A corporal with the party then came up from behind, and Lieut. McArthur, seeing the corporal to rest his rifle on his (the Lieutenant's) shoulder, the fifth man was disposed of.

While the German officer was lying on the ground he called for the "brave British officer" to come to him. Suspecting treachery, however, the officer did not have been disarmed, Lieut. McArthur deemed it advisable not to comply with the request, and proceeded with his duties. As the call for the British officer was repeated, the corporal eventually went to ascertain what the German officer wanted. On reaching him the German took an aim from one of his sentries, and



it to the corporal with the request that it should be given to his officer. Lieut. McArthur then made his way cautiously ahead, and to his surprise came upon a trench full of Germans! Maintaining his presence of mind, however, he turned to his handful of men, which now numbered six, and shouted, "Come on, my lads, give them a volley!" The click of the rifles proved sufficient for the Hun, who shouted, "No shoot, no shoot, comrades!" and threw up their hands in token of surrender.

With an empty revolver in one hand and a cane in the other, the brave young officer advanced to the edge of the trench and made signs to the Germans to get out of it, which they gladly did—45 of them, all fully armed! The remainder of Lieut. McArthur's little party now came up, and the Germans were disarmed, made prisoners and marched to the British trenches.

Dawn now commencing to break, the advance of the little party with their prisoners became extremely dangerous, and on one occasion they had a narrow escape of being shot down, by the men in the British trenches, being mistaken for an attacking party of the enemy. However, this danger was ultimately averted, and the party arrived safely at the British trenches with their prisoners, and their appearance naturally caused no little surprise.

Lieut. McArthur was commended by the Postmaster General of the Canadian Pacific Railway to London.

**THE Three Prime Virtues**

—IN A PHOTOGRAPH—

Artistic Quality, Permancy, and Likeness

—OURS HAVE ALL THREE—

**MOORE'S STUDIO**

MAKERS OF QUALITY PHOTOGRAPHS  
PHONE 183  
Norfolk St. Simcoe.

**PARISIAN SAGE**

**PUTS HAIR ON YOUR HEAD AND KEEPS IT THERE**

What's the use of being bald? What sense is there in deliberately allowing your hair to turn gray?

Do you want to look old before your time? Give up the thought; old age will come only too soon.

Look after your hair. **PARISIAN SAGE** will kill the dandruff germs, and is the only preparation so far as we know, that is guaranteed to do so.

Man or woman, no matter how old you are, **PARISIAN SAGE** will make you look young.

Come in and get a large bottle to-day. It only costs 50 cents, and your money back if it does not cure dandruff, stop falling hair, or itching of the scalp. It will make your hair luxuriant, bright and beautiful, and it is the most refreshing, pleasant and invigorating hair dressing made.

For Sale By  
**J. R. Seater, Jarvis**

**SOCK KNITTING.**

The following note on how to finish off the toe of socks being knitted for the soldiers by the ladies of the Haldimand Sock Batt. will be of interest to the workers and satisfaction to the Committee in charge.

TOE—Divide the 60 stitches between the three needles, 23 on each.

1st row—Knit together 1st and 2nd stitches on each needle.

2nd row—Knit together 2nd and 3rd stitches on each needle.

3rd row—Knit together 3rd and 4th stitches on each needle.

And so on, beginning again with 1st and 2nd stitches after reaching the last stitches on each needle. Decrease to nine stitches. Draw wool through stitches, and darn in carefully.

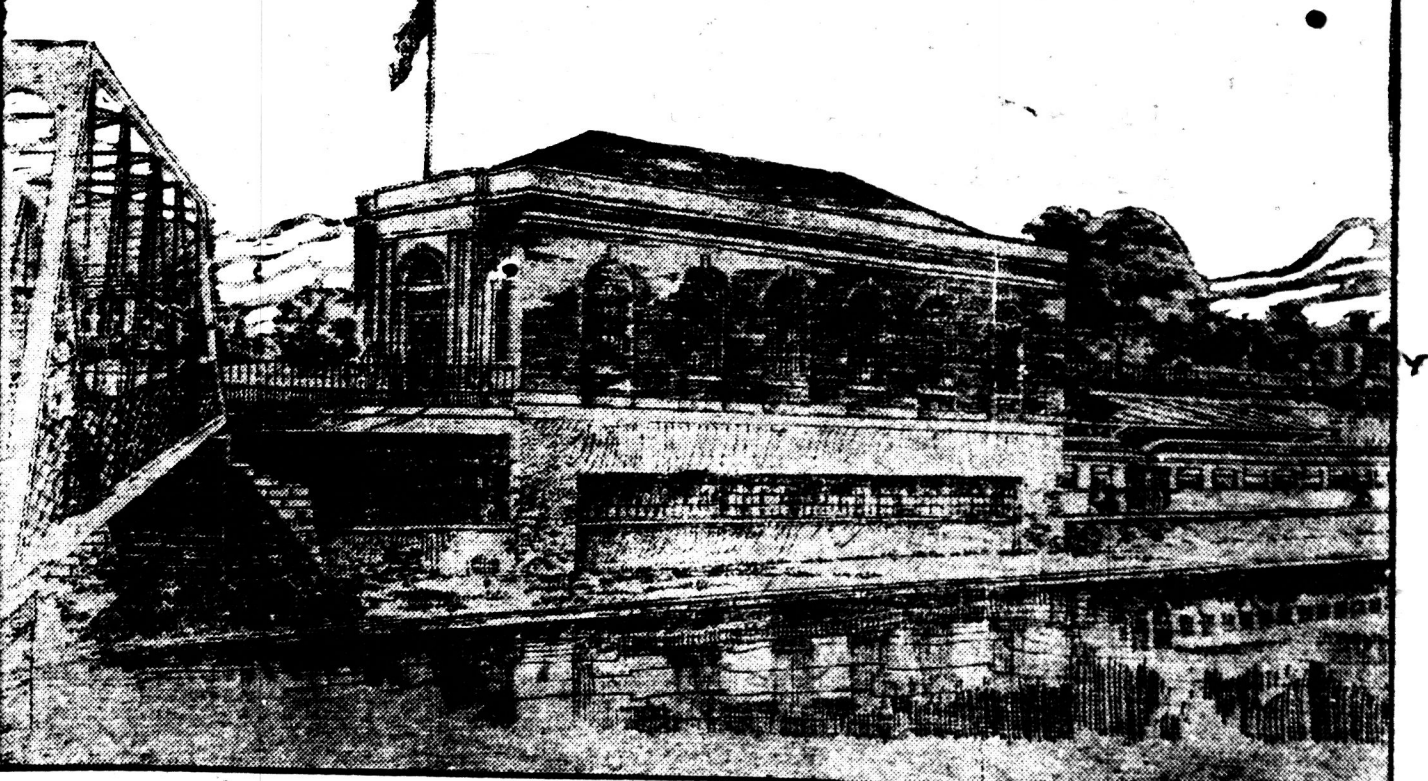
**Cut This Out**

It is worth your fare to Hamilton and return on an account of \$10.00 or over.

**DR. FRD L. WILLIAMSON,**  
Dentist,  
3 Blocks west of King St. Station  
Hamilton, Ontario.

**TRY RECORD ADS IT PAYS**

**New L. E. and N. Station at Brantford.**



The Lake Erie and Northern Railway, a subsidiary of the C.P.R., and the Brantford and Hamilton Railway, a subsidiary of the Dominion Power and Transmission Co., entered into an agreement recently to build a joint station in Brantford, Ont., and, as already stated in Canadian Railway and Marine World, the contract for its erection was let to Schultz Bros. Co., contingent on satisfactory arrangements being made with the city in to contain a main waiting room, 35 x 55 ft., women's waiting room and lavatory, men's lavatory, and a third and telephone office. The building, located over the tracks at the southwest corner of Colburn and Water Streets, with 33 ft. frontage on Colburn St., and 76 on Water St., and tracks to pass beneath the main floor of the building, with platforms, express and baggage accommodation at the lower level. The design is New England, Colonial style; red brick, with limestone trimmings and green slate roof. The main floor, at street level, with entrance from Colburn St., is to contain a main waiting room, 35 x 55 ft., women's waiting room and lavatory, men's lavatory, and a third and telephone office. The building, located over the tracks at the southwest corner of Colburn and Water Streets, with 33 ft. frontage on Colburn St., and 76 on Water St., and tracks to pass beneath the main floor of the building, with platforms, express and baggage accommodation at the lower level. The design is New England, Colonial style; red brick, with limestone trimmings and green slate roof. The main floor, at street level, with entrance from Colburn St., is to contain a main waiting room, 35 x 55 ft., women's waiting room and lavatory, men's lavatory, and a third and telephone office. The building, located over the tracks at the southwest corner of Colburn and Water Streets, with 33 ft. frontage on Colburn St., and 76 on Water St., and tracks to pass beneath the main floor of the building, with platforms, express and baggage accommodation at the lower level. The design is New England, Colonial style; red brick, with limestone trimmings and green slate roof. The main floor, at street level, with entrance from Colburn St., is to contain a main waiting room, 35 x 55 ft., women's waiting room and lavatory, men's lavatory, and a third and telephone office. The building, located over the tracks at the southwest corner of Colburn and Water Streets, with 33 ft. frontage on Colburn St., and 76 on Water St., and tracks to pass beneath the main floor of the building, with platforms, express and baggage accommodation at the lower level. The design is New England, Colonial style; red brick, with limestone trimmings and green slate roof. The main floor, at street level, with entrance from Colburn St., is to contain a main waiting room, 35 x 55 ft., women's waiting room and lavatory, men's lavatory, and a third and telephone office. The building, located over the tracks at the southwest corner of Colburn and Water Streets, with 33 ft. frontage on Colburn St., and 76 on Water St., and tracks to pass beneath the main floor of the building, with platforms, express and baggage accommodation at the lower level. The design is New England, Colonial style; red brick, with limestone trimmings and green slate roof. The main floor, at street level, with entrance from Colburn St., is to contain a main waiting room, 35 x 55 ft., women's waiting room and lavatory, men's lavatory, and a third and telephone office. The building, located over the tracks at the southwest corner of Colburn and Water Streets, with 33 ft. frontage on Colburn St., and 76 on Water St., and tracks to pass beneath the main floor of the building, with platforms, express and baggage accommodation at the lower level. The design is New England, Colonial style; red brick, with limestone trimmings and green slate roof. The main floor, at street level, with entrance from Colburn St., is to contain a main waiting room, 35 x 55 ft., women's waiting room and lavatory, men's lavatory, and a third and telephone office. The building, located over the tracks at the southwest corner of Colburn and Water Streets, with 33 ft. frontage on Colburn St., and 76 on Water St., and tracks to pass beneath the main floor of the building, with platforms, express and baggage accommodation at the lower level. The design is New England, Colonial style; red brick, with limestone trimmings and green slate roof. The main floor, at street level, with entrance from Colburn St., is to contain a main waiting room, 35 x 55 ft., women's waiting room and lavatory, men's lavatory, and a third and telephone office. The building, located over the tracks at the southwest corner of Colburn and Water Streets, with 33 ft. frontage on Colburn St., and 76 on Water St., and tracks to pass beneath the main floor of the building, with platforms, express and baggage accommodation at the lower level. The design is New England, Colonial style; red brick, with limestone trimmings and green slate roof. The main floor, at street level, with entrance from Colburn St., is to contain a main waiting room, 35 x 55 ft., women's waiting room and lavatory, men's lavatory, and a third and telephone office. The building, located over the tracks at the southwest corner of Colburn and Water Streets, with 33 ft. frontage on Colburn St., and 76 on Water St., and tracks to pass beneath the main floor of the building, with platforms, express and baggage accommodation at the lower level. The design is New England, Colonial style; red brick, with limestone trimmings and green slate roof. The main floor, at street level, with entrance from Colburn St., is to contain a main waiting room, 35 x 55 ft., women's waiting room and lavatory, men's lavatory, and a third and telephone office. The building, located over the tracks at the southwest corner of Colburn and Water Streets, with 33 ft. frontage on Colburn St., and 76 on Water St., and tracks to pass beneath the main floor of the building, with platforms, express and baggage accommodation at the lower level. The design is New England, Colonial style; red brick, with limestone trimmings and green slate roof. The main floor, at street level, with entrance from Colburn St., is to contain a main waiting room, 35 x 55 ft., women's waiting room and lavatory, men's lavatory, and a third and telephone office. The building, located over the tracks at the southwest corner of Colburn and Water Streets, with 33 ft. frontage on Colburn St., and 76 on Water St., and tracks to pass beneath the main floor of the building, with platforms, express and baggage accommodation at the lower level. The design is New England, Colonial style; red brick, with limestone trimmings and green slate roof. The main floor, at street level, with entrance from Colburn St., is to contain a main waiting room, 35 x 55 ft., women's waiting room and lavatory, men's lavatory, and a third and telephone office. The building, located over the tracks at the southwest corner of Colburn and Water Streets, with 33 ft. frontage on Colburn St., and 76 on Water St., and tracks to pass beneath the main floor of the building, with platforms, express and baggage accommodation at the lower level. The design is New England, Colonial style; red brick, with limestone trimmings and green slate roof. The main floor, at street level, with entrance from Colburn St., is to contain a main waiting room, 35 x 55 ft., women's waiting room and lavatory, men's lavatory, and a third and telephone office. The building, located over the tracks at the southwest corner of Colburn and Water Streets, with 33 ft. frontage on Colburn St., and 76 on Water St., and tracks to pass beneath the main floor of the building, with platforms, express and baggage accommodation at the lower level. The design is New England, Colonial style; red brick, with limestone trimmings and green slate roof. The main floor, at street level, with entrance from Colburn St., is to contain a main waiting room, 35 x 55 ft., women's waiting room and lavatory, men's lavatory, and a third and telephone office. The building, located over the tracks at the southwest corner of Colburn and Water Streets, with 33 ft. frontage on Colburn St., and 76 on Water St., and tracks to pass beneath the main floor of the building, with platforms, express and baggage accommodation at the lower level. The design is New England, Colonial style; red brick, with limestone trimmings and green slate roof. The main floor, at street level, with entrance from Colburn St., is to contain a main waiting room, 35 x 55 ft., women's waiting room and lavatory, men's lavatory, and a third and telephone office. The building, located over the tracks at the southwest corner of Colburn and Water Streets, with 33 ft. frontage on Colburn St., and 76 on Water St., and tracks to pass beneath the main floor of the building, with platforms, express and baggage accommodation at the lower level. The design is New England, Colonial style; red brick, with limestone trimmings and green slate roof. The main floor, at street level, with entrance from Colburn St., is to contain a main waiting room, 35 x 55 ft., women's waiting room and lavatory, men's lavatory, and a third and telephone office. The building, located over the tracks at the southwest corner of Colburn and Water Streets, with 33 ft. frontage on Colburn St., and 76 on Water St., and tracks to pass beneath the main floor of the building, with platforms, express and baggage accommodation at the lower level. The design is New England, Colonial style; red brick, with limestone trimmings and green slate roof. The main floor, at street level, with entrance from Colburn St., is to contain a main waiting room, 35 x 55 ft., women's waiting room and lavatory, men's lavatory, and a third and telephone office. The building, located over the tracks at the southwest corner of Colburn and Water Streets, with 33 ft. frontage on Colburn St., and 76 on Water St., and tracks to pass beneath the main floor of the building, with platforms, express and baggage accommodation at the lower level. The design is New England, Colonial style; red brick, with limestone trimmings and green slate roof. The main floor, at street level, with entrance from Colburn St., is to contain a main waiting room, 35 x 55 ft., women's waiting room and lavatory, men's lavatory, and a third and telephone office. The building, located over the tracks at the southwest corner of Colburn and Water Streets, with 33 ft. frontage on Colburn St., and 76 on Water St., and tracks to pass beneath the main floor of the building, with platforms, express and baggage accommodation at the lower level. The design is New England, Colonial style; red brick, with limestone trimmings and green slate roof. The main floor, at street level, with entrance from Colburn St., is to contain a main waiting room, 35 x 55 ft., women's waiting room and lavatory, men's lavatory, and a third and telephone office. The building, located over the tracks at the southwest corner of Colburn and Water Streets, with 33 ft. frontage on Colburn St., and 76 on Water St., and tracks to pass beneath the main floor of the building, with platforms, express and baggage accommodation at the lower level. The design is New England, Colonial style; red brick, with limestone trimmings and green slate roof. The main floor, at street level, with entrance from Colburn St., is to contain a main waiting room, 35 x 55 ft., women's waiting room and lavatory, men's lavatory, and a third and telephone office. The building, located over the tracks at the southwest corner of Colburn and Water Streets, with 33 ft. frontage on Colburn St., and 76 on Water St., and tracks to pass beneath the main floor of the building, with platforms, express and baggage accommodation at the lower level. The design is New England, Colonial style; red brick, with limestone trimmings and green slate roof. The main floor, at street level, with entrance from Colburn St., is to contain a main waiting room, 35 x 55 ft., women's waiting room and lavatory, men's lavatory, and a third and telephone office. The building, located over the tracks at the southwest corner of Colburn and Water Streets, with 33 ft. frontage on Colburn St., and 76 on Water St., and tracks to pass beneath the main floor of the building, with platforms, express and baggage accommodation at the lower level. The design is New England, Colonial style; red brick, with limestone trimmings and green slate roof. The main floor, at street level, with entrance from Colburn St., is to contain a main waiting room, 35 x 55 ft., women's waiting room and lavatory, men's lavatory, and a third and telephone office. The building, located over the tracks at the southwest corner of Colburn and Water Streets, with 33 ft. frontage on Colburn St., and 76 on Water St., and tracks to pass beneath the main floor of the building, with platforms, express and baggage accommodation at the lower level. The design is New England, Colonial style; red brick, with limestone trimmings and green slate roof. The main floor, at street level, with entrance from Colburn St., is to contain a main waiting room, 35 x 55 ft., women's waiting room and lavatory, men's lavatory, and a third and telephone office. The building, located over the tracks at the southwest corner of Colburn and Water Streets, with 33 ft. frontage on Colburn St., and 76 on Water St., and tracks to pass beneath the main floor of the building, with platforms, express and baggage accommodation at the lower level. The design is New England, Colonial style; red brick, with limestone trimmings and green slate roof. The main floor, at street level, with entrance from Colburn St., is to contain a main waiting room, 35 x 55 ft., women's waiting room and lavatory, men's lavatory, and a third and telephone office. The building, located over the tracks at the southwest corner of Colburn and Water Streets, with 33 ft. frontage on Colburn St., and 76 on Water St., and tracks to pass beneath the main floor of the building, with platforms, express and baggage accommodation at the lower level. The design is New England, Colonial style; red brick, with limestone trimmings and green slate roof. The main floor, at street level, with entrance from Colburn St., is to contain a main waiting room, 35 x 55 ft., women's waiting room and lavatory, men's lavatory, and a third and telephone office. The building, located over the tracks at the southwest corner of Colburn and Water Streets, with 33 ft. frontage on Colburn St., and 76 on Water St., and tracks to pass beneath the main floor of the building, with platforms, express and baggage accommodation at the lower level. The design is New England, Colonial style; red brick, with limestone trimmings and green slate roof. The main floor, at street level, with entrance from Colburn St., is to contain a main waiting room, 35 x 55 ft., women's waiting room and lavatory, men's lavatory, and a third and telephone office. The building, located over the tracks at the southwest corner of Colburn and Water Streets, with 33 ft. frontage on Colburn St., and 76 on Water St., and tracks to pass beneath the main floor of the building, with platforms, express and baggage accommodation at the lower level. The design is New England, Colonial style; red brick, with limestone trimmings and green slate roof. The main floor, at street level, with entrance from Colburn St., is to contain a main waiting room, 35 x 55 ft., women's waiting room and lavatory, men's lavatory, and a third and telephone office. The building, located over the tracks at the southwest corner of Colburn and Water Streets, with 33 ft. frontage on Colburn St., and 76 on Water St., and tracks to pass beneath the main floor of the building, with platforms, express and baggage accommodation at the lower level. The design is New England, Colonial style; red brick, with limestone trimmings and green slate roof. The main floor, at street level, with entrance from Colburn St., is to contain a main waiting room, 35 x 55 ft., women's waiting room and lavatory, men's lavatory, and a third and telephone office. The building, located over the tracks at the southwest corner of Colburn and Water Streets, with 33 ft. frontage on Colburn St., and 76 on Water St., and tracks to pass beneath the main floor of the building, with platforms, express and baggage accommodation at the lower level. The design is New England, Colonial style; red brick, with limestone trimmings and green slate roof. The main floor, at street level, with entrance from Colburn St., is to contain a main waiting room, 35 x 55 ft., women's waiting room and lavatory, men's lavatory, and a third and telephone office. The building, located over the tracks at the southwest corner of Colburn and Water Streets, with 33 ft. frontage on Colburn St., and 76 on Water St., and tracks to pass beneath the main floor of the building, with platforms, express and baggage accommodation at the lower level. The design is New England, Colonial style; red brick, with limestone trimmings and green slate roof. The main floor, at street level, with entrance from Colburn St., is to contain a main waiting room, 35 x 55 ft., women's waiting room and lavatory, men's lavatory, and a third and telephone office. The building, located over the tracks at the southwest corner of Colburn and Water Streets, with 33 ft. frontage on Colburn St., and 76 on Water St., and tracks to pass beneath the main floor of the building, with platforms, express and baggage accommodation at the lower level. The design is New England, Colonial style; red brick, with limestone trimmings and green slate roof. The main floor, at street level, with entrance from Colburn St., is to contain a main waiting room, 35 x 55 ft., women's waiting room and lavatory, men's lavatory, and a third and telephone office. The building, located over the tracks at the southwest corner of Colburn and Water Streets, with 33 ft. frontage on Colburn St., and 76 on Water St., and tracks to pass beneath the main floor of the building, with platforms, express and baggage accommodation at the lower level. The design is New England, Colonial style; red brick, with limestone trimmings and green slate roof. The main floor, at street level, with entrance from Colburn St., is to contain a main waiting room, 35 x 55 ft., women's waiting room and lavatory, men's lavatory, and a third and telephone office. The building, located over the tracks at the southwest corner of Colburn and Water Streets, with 33 ft. frontage on Colburn St., and 76 on Water St., and tracks to pass beneath the main floor of the building, with platforms, express and baggage accommodation at the lower level. The design is New England, Colonial style; red brick, with limestone trimmings and green slate roof. The main floor, at street level, with entrance from Colburn St., is to contain a main waiting room, 35 x 55 ft., women's waiting room and lavatory, men's lavatory, and a third and telephone office. The building, located over the tracks at the southwest corner of Colburn and Water Streets, with 33 ft. frontage on Colburn St., and 76 on Water St., and tracks to pass beneath the main floor of the building, with platforms, express and baggage accommodation at the lower level. The design is New England, Colonial style; red brick, with limestone trimmings and green slate roof. The main floor, at street level, with entrance from Colburn St., is to contain a main waiting room, 35 x 55 ft., women's waiting room and lavatory, men's lavatory, and a third and telephone office. The building, located over the tracks at the southwest corner of Colburn and Water Streets, with 33 ft. frontage on Colburn St., and 76 on Water St., and tracks to pass beneath the main floor of the building, with platforms, express and baggage accommodation at the lower level. The design is New England, Colonial style; red brick, with limestone trimmings and green slate roof. The main floor, at street level, with entrance from Colburn St., is to contain a main waiting room, 35 x 55 ft., women's waiting room and lavatory, men's lavatory, and a third and telephone office. The building, located over the tracks at the southwest corner of Colburn and Water Streets, with 33 ft. frontage on Colburn St., and 76 on Water St., and tracks to pass beneath the main floor of the building, with platforms, express and baggage accommodation at the lower level. The design is New England, Colonial style; red brick, with limestone trimmings and green slate roof. The main floor, at street level, with entrance from Colburn St., is to contain a main waiting room, 35 x 55 ft., women's waiting room and lavatory, men's lavatory, and a third and telephone office. The building, located over the tracks at the southwest corner of Colburn and Water Streets, with 33 ft. frontage on Colburn St., and 76 on Water St., and tracks to pass beneath the main floor of the building, with platforms, express and baggage accommodation at the lower level. The design is New England, Colonial style; red brick, with limestone trimmings and green slate roof. The main floor, at street level, with entrance from Colburn St., is to contain a main waiting room, 35 x 55 ft., women's waiting room and lavatory, men's lavatory, and a third and telephone office. The building, located over the tracks at the southwest corner of Colburn and Water Streets, with 33 ft. frontage on Colburn St., and 76 on Water St., and tracks to pass beneath the main floor of the building, with platforms, express and baggage accommodation at the lower level. The design is New England, Colonial style; red brick, with limestone trimmings and green slate roof. The main floor, at street level, with entrance from Colburn St., is to contain a main waiting room, 35 x 55 ft., women's waiting room and lavatory, men's lavatory, and a third and telephone office. The building, located over the tracks at the southwest corner of Colburn and Water Streets, with 33 ft. frontage on Colburn St., and 76 on Water St., and tracks to pass beneath the main floor of the building, with platforms, express and baggage accommodation at the lower level. The design is New England, Colonial style; red brick, with limestone trimmings and green slate roof. The main floor, at street level, with entrance from Colburn St., is to contain a main waiting room, 35 x 55 ft., women's waiting room and lavatory, men's lavatory, and a third and telephone office. The building, located over the tracks at the southwest corner of Colburn and Water Streets, with 33 ft. frontage on Colburn St., and 76 on Water St., and tracks to pass beneath the main floor of the building, with platforms, express and baggage accommodation at the lower level. The design is New England, Colonial style; red brick, with limestone trimmings and green slate roof. The main floor, at street level, with entrance from Colburn St., is to contain a main waiting room, 35 x 55 ft., women's waiting room and lavatory, men's lavatory, and a third and telephone office. The building, located over the tracks at the southwest corner of Colburn and Water Streets, with 33 ft. frontage on Colburn St., and 76 on Water St., and tracks to pass beneath the main floor of the building, with platforms, express and baggage accommodation at the lower level. The design is New England, Colonial style; red brick, with limestone trimmings and green slate roof. The main floor, at street level, with entrance from Colburn St., is to contain a main waiting room, 35 x 55 ft., women's waiting room and lavatory, men's lavatory, and a third and telephone office. The building, located over the tracks at the southwest corner of Colburn and Water Streets, with 33 ft. frontage on Colburn St., and 76 on Water St., and tracks to pass beneath the main floor of the building, with platforms, express and baggage accommodation at the lower level. The design is New England, Colonial style; red brick, with limestone trimmings and green slate roof. The main floor, at street level, with entrance from Colburn St., is to contain a main waiting room, 35 x 55 ft., women's waiting room and lavatory, men's lavatory, and a third and telephone office. The building, located over the tracks at the southwest corner of Colburn and Water Streets, with 33 ft. frontage on Colburn St., and 76 on Water St., and tracks to pass beneath the main floor of the building, with platforms, express and baggage accommodation at the lower level. The design is New England, Colonial style; red brick, with limestone trimmings and green slate roof. The main floor, at street level, with entrance from Colburn St., is to contain a main waiting room, 35 x 55 ft., women's waiting room and lavatory, men's lavatory, and a third and telephone office. The building, located over the tracks at the southwest corner of Colburn and Water Streets, with 33 ft. frontage on Colburn St., and 76 on Water St., and tracks to pass beneath the main floor of the building, with platforms, express and baggage accommodation at the lower level. The design is New England, Colonial style; red brick, with limestone trimmings and green slate roof. The main floor, at street level, with entrance from Colburn St., is to contain a main waiting room, 35 x 55 ft., women's waiting room and lavatory, men's lavatory, and a third and telephone office. The building, located over the tracks at the southwest corner of Colburn and Water Streets, with 33 ft. frontage on Colburn St., and 76 on Water St., and tracks to pass beneath the main floor of the building, with platforms, express and baggage accommodation at the lower level. The design is New England, Colonial style; red brick, with limestone trimmings and green slate roof. The main floor, at street level, with entrance from Colburn St., is to contain a main waiting room, 35 x 55 ft., women's waiting room and lavatory, men's lavatory, and a third and telephone office. The building, located over the tracks at the southwest corner of Colburn and Water Streets, with 33 ft. frontage on Colburn St., and 76 on Water St., and tracks to pass beneath the main floor of the building, with platforms, express and baggage accommodation at the lower level. The design is New England, Colonial style; red brick, with limestone trimmings and green slate roof. The main floor, at street level, with entrance from Colburn St., is to contain a main waiting room, 35 x 55 ft., women's waiting room and lavatory, men's lavatory, and a third and telephone office. The building, located over the tracks at the southwest corner of Colburn and Water Streets, with 33 ft. frontage on Colburn St., and 76 on Water St., and tracks to pass beneath the main floor of the building, with platforms, express and baggage accommodation at the lower level. The design is New England, Colonial style; red brick, with limestone trimmings and green slate roof. The main floor, at street level, with entrance from Colburn St., is to contain a main waiting room, 35 x 55 ft., women's waiting room and lavatory, men's lavatory, and a third and telephone office. The building, located over the tracks at the southwest corner of Colburn and Water Streets, with 33 ft. frontage on Colburn St., and 76 on Water St., and tracks to pass beneath the main floor of the building, with platforms, express and baggage accommodation at the lower level. The design is New England, Colonial style; red brick, with limestone trimmings and green slate roof. The main floor, at street level, with entrance from Colburn St., is to contain a main waiting room, 35 x 55 ft., women's waiting room and lavatory, men's lavatory, and a third and telephone office. The building, located over the tracks at the southwest corner of Colburn and Water Streets, with 33 ft. frontage on Colburn St., and 76 on Water St., and tracks to pass beneath the main floor of the building, with platforms, express and baggage accommodation at the lower level. The design is New England, Colonial style; red brick, with limestone trimmings and green slate roof. The main floor, at street level, with entrance from Colburn St., is to contain a main waiting room, 35 x 55 ft., women's waiting room and lavatory, men's lavatory, and a third and telephone office. The building, located over the tracks at the southwest corner of Colburn and Water Streets, with 33 ft. frontage on Colburn St., and 76 on Water St., and tracks to pass beneath the main floor of the building, with platforms, express and baggage accommodation at the lower level. The design is New England, Colonial style; red brick, with limestone trimmings and green slate roof. The main floor, at street level, with entrance from Colburn St., is to contain a main waiting room, 35 x 55 ft., women's waiting room and lavatory, men's lavatory, and a third and telephone office. The building, located over the tracks at the southwest corner of Colburn and Water Streets, with 33 ft. frontage on Colburn St., and 76 on Water St., and tracks to pass beneath the main floor of the building, with platforms, express and baggage accommodation at the lower level. The design is New England, Colonial style; red brick, with limestone trimmings and green slate roof. The main floor, at street level, with entrance from Colburn St., is to contain a main waiting room, 35 x 55 ft., women's waiting room and lavatory, men's lavatory, and a third and telephone office. The building, located over the tracks at the southwest corner of Colburn and Water Streets, with 33 ft. frontage on Colburn St., and 76 on Water St., and tracks to pass beneath the main floor of the building, with platforms, express and baggage accommodation at the lower level. The design is New England, Colonial style; red brick, with limestone trimmings and green slate roof. The main floor, at street level, with entrance from Colburn St., is to contain a main waiting room, 35 x 55 ft., women's waiting room and lavatory, men's lavatory, and a third and telephone office. The building, located over the tracks at the southwest corner of Colburn and Water Streets, with 33 ft. frontage on Colburn St., and 76 on Water St., and tracks to pass beneath the main floor of the building, with platforms, express and baggage accommodation at the lower level. The design is New England, Colonial style; red brick, with limestone trimmings and green slate roof. The main floor, at street level, with entrance from Colburn St., is to contain a main waiting room, 35 x 55 ft., women's waiting room and lavatory, men's lavatory, and a third and telephone office. The building, located over the tracks at the southwest corner of Colburn and Water Streets, with 33 ft. frontage on Colburn St., and 76 on Water St., and tracks to pass beneath the main floor of the building, with platforms, express and baggage accommodation at the lower level. The design is New England, Colonial style; red brick, with limestone trimmings and green slate roof. The main floor, at street level, with entrance from Colburn St., is to contain a main waiting room, 35 x 55 ft., women's waiting room and lavatory, men's lavatory, and a third and telephone office. The building, located over the tracks at the southwest corner of Colburn and Water Streets, with 33 ft. frontage on Colburn St., and 76 on Water St., and tracks to pass beneath the main floor of the building, with platforms, express and baggage accommodation at the lower level. The design is New England, Colonial style; red brick, with limestone trimmings and green slate roof. The main floor, at street level, with entrance from Colburn St., is to contain a main waiting room, 35 x 55 ft., women's waiting room and lavatory, men's lavatory, and a third and telephone office. The building, located over the tracks at the southwest corner of Colburn and Water Streets, with 33 ft. frontage on Colburn St., and 76 on Water St., and tracks to pass beneath the main floor of the building, with platforms, express and baggage accommodation at the lower level. The design is New England, Colonial style; red brick, with limestone trimmings and green slate roof. The main floor, at street level, with entrance from Colburn St., is to contain a main waiting room, 35 x 55 ft., women's waiting room and lavatory, men's lavatory, and a third and telephone office. The building, located over the tracks at the southwest corner of Colburn and Water Streets, with 33 ft. frontage on Colburn St., and 76 on Water St., and tracks to pass beneath the main floor of the building, with platforms, express and baggage accommodation at the lower level. The design is New England, Colonial style; red brick, with limestone trimmings and green slate roof. The main floor, at street level, with entrance from Colburn St., is to contain a main waiting room, 35 x 55 ft., women's waiting room and lavatory, men's lavatory, and a third and telephone office. The building,