

Lesson VII. Nov. 12, 1916. World's Temperance Sunday.—Rom. 14: 13-15: 3.

Commentary.—I. Christian temperance (vs. 12-15). 13. Judge this rather than our attitude toward others... We are called upon to consider well what our attitude toward others should be...

Now what stronger, clearer faith than that in Christ alone, by which those... He held down three principles sufficient to meet any difference between them as Christians...

Best Liniment of All Destroys Every Pain But Never Burns. How thankful we are to get hold of such a wonderful household remedy as Nerviline...



SOME VETERINARY POINTERS. There are many important matters to be attended to by the shepherd in the fall, and he makes mistakes in such work...

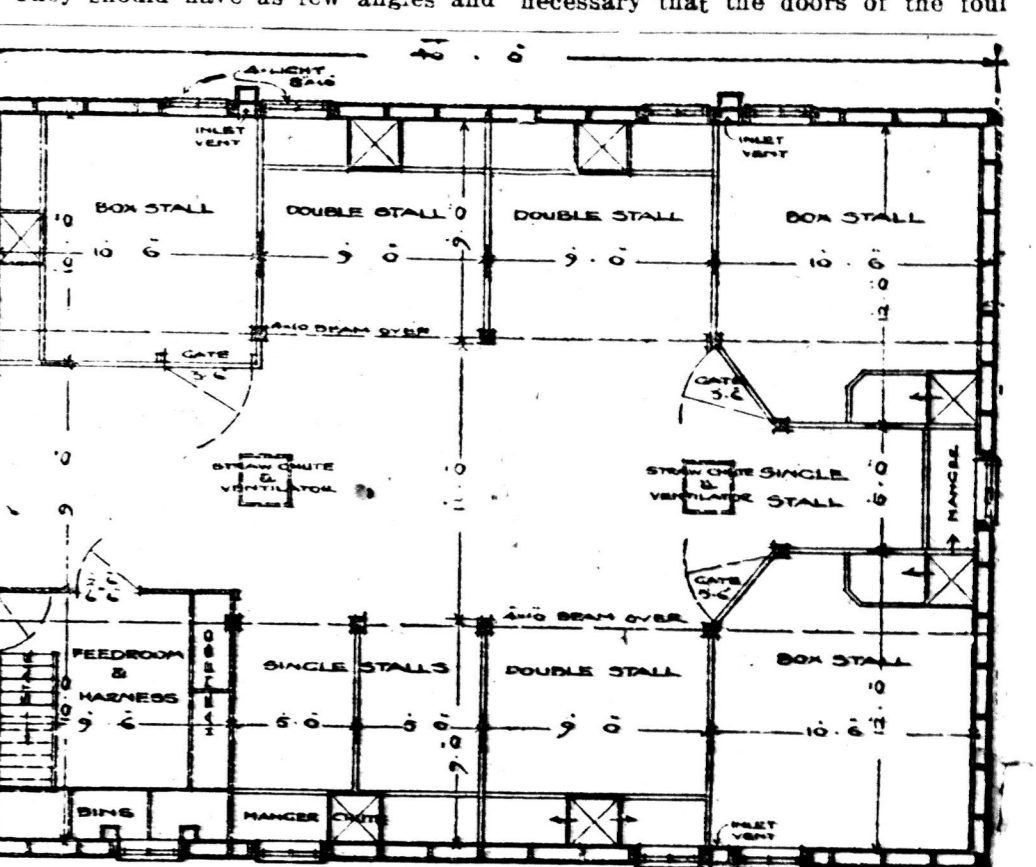
WHEN YOU ARE PLANNING A NEW BARN

Fresh Air and Abundance of Light Essentials—Beware of Dampness—Plan of Horse Stable to Accomodate Fifteen Head.

On many farms the stabling accommodation of the live stock in the winter does not receive the consideration it deserves. No one would think of keeping dairy cattle out of doors all winter...

The building in which horses are kept need not be warm—in fact, if it is too warm there is danger of their getting cold when turned out during the day...

The ventilation of the stable is well provided for. The fresh air inlets are placed at the corners of the box stalls and the outlets are made by combination foul air outlets and straw chutes...



SYSTEM OF VENTILATION. The first thing to decide upon then, when one is planning a stable is the system of ventilation. In a good system of ventilation no animal should be in a direct draft...

urns as possible, and be carried above the ridge in the form of a spout. It is better to have the side of the cupola open rather than covered with slats...

air outlets which open into the loft be kept firmly closed when they are not being used as straw chutes...

TRAPPERS! Send your RAW FURS to JOHN HALLAM

II. Imitating Christ's example. Paul wanted none to suffer bondage, nor yet did he permit their liberty in Christ to be harmful to their brethren...

DODD'S KIDNEY PILLS

and follow with half a teaspoonful each of powdered saltpeter and pockroot twice daily, in water, and increase the dose if found necessary.

not only pay for his time and labor, but interest on the capital invested. It is hardly necessary to say that to do this permanency of location is very important.

BABY'S OWN TABLETS USED TEN YEARS

Mrs. C. E. Stilwell, Winthrop, Sask., writes: "I have used Baby's Own Tablets for the past ten years and have found them so good for my little ones that I always keep a box in the house..."

MARKET REPORTS

TORONTO MARKETS.

FARMERS' MARKET.	
Dairy Products	
Local, choice butter, 1 lb.	\$0.25
Local, standard butter, 1 lb.	\$0.23
Local, cream cheese, 1 lb.	\$0.15
Local, cottage cheese, 1 lb.	\$0.12
Local, curd, 1 lb.	\$0.10
Local, milk, 1 qt.	\$0.15
Local, cream, 1 qt.	\$0.18
Local, eggs, 1 doz.	\$1.50
Local, chickens, 1 lb.	\$0.15
Local, turkeys, 1 lb.	\$0.20
Local, geese, 1 lb.	\$0.18
Local, ducks, 1 lb.	\$0.15
Local, hogs, 1 lb.	\$0.12
Local, mutton, 1 lb.	\$0.15
Local, beef, 1 lb.	\$0.15
Local, pork, 1 lb.	\$0.12
Local, lamb, 1 lb.	\$0.18
Local, veal, 1 lb.	\$0.15
Local, fish, 1 lb.	\$0.15
Local, fruit, 1 lb.	\$0.15
Local, vegetables, 1 lb.	\$0.10

Wisdom in farming to-day means that the man who tills the soil for a living must plan his career the same as any other business man would do.

IF YOUR THROAT IS HUSKY CATARRH MAY BE STARTING
A weak or irritated throat is the first step towards Catarrh. Everything depends on your remedy. A cough mixture slips quickly over the stomach and does little but harm digestion.

Bread prices are fixed by bakers, but the price of a bun is still controlled by magistrates.—W&T Street Journal.