

The BUSY STORE

WEDNESDAYS AND SATURDAYS OPEN

STORE CLOSED AT 6.30 P.M.

To Our Many Patrons
we extend
The Season's Greetings

MILLER BROS.

Phone 28

Canada Food License No. 8-12151

Standard FEEDS

Are Endorsed by the Organization of Resources, Committee of Ontario and are for Sale by the following Firms:

- The Campbell Flour Mills Co., Ltd., W. Toronto.
- The Campbell Flour Mills Co., Ltd., Peterboro.
- Howson & Howson, Wingham.
- D. C. Thomson, Orilla.
- A. A. McFall, Bolton.

Write for Prices and purchase direct from the above Manufacturers.

SEE "STANDARD" ON THE TAGS.

Offering for Sale

Oil Cake - Cotton Seed Meal

For immediate sale in carload lots. To be sold directly to Farmers, Farmers' Local Organizations and Local Dealers selling directly to Feeders of Live Stock. This offer is open only to December 31, when other disposition will be made of stocks remaining.

Prices on Application. THE December 31 they will be approximately \$64.00 per ton Hamilton, depending on carrying charges at the time of purchase.

SOLD ON THE BASIS OF MARKED WEIGHTS AS THEY ARRIVE. PURCHASE DIRECTLY FROM

James Richardson & Sons, Ltd.

ROYAL BANK BUILDING, TORONTO

In charge for the Organization of Resources, Committee of Ontario, Hamilton, Ontario.



A Merry Christmas
and a
Happy New Year
to All

E. T. CARTER.

Phone 19 - Jarvis

Go to

A. RODGERS

Repairing & New Handmade
Boots and Shoes.

A. RODGERS,

JARVIS ST.

Agent for

Consolidated Wallpaper Co.

See Our Samples

FINANCIAL ETC.

\$25,000 to assist reduced rates of interest on the savings loan on the installment principle on a greatly reduced rate.

Agents for several first class insurance companies and will take care of the life insurance. Also issues of mortgages in any amount. Several valuable farm mortgages on easy terms.

See C. E. BOURNE

DR. FRED L. WILKINSON

Physician

Room 21

100 King Street West

Consultation Hours: 10:00 a.m. to 6:00 p.m.

Phone 219

Polio in the Hay
(Experimental Farm Note)
It is a well known fact that the quality of hay is of great importance to the health of the stock. To use as good hay which is 50 per cent. coarse and unpalatable waste is not the best means of keeping stock in good condition, nor is it more wise to feed them poisonous hay. Most animals have an instinctive knowledge of injurious foods and will push aside and leave suspicious portions of their hay. But this refuse is often chopped up with the fodder in such a manner that they must eat it or starve.

Poisonous Plants in the Hay
Bracken is conspicuous in hay by its coarse foliage and rusty green colour. A closer examination will reveal on the under side of the leaves, a narrow band or margin of rusty brown. All bracken should be removed from the hay and burned. It will not do to leave it for bedding, as greedy horses will eat their bedding while waiting for their regular food. No ill effects appear after eating it once or twice, as bracken poisoning is slow and cumulative.

The leafless branches of horsetail are also readily distinguished by a difference in colour, being of a darker and more bluish shade of green than the ordinary hay. Other differences are, the yellow stems, the leafless, furrowed and jointed branches with sharply pointed teeth around the joints.

The poisoning of cattle in the west has occurred from eating the seed pods of lupines dried with the hay; loss might easily have been avoided by picking out the coarse stalks with the three parted pointed pods. The leaves of the larkspurs resemble those of the buttercups and are very toxic in a fresh green state. But with maturity they lose their intoxicity which then becomes concentrated in the seeds. Thus a very small quantity of pods and seeds will cause death.

Another noticeable plant among hay, harmful to sheep, is the lupine. The pods and seeds are the most poisonous portions of the plant and these are often cut with the hay in the western provinces. The action of the poison is not cumulative and hence animals may feed upon the plant without much harm unless the toxic limit is reached. The toxic dose for sheep of the seeds alone is from 14 to 1-2 lbs. and that of the seeds together with the pods is about 1-2 lbs. The pods are about an inch long, more or less hairy and damaged at intervals along the stem.

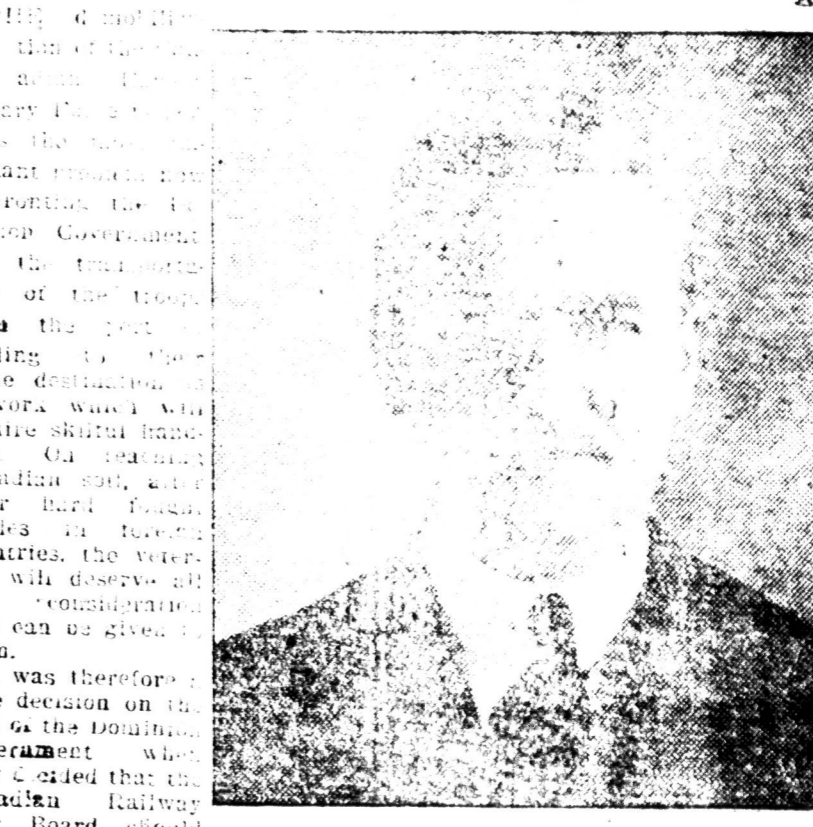
PATRIOTISM.
"Breathes there a man with soul so dead,
Who never to himself hath said,
'This is my own, my native land.'"
Thousands upon thousands of men have met untimely deaths during the past four years; never has the love of home and country called for such a sacrifice. Patriotism does not begin nor end with war. We cannot all serve on the battlefields—but we can be as truly patriotic in looking after the welfare of our countrymen here at home.

Phone No. 13 THE PLACE OF QUALITY THE Montreal House

Wishing One and All
A Merry Christmas
and a
Happy and Prosperous New Year

J. A. BURWASH
Canada Food License No. 8-8588

Demobilization of Troops



Lieutenant Colonel Walter Maughan.

The War Board has appointed a committee that will make all the arrangements necessary for the transportation of the soldiers through Canada.

The War Board so constituted the committee that it is representative of the three principal Canadian railways. The names of the representatives of the war officers of the Canadian Pacific Railway have been conspicuous as leaders in the country's patriotic efforts, and now Lieutenant Colonel Walter Maughan, Assistant General Passenger Agent of the C.P.R., has been chosen as chairman of the committee that is to have the responsibility for the train transportation of the soldiers to their places of abode in Canada. Lieutenant Colonel Maughan's long experience and his thorough knowledge of railroad affairs make him thoroughly qualified to fill the position for which he has been selected.

Volume X

Jarvis F & ROLL

We

Oilcake du
November
off car. F
er now as
500 Bags,
get Cottor

Canada F

A. L. JARVIS

NORTH

We Ha

All

Fruits at B

Try our

Del

Door.

London

For

Store.

Canada F

Licen

HENRY

Xr

GO

See

of Jewels

Watches,

ware, Ebs

Sets.

Xmas

Toys,

Books, E

holders,

PRIC

MRS. J

JAR

Prepare

Blu

Thorough in-
backkeeping,
and, Penman-
RATES: One
Six
Students adult
throughout the
J. H. B.

Renew
through
can sav