

# The BUSY STORE

WEDNESDAYS AND SATURDAYS OPEN

STORE CLOSING AT 6.30 P. M.

## Spring Millinery

We cordially invite the ladies of Jarvis and vicinity to our display of Millinery and Millinery Novelties.

## Car of Sugar

Has arrived and present price will only last until March 20.

## MILLER BROS.

Phone 28

Canada Food License No. 8-12151

## Hams AND BACON

## The Very Best

Cash Prices Paid for Eggs

## THOS. HARRIS

Canada Food Board License No. 9-1836

Jarvis - Ontario

## Alex. G. Glass,

EXPERT

Piano and Organ Tuner & Repairer. 113 Tisdal St. Hamilton, Ontario.

Leave all orders at The Record at Jarvis Ont. Phone 31.

## CASH Hardware.

## Seasonable GOODS

Give your Horse a Spring Haircut

Hand Clipper \$2.00 to \$2.50 ea.

Ball bearing power clipper \$12.00 ea.

Horse Brushes & Combs

Buckeye Incubators and Brooders

Everyone Guaranteed 24.75

What About your Sap Pails in 25 lots 25c ea. SAP SPOUTS 2 to 5c ea.

Royal Purple Stock, Poultry, Cough, Worm, Roup Specific.

## E. T CARTER.

Phone 19 Jarvis

## Bees Diseases

(Experimental Farms Note.) There are three brood diseases that are of importance to the beekeeper, and two of them are responsible for very heavy losses every year. **Jelly-rot** is an infectious disease but transient in character. It may be serious enough at times to weaken a colony considerably, but seldom destroys it completely. It appears in the spring, mostly during the spring and early part of the summer, but cases may be found at any time during the season. The symptoms are irregular brood and punctured cappings: the affected larvae are usually dark grey to almost black in colour and are found lying stretched out on the lower wall of the cell with the head turned up pointing to the upper wall of the cell at the entrance. The body wall of the diseased larvae becomes toughened while the contents of the body are somewhat watery and granular; the whole can be lifted from the cell intact. There is no definite treatment for this disease, but the beekeeper who keeps his colonies at the maximum strength and uses only young vigorous queens need not fear it. **European foul-brood** is a highly infectious disease and spreads very rapidly through an apiary, causing very heavy losses especially among black bees and hybrids. The larvae usually die before capped over, while still curled in the cell. The colour of the affected larva changes from a glistening white to a light yellowish or greyish tint, later turning darker and the larva settles to the base of the cell in a shapeless mass, finally drying to a dark detachable scale, which is removed by the bees. This disease may appear at any time during the season, but is mostly prevalent during the spring and early spring and summer. European foul-brood is essentially a "wax colony" disease and the beekeeper who uses only young vigorous Italian queens and keeps his colonies strong need not fear it. **American foul-brood** does not spread through an apiary as quickly as does European foul-brood but it is harder to combat. The larvae usually die after being capped over and the first sign the bee-

keeper usually has of the presence is a number of dark, sunken cappings scattered about among the healthy brood. Sometimes these cappings may be perforated. If the capping is removed, a dark chocolate-colored mass will be found lying on the lower side of the cell. If a wooden toothpick or something similar is inserted into the diseased larva and given one or two turns and then withdrawn, the mass will be found to "rope out" to one or more inches before breaking. This is the chief characteristic of this disease. The only treatment advocated for American foul-brood is to shake the bees on to starters in a clean hive and three days later to remove the starters and give full sheets of foundation. The old hives should be disinfected, the combs rendered to wax for foundation and the frames destroyed. The honey is safe for human consumption but must not be placed where bees have access to it. This treatment should be given during a honey flow, if not the bees will need feeding. Further details of these diseases and their treatment will be found in Bulletin No. 26, Second Series, which can be obtained free by applying to the General Experimental Farm, Ottawa.

## THE Three Prime Virtues

-IN A PHOTOGRAPH- Artistic Quality, Permanency, and Likeness

-OURS HAVE ALL THREE-

## MOORE'S STUDIO

MAKERS OF QUALITY PHOTOGRAPHS PHONE 183 Norfolk St. Simcoe.

Go to A. RODGERS -FOR- Repairing & New Handmade Boots and Shoes.

A. RODGERS, JARVIS, ONT. Agent for Consumers Wallpaper Co. See Our Samples.

Shop in Simcoe At OUR Expense

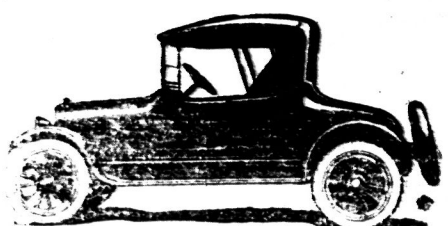
We Refund Car Fare from Jarvis on a purchase of \$6.00 and over, Hagersville \$9.00 and over, and from Nelles Corners on \$10.00 and over.

Thurdoch's Simcoe's Favorite Shopping Place

## JARVIS REPAIR and SUPPLY GARAGE

WE REPAIR All makes of Motors, Cars, Gas or Gasoline Engines, Tire Pumps, Lights, Bicycles, Etc.

## Reo Car a speciality



We Handle—Tires and a large Trade Stock SATISFACTION GUARANTEED E. W. ANDERSON, Proprietor

keeper usually has of the presence is a number of dark, sunken cappings scattered about among the healthy brood. Sometimes these cappings may be perforated. If the capping is removed, a dark chocolate-colored mass will be found lying on the lower side of the cell. If a wooden toothpick or something similar is inserted into the diseased larva and given one or two turns and then withdrawn, the mass will be found to "rope out" to one or more inches before breaking. This is the chief characteristic of this disease. The only treatment advocated for American foul-brood is to shake the bees on to starters in a clean hive and three days later to remove the starters and give full sheets of foundation. The old hives should be disinfected, the combs rendered to wax for foundation and the frames destroyed. The honey is safe for human consumption but must not be placed where bees have access to it. This treatment should be given during a honey flow, if not the bees will need feeding. Further details of these diseases and their treatment will be found in Bulletin No. 26, Second Series, which can be obtained free by applying to the General Experimental Farm, Ottawa.

## Quality in our Field Crops

(Experimental Farms Note.)

The attainment of quality is the "worth while" of farming. Live Stock, the best of their breed, well fed and thrifty; fruit, large of size, rich in colour and flavour; crops, vigorous, free from weeds, productive and pure of variety, these things represent "quality", and its attainment should be the goal of our farming ambitions.

As applied to field crops, it has to be considered in two ways, first the quality of the standing crop, second, the quality of the standing crop, second, the quality of the threshed grain. The quality of the crop in the field is determined by the state of tillage and fertility that the seed bed is in at the time of sowing, and by the care given to the selection and cleaning of the seed previous to sowing. Quality in the threshed grain is determined largely by the same factors. Vigorous plants are essential for the production of large, plump grain, and these can only be produced in a well tilled fertile, fertile seed bed and by a vigorous variety which is the product of careful breeding and selection. The purity and uniformity of a variety of a variety can be maintained only by consistent selection through the medium of the seed plot and the threshing mill.

To produce quality in our crops attention must be given to all the factors enumerated, while the neglect of any will result in a crop inferior in appearance, yield and reproductive power.

Barring weather injury, quality and yield go together. Large yields per acre generally go hand in hand with grain of beautiful appearance and uniform excellence, and vice versa. The farmer thus receives generous remuneration for his labour, but what is more important, in striving for quality he will find his greatest reward not only in increased yields and larger profits, but in the satisfaction that attends the application of intelligent and concentrated effort.

## Renton

Our Spring band "The Frogs" had a sudden close up last week. We hope the weather man will soon moderate things so we can enjoy their fine music.

Wood bees and attending farm sales is the order of the day.

Mrs. H. Newell and son Orvil spent Sunday last with Mr. and Mrs. D. Secord at Prospect Farm, Scotch Line.

Mr. and Mrs. G. Wilson from the Blue Line have moved into the W. E. Partridge farm last week.

Mr. and Mrs. John Rountree of Nelles Corners spent a couple of days last week at Prospect Farm.

Mr. W. H. Roberts and family spent Sunday afternoon with friends at Waterford.

Some have commenced spring seeding and plowing around our barn but this cold spell put a stop to that kind of work.

Mr. and Mrs. J. W. Kniffen and children spent Sunday near Round Plains with Mr. and Mrs. Veit.

## Sandusk

Mrs. Bassindale left on Wednesday for Chesapeake after spending the winter with her daughter, Mrs. Thos. Westerby.

Phone No. 13 THE PLACE OF QUALITY THE Montreal House

## Have A Large Range

New Curtain Material

for your Inspection.

We Sell

"NIAGARA MAID" Silk Gloves

Are You Looking for a Bargain?

Cashmere Hose, regular \$1.75, 1.50 and 1.25 per pair for \$1.00 pair.

## Novelties

Hair Nets, Face Veils, Side and Back Combs, Barrettes in plain and ribbon, Bone Hair Pins

## Groceries

Holbrooks Custard Powder, 2 for 25c

Jello Powder, 2 for 25c.

Prunes, medium size, 2 lb. for 35c

Corn Syrup, 5 lb. pail, 55c

Granulated Sugar, 20 lb. sack \$2.35

Currants 32c lb.

Seeded and Seedless Faisins at 18c a package.

## J. A. BURWASH

Canada Food License No. 8-8588

**Dominion Seeds LIMITED**

1919

**FREE**

For all gardeners—a combined textbook and catalogue. It tells you everything—Study it before you commence your season's work.

**FREE**

For all poultry keepers and stock raisers, a book that tells you what to do, what to use, and where to get it. Write for it. Hang it in a handy place—Of infinite value as a ready reference.

**Dominion Seeds, Limited**

LONDON, CANADA

**FREE**

**Dominion Seeds**

**GARDEN BOOK**

## BANK OF HAMILTON

What may happen when peace is established is uncertain, but the man or woman with a Savings Bank Account has no occasion to worry. Save now while the earnings are high. Open a savings account with the Bank of Hamilton.

JARVIS BRANCH John Brown, Manager

Mrs. J. R. Pond is on the sick list. We hope for a speedy recovery. Mr. and Mrs. J. Blackman, "Selkirk," was visiting in this vicinity on Sunday. Mr. and Mrs. J. W. Westerby spent Sunday with friends in Selkirk. The April meeting of the Sandusk Women's Institute will meet at the home of Mrs. Chas. Nichol on Thursday, April 3.

Mr. and Mrs. Wm. N. Swent of Rainham Centre visited on Sunday at Chestnut Knolls.

C. Rodgers is agent for the Oliver Typewriter. See him before placing your order.

## Volume XL

Jarvis EL & ROLLE

Our Br Flour

White Aster itoba, Smith ed, Sunshine Special Price or over.

WE HAV Oat Roll e can roll y horse feed notice.

Canada Food

A. L. JARVIS

## "NORTH-EN

We Han

All lin Fruits at Best

Try our G Deliver Door.

London B For S Store.

Canada Food License N

HENRY J

Shop in At OUR E

We Refund Car Fare purchase of \$6.00 and over, Hagersville \$9.00 and over, and from Nelles Corners on \$10.00 and over.

Thurdoch's

Simcoe's Favorite

DR. FRED L. W Dent

ROOM 31

CORNER JAMES

Phone 1126

NOTICE TO E

IN THE MATTER

William Thomas, Pet

Township of Walpole,

Haldimand, Farmer,

NOTICE is hereby g

R. S. O. 1911, Chapte

that all creditors, a

claims against the

William Thomas Pet

or about the twenty f

ary, A. D. 1919, are to

before the fifth day o

1919, to send by post,

to Harriet Mary, Pet

Township of Walpo

County of Haldimand,

istratrix of the estate

their claims, the stat

counts and the natu

if any, hold by them.

AND FURTHER T

after such last mentio

Administratrix will p

bute the assets of the

the parties entitled th

gard only to the clai

shall then have not

said Administratrix v

for the said assets or

any person or persons

notice shall not have

her at the time of such

Dated this eighth da

1919.

(MRS.) HARRIET MARY

R.R. No. 1, Jarv

FRANK REID, Simcoe,