

15 New Models OF McLaughlin Cars

Our Stock is very complete. The new prices are very attractive as substantial reductions have been made.

The 'Durant' Sedan

This line is the best value on the market to-day. The 'Durant' is a leader.

Tires--Accessories

Complete stock of Accessories carried in stock in our new and up-to-date Garage. All makes of cars repaired and overhauled. All work guaranteed.

Todd Bros. Hagersville
Ontario

SAVE MONEY !!

Bargains in

WALL PAPERS

Summer Sale Now On

at

AUSTIN'S

26 Norfolk Street, SIMCOE

Jarvis Shoe Parlors

LADIES' SHOES FOR FALL

Oxfords at \$4.25 and \$4.50.

Strap Slippers at \$3.85 and \$4.50

Black Kid Shoes at \$6 and \$6.50

SCHOOL SHOES

GENUINE SOLID LEATHER

Misses' Tan Calf and Gun Meda' Shoes, sizes 11 to 2 at \$3.90

Youth's School Shoes at \$2.95

Boys' Shoes at \$3.25

SEE OUR BARGAIN COUNTER

We are clearing out odd lines it will pay you

Harness **A. H. LANGRAF** Shoes

BUY YOUR
Printing
At the Record Office

ESTABLISHED 1872

SALE NOTES

Leave your sale notes with us for collection, or if you wish to obtain advances against them, consult any of our Local Managers.

BANK OF HAMILTON
JARVIS BRANCH—J. H. Brown, Manager
Nanticoke—Tuesday and Friday

HUNTERS FLOCK TO BRITISH COLUMBIA



Byron Harmon of Seattle, Alta. brings down his goat after a long chase and stiff climb



Seventy-Six Year old hunter and Indian Guide hunting in Cassiar District in B.C.

BRITISH Columbia offers the best still remaining, easily accessible big game hunting territory on the continent. It is not necessary to go far afield from the railway and some of the best hunting grounds are as follows: Beginning at the east, there is the East Kootenay district, reached from Invermere. Two ranges may be hunted here; in the Rockies on the east are to be found moose, mule and whitetail deer, mountain goat, mountain sheep, grizzly, cinnamon and black bear, while among the Selkirk, on the west, are caribou, mule and whitetail deer, mountain goat, grizzly, cinnamon and black bear. Very satisfactory wild fowl shooting may be enjoyed on the lakes and flats in the late fall.

Deer, grizzly and black bear, caribou and goat are found in the country around Chase. Deer are found from 4 miles of the town; bear from 20 miles; caribou beyond the 30 mile mark, and goat from 30 miles. Excellent game bird shooting is to be had here, including ducks, geese, pinnated and ruffed grouse, with some snipe and plover at various points.

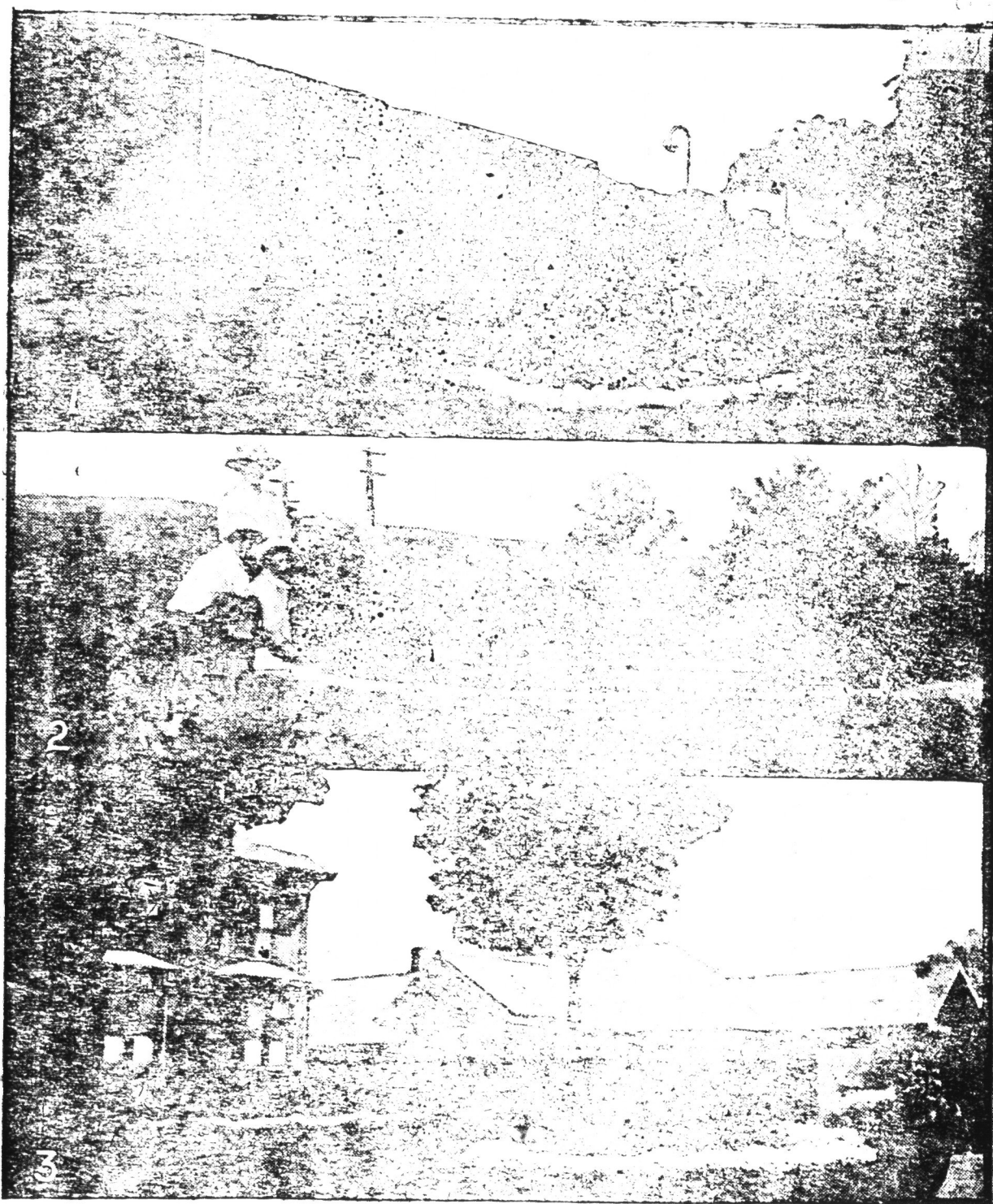
Rocky Mountain Goat. He looks lazy, but oh, how he can travel!

Kamloops is the gateway to a rich sporting region where goats, brown, cinnamon, black and grizzly bear, small deer, moose and occasional caribou and sheep (3 varieties) are to be found. From here expeditions to the Fort Fraser country may be arranged—including about 176 miles of canoeing—where deer, bear and other large game may be shot.

A hunting area rapidly growing in favor is the Caribou District, reached from Ashcroft. It is off the beaten path, therefore big game is plentiful, and includes grizzly, black and brown bear, moose, caribou, goat and sheep. Fishing for gamey trout is another attraction of this region.

Of course the Cassiar District to the north stands in a class by itself, for the cost of a hunting trip there prohibits a great influx of hunters, insuring good bags for those who hunt there. Thirteen hunters taken in by Frank Callbreath, the outfitter at Telegraph Creek, in 1921, shot 11 moose, 22 caribou, 21 goat, 22 sheep and 20 bear, ten of which were grizzlies.

Beautifying the Railways



- (1) The Station Garden at Milton, Ont.
- (2) The Fountain in the Station Garden at McAdam, N.B.
- (3) The Station and Office at Woodstock, N.B.

At the present time of the year when the snow covers the ground one decidedly misses the station and section gardens along the Canadian Pacific Railway with their profusion of shrubbery and flowers. It is the policy of the Canadian Pacific Railway to establish permanent gardens, and the C.P.R. Permanent Garden Committee gives every possible assistance in carrying on this work; thus every year sees an increase in the number of permanent gardens laid out.

In carrying out this work a great number of trees, shrubs and perennial plants are used annually. Suitable trees such as ash, elm, maple and poplars are supplied and shrubbery such as honeysuckle, lilac, barberry, spirea, elder, weigela, etc., together with perennial plants such as peonies, delphinium, galliardia, coreopsis, sweet william, phlox, pink and others are supplied. Vines are also supplied to cover out-buildings and fences. For this purpose Virginia creepers, hops and Japanese ivy are considered the best.

The first display of color in spring-time is obtained from the planting of tulip bulbs in the fall,

but owing to their short life and labor involved, the distribution is limited to large stations and terminals. Following this, standard annual seed packages are supplied on request to all those interested. The varieties are specially selected for their hardiness and with consideration to the display they will give. These classes are nasturtiums, marigolds, zinnias, geraniums, geraniums, cosmos, zinnia, asters, verbena, penstemon, alyssum and lobelia, the latter two varieties being mainly used for borders.

Gradually, however, this class of plants is being replaced by perennial stock which requires less manual work and comes up from year to year living through the severest winters. In the Lake Superior country pansies alone are used. This plant is a very hardy perennial and has been found to thrive well in that

part of the country. It is pleasing to remember that this work is to be directly credited to the agents and other employees, for it is carried out mostly in their own time and through enthusiasm in beautifying their own living quarters. The C.P.R. recognizes their effort by presenting prizes on each division according to merit. These are keenly contested for, and in the distribution due consideration is taken of individual effort and the results achieved therefrom.

One important measure is to improve conditions around bus-stations and points where employees gather and accordingly make their surroundings pleasant and attractive. Under the guidance of a Committee which includes fully qualified foresters and horticulturists, plans are carefully laid and the work carried out under their direction. This Committee is constantly in touch with other horticultural experts, including agricultural colleges and horticultural societies so that no stone is left unturned to keep the work up to a modern standard.

Recent Ships From Overseas Have Brought Wonderful New Things For Falls' Store, Simcoe

Butterick Pattern Department

Now located in a quite Section near the Book Department. The Butterick Quarterly now sells for 25c instead of 35c.

Men's Collars--2 for 25c

Cluett & Peabody's best, all desirable shapes. They are in the quarter sizes only at this price. 14 1/2 to 15 3/4.

The Fancy Goods Department

Offers new Cushions and Great Stocks of wool. Round and oval shapes, cushions in Chintz and Satin many designs and shades to chose from, specially priced at each \$1.00 to \$3.75, many are buying them for "Their Cars."

"There's a great Wool Department here, a list of different kinds follows:

- | | |
|----------------|--------------------|
| Silk Ray | Heather Knitting |
| Silk turt | Superior Fingering |
| Radio | Knitting Worsted |
| Shetland Floss | Sweater yarn |
| Silkalo | Sylfeake |
| | Silver Gleam |

There's Nothing Like The Pie Mother Made

But you didn't realize it until you ate the other kinds, and you can't realize what Falls' special Furniture Values mean until you've compared our prices with the prices asked by other good Stores of Furniture of similar quality. Newly unpacked and displayed this week for the first time on our large Furniture Floor, very interesting things in—

- | | |
|---|---------------------|
| Chesterfield Suites | Cedar Chests |
| Dining Room Suites | Library Tables |
| Bedroom Suites | Simmons Beds |
| Floor Lamps | Marshall Mattresses |
| Reading Lamps | Davenport |
| Reed Chairs | Hoover Sweepers |
| Baby Carriages | Kitchen Cabinets |
| Sectional Bookcase and Upholstered Chairs | |

A Trip to Falls' Downstairs Store Will Be Found Most Interesting--Always Busy

Games for boys and girls in large assortment 40c to \$1.00

"Gig saw Puzzles each 15c to 50c

"Wear-ever" always wears, large showing, all specially priced

Low Prices on Soaps

Real Good Laundry Soaps, 5 Cakes for 25c

Special, 6 cakes for 39c

Lux 2 for 21c

Pearline 3 for 24c

On The Tables

- | | |
|------------------|----------------------|
| Baby Wash Boards | Key Rings and Chains |
| Apple Covers | Paring Knives |
| Nut Crackers | Nail Brushes |
| Mendits | Skirt Hangers |
| Tacks | Salad Servers |

Prices Leave Off About Where They Used to Start, at Least In Falls' Clothing Store They Do

And suit for suit the Clothing is better now, Better Fabrics, Better Models, Better Tailoring. All of which means better Values, Especially Fall's Clothing. Suits, \$35, \$30, \$25, \$20, \$15. Over Coats, \$15 to \$75.

Two Special Sales of Imported Motor Rugs and Reed Chairs

Many are buying them and putting them aside for Christmas. Prices are an actual saving of one third (1-3). The Chairs are in Fumed, Ivory, Grey and Natural. All are nicely upholstered in Chintz and Cushions made with spring seats. The Rugs are very Beautiful in Pattern and Quality, being made from fine Australian wool. See them in the show windows Friday and Saturday with the special price ticket on them.

Victory Canary Songsters

Another conignment ready for selling Saturday. They sing like a bird, Specially priced each, 25c

Bulb Bowls Each 95c to \$100

Made from Blue and Green Pottery. Each Bowl holds four to six Narcissis bulbs "We do not handle Bulbs," procure them from one of the several dealers in town, place them in one of these pretty bowls with a few Pebbles and some water, and see them grow. Parties confined to the house will find it a joy to watch the flowers come.



Is "The Record" Your Paper? It Should be in Every Home