



### You Know Our Policy

We would not recommend anything to you that is not a big value for every dollar.

That is why we advise you to put up PEERLESS FENCE.

The best fence value we know of and our personal opinion is that it is the only fence it pays to buy.

From an eight foot fence, lawn and park fence, poultry, sheep and hog fences, wire specialties, all kinds of fence tools and accessories.

Ask for Complete Catalogue.

**Percy Buck**  
R. R. No. 3 Port Dover

**THOMPSON & IONSON**  
Formerly Porter & Workhop  
Main Street Jarvis, Ont.

Also prepared to make Long Ladders, Hook Ladders and Step Ladders, Also Doubletrestles, Singletrestles and Non-Lockers, Farm Tractors, Harrows and Wagon Boxes. All kinds of old furniture repaired and varnished. **PRICES RIGHT**

**DR. LILIAN SHERWIN**  
**CHIROPRACTOR**  
in Jarvis, Tues. and Fri.

AT THE AMERICAN HOTEL.  
8 a.m. to 10:30 a.m.  
SPECIAL: \$ adjustment for 25.  
(Disassociated with Dr. Lily Jackson)

## SAVE MONEY !!

Bargains in

## WALL PAPERS

Summer Sale Now On

at

## AUSTIN'S

26 Norfolk Street, SIMCOE

### BUY YOUR

## Printing

At the Record Office

## Jarvis Shoe Parlors

### LADIES' SHOES FOR FALL

Oxfords at \$4.25 and \$4.50.

Strip Slippers at \$3.85 and \$4.50

Black Kid Shoes at \$6 and \$6.50

### SCHOOL SHOES

Genuine Solid Leather

Misses' Tan Calf and Gun Medal Shoes, sizes 11 to 2 at \$3.90

Youth's School Shoes at \$2.95

Boys' Shoes at \$3.25

### SEE OUR BARGAIN COUNTER

We are clearing out odd lines it will pay you

**Harness A. H. LANGRAF Shoes**

## W. A. Owen

We are in a position to handle.

Tinsmithing, Plumbing, Steam and Hot Water Fittings, Eave troughing, Gas Fittings, etc.

### We Handle

Cistern Pumps, Sinks, Gas Fittings, etc.

Your repair needs will receive our prompt attention

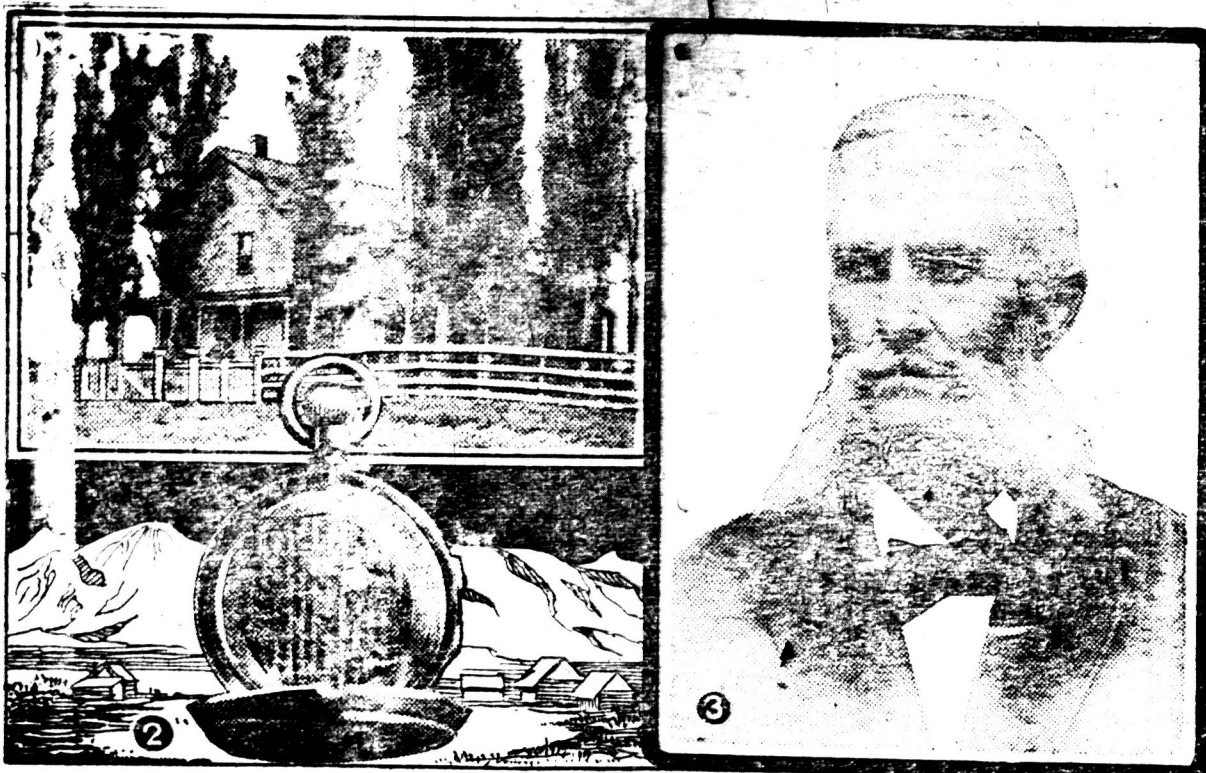
OUR WORK IS GUARANTEED

**R. A. McCarter Bloch**  
**JARVIS, ONT.**

**E. W. Anderson**  
On the Corner, JARVIS

\*\*\*\*\*

## MAJOR ROGERS AND HIS TIME



(1) Major Rogers lived in this house in Waterville, Minnesota. He also died here.

(2) Watch presented to Major Rogers, of Rogers Pass fame, about 1885.

(3) Major A. B. Rogers, who discovered the Rogers Pass, the first feasible route through the Rockies to the Pacific Coast.

ONE of the most difficult tasks in the construction of the Canadian Pacific Railway was to discover a way through the Rocky Mountains. A number of explorers had made attempts to find a way, but it remained for Major A. B. Rogers to discover the most feasible route, the route that was chosen, and is now known as Rogers Pass.

Major Rogers was a true type of railway pathfinder. The reputation he had made in the United States as a mining engineer and his advanced position on railway construction attracted the attention of the Canadian Pacific Railway officials, who enlisted him to take charge of the mountain section from Savona's Ferry in B.C. to Moose Jaw. He saw at once the problem that confronted him in finding a straight line through the Selkirk Mountains. It was suggested to follow the great bend northward of the Columbia River, a distance of over two hundred miles. He found the way by following the South Fork of the Kootenai River to the present site of the Glacier House, where he climbed a mountain and gazed upon the summit of the pass that now bears his name. Major Rogers seems to have been a man of few words. His reports contain little beyond the technicalities of his undertakings, otherwise a description of the magnificent spectacle displayed by the Rogers Pass and its surrounding scenery for the first time by a white man.

would be well worth the reading.

This was in 1881. The following year the exploration was completed by ascending the Beaver River Valley to Bear Creek, a tributary stream, then up that stream through the rugged divide between Mts. MacDonald and Tupper to the summit of the pass, and over the route to the Hells Canyon Valley. The surveys of the main line between Calgary at the Eastern base of the foothills of the Rockies, to which point they had been carried from the East, and the summit of the main range were completed in 1883. Three years later daily trains were passing to and fro between Montreal and Port Moody, a feat that the Pacific company of the railway and its staff passed for thirty-one years over this section, and with the opening of the Canadian Tunnel under Mount Massif, it was no longer needed.

It was on November 7th, 1885, that the last spike in the construction of the Canadian Pacific Railway across Canada was driven at Craigellachie, British Columbia. This opened up a new era for Canada. In recognition of the valuable work done by Major Rogers, the directors of the Canadian Pacific presented him with a cheque for \$2,000 and a watch three months later. Presented to Maj. A. B. Rogers by the Directors of the Canadian Pacific Railway Company as a token of their indebtedness to him for the discovery of a pass for the railway.

through the Selkirk Mountains, and of their appreciation of his services as Engineer-in-Chief of the location of the Mountain section of the railway.

Evidently Major Rogers was of a more practical than financial temperament, for he carried the cheque in his pocket for several years, and he only cashed it when his friends of the Canadian Pacific insisted that he should do so.

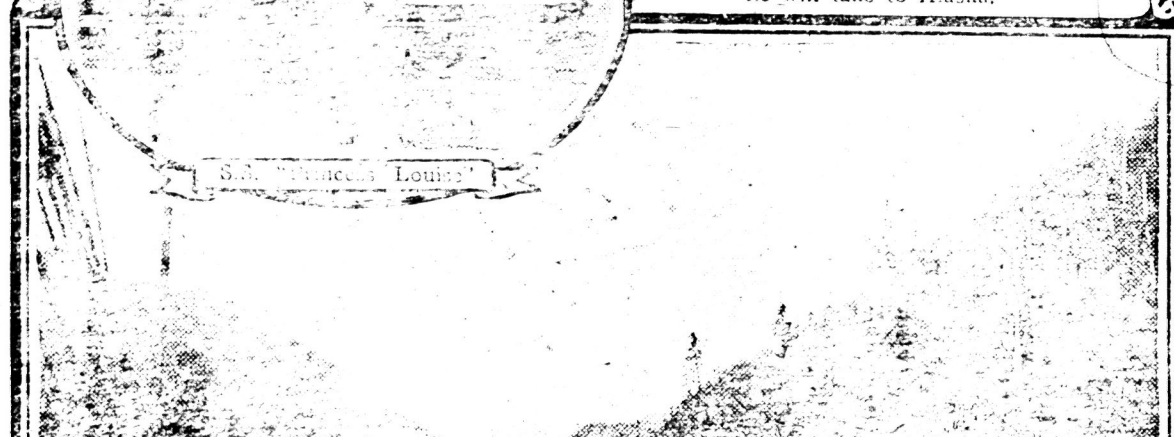
At the time of his death in 1889, Major Rogers left his estate to his brother, L. Z. Rogers, of Waterville, Minnesota, who in turn left it to his only grandson, George Rogers Clifton. Young Clifton was killed in France on October 2nd, 1918. The watch is now in a safe deposit box at a Waterville bank. There are, at present, two nephews of Major Rogers living, both of whom accompanied him in all his explorations in the mountains, and were with him when he discovered Rogers Pass. They are Mr. Albert L. Rogers and Mr. John G. Rogers, 1104 5th Avenue, Seattle, Wash.

The names of Major Rogers, and particularly Mr. C. A. Gray, have been a great deal of interest in the history of the pass, and are a possession of a great many of the original letters, newspaper clippings, and other papers from both Sir William Van Horne and Lord Shalmsbury.

## A BOYS' PILGRIMAGE TO ALASKA



George E. Buchanan and the fifty boys he will take to Alaska.



Between Vancouver and Shagway the Canadian Pacific Railway passes through hundreds of miles of such beautiful sheltered waterways as this.

GEORGE E. BUCHANAN, a Clatham, Ont. boy, is now a prosperous school teacher in Detroit, and his success largely due to the fact that he made him when he was a boy that he would leave a trip to Europe, and said to a friend, "I will go to Europe, and make a tour of the world, and when I come back I will be a rich man." He was a real incentive for success, and when the trip was made it proved an educational value that has stood him in good stead all his life. Last year Mr. Buchanan made a trip to Alaska, and the idea occurred to him of making the same kind of offer to other boys that he had himself enjoyed in his own youth. But the trip should be to Alaska and not to Europe. As soon as he made the announcement, he was surrounded by a great number of boys, and a large number of them have already been included in the trip.

The Rev. Lynn Harold Hough, pastor of the Central Methodist Church, William Livingstone, pastor of the United Methodist Church, and the Rev. John A. Hough, pastor of the Central Methodist Church, have been instrumental in the trip. The trip is a wonderful one, and the boys will have a great time. The trip is a wonderful one, and the boys will have a great time. The trip is a wonderful one, and the boys will have a great time.



The wonderful totem poles of an Alaskan Indian village.

self his own boyhood because of its educational and broadening influence. The Rev. Lynn Harold Hough, pastor of the Central Methodist Church, William Livingstone, pastor of the United Methodist Church, and the Rev. John A. Hough, pastor of the Central Methodist Church, have been instrumental in the trip. The trip is a wonderful one, and the boys will have a great time. The trip is a wonderful one, and the boys will have a great time.

Prominent Just Now is the turn of the Season---The Store is about to swing into Spring. Snow on the ground? No matter, the Store functions by the calendar rather than by the weather, so

# NEW SPRING Dresses Coats Suits with Spring Ideas

### Women's Dresses, \$16.50

Canton Crepes, Poiret Twills, Satin and Tricotines. Smart styles for present wear. Dresses you will like to finish out the Winter and for the early Spring. \$16.50.

### Women's Dresses, \$20.00

Many two-toned combinations, some strictly tailored with self or braid trimming. In serges, canton crepes, taffeta and tricotines. Sizes 15 to 44. A dress you would love to own.

### Women's Dresses, \$25.00

Pretty Frocks obtainable at a small price. Some with pleated panels and effective lace combinations. Made in flat crepe, alltime crepe, tricotine and taffeta. All new shades and sizes.

### Women's Dresses, \$29.00

The smartest effects and the newest colors on this rack, composed of alltime crepe, canton crepe, tricotine, Poiret twill, taffeta and satin. Sizes 16 to 44.

### New Spring Coats, \$15.50

The Goldale Sport Coats, a mannishly tailored garment in soft warm materials. Cleverly tailored in every detail, with neat snug-fitting shoulders and a general air of smartness. Sizes 14 to 20, only \$15.50.

### Women's Dress and Street Coats

Garments that every woman needs for general service and the styles are exceptionally becoming to all figures. Colors reindeer, brown, tan, black and navy. Prices \$18.50 to \$37.50.

### Women's Dresses, \$30.00 to \$47.50

Latest styles, beautifully made of fine taffeta, canton crepe, flat crepe, satin, alltime crepe, Kanton Knit, Paisley and other Spring silks. These are dresses far beyond the ordinary buying. You will see the smartest effects, latest trimming and newest colors, which are cocoa, black, navy, bob-o-link, canna, grey and Havanna. All sizes, price \$30.00 to \$47.50.

### Women's Suits, \$29.50 and \$39.50

Bloused, but bloused ever so slightly, which is just about the most becoming thing in the world. Twenty other styles in this perfectly wonderful collection, box coats, blouse coats, straight lines, corded, braided embroidered suits with a swing to them. Mostly twills and mostly navy blue, some tan and black. We wish you could compare them with suits from some other store at \$5 to \$8 more. Specialed at \$29.50 and \$39.50.

The Past Week Great Shipments have been unpacking for the New Enlarged Downstairs Store---A store in itself, now.

**Dinner Sets** French and English, wonderful showing, the set \$17.00 to \$150.00.

**Doll's Carriages** in natural, ivory, pink and blue. Each \$4.95 to \$16.00.

**"Bikes,"** many kinds, all with rubber tires, Each \$3.75 to \$12.50.

**New Pottery, Vases, Fern and Plant Holders.** Each 25c to \$1.50.

**New and Better-Than-Ever Ma-Ma Dolls.** Each up to \$5.50.

**Blue Bird Bread and Flour Container,** highly enamelled. Each \$2.50 to \$3.40.

**Cut Glass Tumblers, extra special, a half-dozen for \$3.00.**

**Brass Tea Kettles.** Each \$1.75.

**New Imported Flower Holders.** Each \$1.75.

**H.S. & S. Co.**