

### CHURCH SERVICES

**ST. PAUL'S ANGLICAN**  
VEN. ARCHDEACON IRVING,  
Rector.  
Services at 11 a.m. and 7 p.m.  
Monday, 4:30 p.m.—Junior Aux-  
iliary in Schoolroom.  
Tuesday, 2:30 p.m.—Women's Aux-  
iliary.  
All are cordially invited to attend  
these services.

**KNOX PRESBYTERIAN**  
Rev. W. T. BROWN, Minister.  
Services at 11 a.m. and 7 p.m., Sun-  
day.  
Y. P. S., Thursday at 8 p.m.  
You are invited to these services.  
Choir practice, Thursday at 9 p.m.

**WESLEY METHODIST**  
REV. G. SMITHERMAN, Pastor  
Services at 11 a.m. and 7 p.m.

**GARNET METHODIST**  
1:30 p.m.—Sunday School  
2:30 p.m.—Church Service.  
Epworth League and Prayer Meet-  
ing on Friday evening at 8 p.m.

### PROFESSIONAL CARDS

#### PHYSICIAN

**I. J. Leatherdale, M.D.**  
OFFICE HOURS  
10 to 12 a.m. 2 to 4 p.m.  
7 to 9 p.m.  
JARVIS ONTARIO

#### DENTIST

**Dr. R. G. Hyde**  
DENTIST  
Office Hours: 9 to 12 a.m.; 1:30 to  
5:30 p.m.  
Office next D. N. Almas' Seed Store  
Phone 195  
MAIN ST., HAGERSVILLE

**DR. LILLIAN A. SHERWIN D. C.**  
CHIROPRACTOR  
At American Hotel, Jarvis  
Tuesdays and Fridays  
8 to 10 a.m.  
Fixed adjustments, \$5.00  
Office—21 Robinson St., Simcoe  
Phone 504

#### BARRISTERS, ETC.

**Arrell & Arrell**  
Barristers, Etc.  
HAMILTON — CALEDONIA  
Sun Life Bldg. Roper's Block  
Money to Loan at Lowest Rates  
Harrison Arrell, K. C.,  
County Crown Attorney  
S. Cameron Arrell

**Kelly, Porter & Kelly**  
Barristers, Solicitors, Notaries, Etc.  
W.E. Kelly, K.C. J. PORTER  
County Treas.  
DAVID E. KELLY  
Solicitors for Norfolk County Council  
SIMCOE, ONTARIO  
Money To Loan At Lowest Rates

#### VETERINARY

**Dr. E. Slack, B.V.Sc.**  
VETERINARY  
Hagersville Phone 24  
MODERATE RATES

#### PIANO TUNING

**Alex G. Glass**  
Expert Piano Tuning  
1249 KING ST. E., HAMILTON  
Leave orders or ask for information  
at the office of The Jarvis Record

#### HOTELS

**American Hotel**  
R. A. NELLES, Prop.  
Best Accommodation for the Trav-  
elling Public  
Near G.T.R. Station  
JARVIS ONTARIO

#### Eyesight Specialist

Modern Scientific  
Eye Examinations  
SPECIAL ATTENTION GIVEN TO  
CHILDREN'S EYES.

CONSULT  
**E. GORDON JACKSON**  
Registered Optometrist  
Phone No. 2.

**E. H. JACKSON Co., Ltd**  
SIMCOE, ONTARIO

### PLAY AT NANTICOKE PROVES SUCCESSFUL

The play, "Dot, the Miner's Daugh-  
ter," from Hartford, given under the  
auspices of the Nanticoke Women's  
Institute in the town hall, Nanticoke,  
on Tuesday, January 29, was a grand  
success.

The sudden change in the weather  
and the roads prevented the players  
from getting there until after 10 o'-  
clock. The play was well staged and  
with the aid of their own orchestra  
provided a splendid program.

The door receipts were \$25.00.  
The cast was as follows: David Ma-  
son, George Tukes; Herbert Mason,  
Chas. Muna; Royal Meadows, Wilber  
Renner; Arthur Slyid, Fred Janes;  
George Criston, John Thompson; Car-  
son Swift, Wm. Manrol; Buster or  
Tony, Leonard Cooper; Ebony, Asa  
Walker; Mrs. Mason, Mrs. John  
Thompson; Dot, the Miner's Daugh-  
ter, Mrs. Asa Walker; Mrs. Criston,  
Margrete Smith; Old Black Hatrika,  
Mrs. George Munn.

#### HAS TO WALK HOME

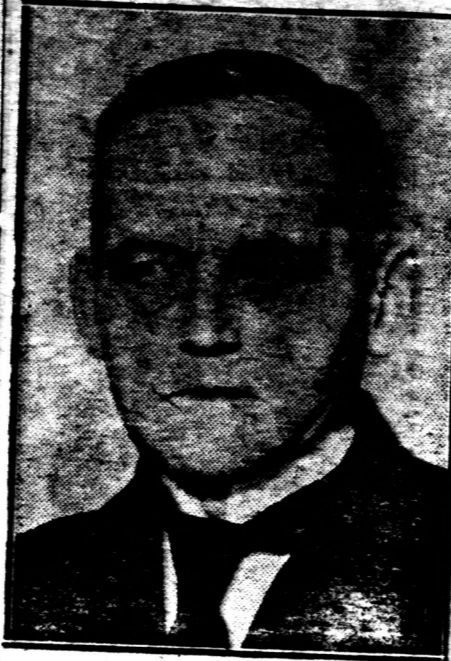
It was unfortunate for A. W. Oakes  
that he did not securely fasten his  
horse while attending the concert at  
Nanticoke on Tuesday night. Conse-  
quently he had to walk home. The  
horse got loose and returned to its  
former home in Jarvis. Mr. Oakes  
had unhitched the horse, so no dam-  
age was done.

#### TOMATO CASHMERE FOR SPRING WEAR



Cashmere is the material for  
this suit in tomato red, trimmed  
with a soft brown fur known as  
summer ermine. The skirt is  
straight and narrow while the  
coat flares slightly, and is of  
three-quarters length.

### IS CHANCELLOR



**PHILIP SNOWDEN**, new Brit-  
ish Chancellor of the Exchequer,  
and a leading spirit in the Labor  
party. He is a man of extra-  
ordinary wide knowledge, whose  
activities are limited by a very  
frail physique.

### OYSTER SUPPER

(Continued from Page 1)

conviction is that there is no pro-  
fession which requires the exercise of  
keener and more profound knowledge  
and eternal vigilance, than farming  
if it is to achieve the success it de-  
serves as one of, if not the basic in-  
dustry.

The program was interspersed with  
a number of vocal and instrumental  
selections of high merit, excellently  
rendered by the Misses Miller and  
Stallwood.

The interesting occasion was  
brought to a close with the singing  
of the national anthem.

#### NOTICE TO CREDITORS

In the matter of the Estate of Wil-  
liam Kindree, late of the Township  
of Walpole in the County of Hal-  
dmand, Farmer, deceased.

NOTICE is hereby given, pursu-  
ant to R.S.O., Chapter 121, Section 56,  
that all creditors and others having  
claims against the estate of the said  
William Kindree, who died on or  
about the third day of November,  
1918, are required on or before the  
15th day of February, 1924, to send  
by post prepaid or deliver to Lavina  
Kindree, Port Dover, Ont., the ad-  
ministratrix of the estate of the said  
deceased, or to MacGaw Macdonald,  
Port Dover, Ont., solicitor for the  
said administratrix, their christian  
and surnames, addresses and descrip-  
tions, the full particulars of their  
claim, a statement of their account  
and the nature of securities, if any,  
held by them.

AND further take notice, that after  
such last mentioned date, the said ad-  
ministratrix will proceed to distribute  
the assets of the deceased among the  
parties entitled thereto, having re-  
gard only to the claims of which she  
shall then have notice and that the  
administratrix will not be liable for  
the said assets or any part thereof  
if such claims notice shall not have been  
received by her at the time of such dis-  
tribution.

DATED this 14th day of January,  
1924.  
MacGaw Macdonald,  
Solicitor for the Administratrix.

## FULL PARTICULARS in today's "Record" of Fall' Greatest Febru- ary and Furniture Sale

FALLS' DEPARTMENT STORE, SIMCOE



## An Opportunity For You and For Us

We have twelve Winter Overcoats  
left in stock and they must be moved.  
We have selected this week to move  
them because, if we wait longer, we  
will have to keep them until next  
winter. It is a business proposition  
with us. We must sell them to get  
the money to put into goods that will  
turn over several times before next  
winter. We cannot make profits on  
goods lying on our shelves or on the  
money tied up in such goods. That

is the reason this opportunity is  
knocking at your door. The price is  
down to the limit. We are figuring  
no profit on the coats that we will  
sell this week. If you wait until next  
year we will have to figure a profit  
to pay us interest on our investment.

These Coats are made to keep out  
the cold—silk and double lined. You  
will be proud to wear any one of  
them and they are built to keep you  
warm.

**THE PRICES ARE  
From \$15 to \$23**

### OYSTER SHELL at \$1.50 per Cwt.

The regular price is \$2.00 per cwt.,  
or three cents a pound in smaller  
quantities. We over-estimated the  
demand and bought more than we  
can move quickly at the regular  
price. That is the reason you can  
buy cheaper now. And it is just the  
time of year to benefit. Your chick-  
ens cannot get at the grit they need.  
You must provide it and you cannot  
do so any more economically than by

taking advantage of this offer on  
Oyster Shell.

Sugar, Redpath or St. Lawrence,  
at \$10.75 per bag.

Potatoes, \$1.50 per bag.

Try our delicious home-made Taf-  
fies, fresh each week.

Big shipment of Neilson's finest  
Chocolates, just in.

## Allen & Leatherdale

JARVIS, ONT.

**F**IRST-CLASS work-  
manship and the price  
on your wiring job are  
both important — but the  
workmanship is the more  
important. We promise you  
satisfaction. We have wir-  
ed a number of houses and  
stores in Jarvis in the last  
two weeks. We will tell you  
who they are and you can  
ask them regarding our  
work. It is only fair to  
yourself to allow us to quote  
a price on your contract.

A full line of Electrical  
Fixtures always in stock and  
the price is right. We invite  
your inspection.

**W. A. Owen**