

THE JARVIS RECORD

JARVIS, ONTARIO

Is published every Thursday morning

Subscription Rates
\$1.50 a year in advance, \$2.00 a year to subscribers in United States. The date to which a subscription is paid is indicated on the address label.

Advertising Rates
Small advertisements—For Sale, To Let, Wanted, Lost & Found; Coming Events, etc.; 25 words and under, 35c; one cent for each additional word; Cash. If charged, 15c per cent per word.

Contract advertising—Send for rate card.

Births, Marriages, Deaths—Free In Memoriam and Engagement Announcements—50c; verse, 4 lines 25c; one insertion.

Advertisements without specific instructions will be inserted till for- bid and charged accordingly.

GEO. L. MILLER

Editor and Proprietor

EDITORIAL

The Board of Trade held a meeting on Tuesday evening Apr. 12 in the interests of the 24th of May Celebration, it being the second attempt to hold a successful meeting in order to organize the various committees to take charge of the day's activities. A fair representation was present, although it would by no means exemplify a desire on the part of the majority of the citizens to put over again, what the Board of Trade and the Booster Club have successfully carried on for the past three years. However there were enough boosters present to outline a program that will excel that of former years. The Baseball Boys have been granted the concession rights and should weather conditions prove favorable the proceeds they derive will no doubt place them in a financial position suitable to carry on the seasons expenses. Several unique attractions are being planned and the enjoyment to be derived from these alone is going to be worth more than the price of admission in themselves and from all reports the business men in town intend representing themselves in the Calithumpian parade individually. Besides the many others who will no doubt enter, so we will no doubt see the greatest parade yet on the coming 24th.

ONTARIO GIRLS' GARDEN AND CANNING CLUB REGULATIONS

1—Membership will be open to girls between the ages of 12 and 20 years.

2—A club unit will have a minimum membership of 15.

3—Each club should have a club leader.

4—Each club should hold at least two regular meetings during the club year, one for instruction in canning and the other an achievement day. In addition, each contestant will be visited once or twice during the summer when the girls will be judged and suggestions offered for improvement.

5—Club members may elect from its own membership, club officers, consisting of President, Vice-President and Secretary.

6—A local achievement day shall be held at the time of the Caledonia Fall Fair.

7—At least 2-3 of the members engaged in the project will be required to complete same.

8—As far as possible all work in connection with the project shall be done by the club members.

9—All members of the club shall plant seed recommended by the Ontario Department of Agriculture, which can be purchased from the Agricultural Representative at 50c per package which is below cost.

10—Club members shall keep such garden and canning notes as are required by those in charge of the competition.

11—Each garden will be 30 feet x 40 feet for hand cultivation and 35 feet x 75 feet for horse cultivation.

12—The crops and the number of feet of each to be grown in each garden will be as follows:

| Hand | Horse |
|------------------------------|-------|
| Tomatoes 60 ft | 50 ft |
| Corn 75 ft | 75 ft |
| Cabbage 90 ft | 75 ft |
| Peas 30 ft | 40 ft |
| Beans 60 ft | 65 ft |
| Onions (seed) 100 ft | 75 ft |
| Green Onions (sets) 50 ft | 25 ft |
| Onions (pickling) 25 ft | 25 ft |
| Spinach 30 ft | 50 ft |
| Radish 15 ft | 15 ft |
| Lettuce 15 ft | 15 ft |
| Parsnips 25 ft | 50 ft |
| Beets 50 ft | 75 ft |
| Carrots 15 ft | 15 ft |
| Swiss Chard 15 ft | 15 ft |
| Cucumbers 15 ft | 15 ft |
| Squash 4 hills 4 hills | 10 ft |
| (To be planted amongst corn) | |
| Citron 15 ft | 10 ft |

13—In addition a package of each of the following flower seeds will be given each contestant: aster, phlox, zinnia, cosmos, African marigold, verbena, calendula, gaillardia, coreopsis, (these may be planted around the home to help beautify the surroundings).

14—Gardens shall be planted according to either of the plans as outlined in a small pamphlet which will be supplied each contestant. Cultural instructions are also outlined in the pamphlet.

15—Contestants should be encouraged to use the vegetables when scoring the gardens.

16—Each club member must make an exhibit or display at an achievement day, such exhibit shall consist of a display of fresh vegetables and of an exhibit of one pint of each of four different vegetables.

17—Prizes will be awarded on the following basis:

1. Garden score 60%
2. Canning and notes 10%
3. Exhibit 10%
4. 10 questions based on nutritive value of vegetables and canning principals 20%

PROFESSIONAL CARDS

Arrell & Arrell
HAMILTON—Sun Life Buildings
CALDWELL—Rogers Block
HARRISON ARRELL, K.C.
County Crown Attorney
S. Cameron Arrell

Kelly, Porter & Kelly
SIMCOE, ONTARIO.

Solicitors for Norfolk County Council
DAVID E. KELLY
W. E. Kelly, K.C., J. Porter
County Attorney
Money to Loan at Lowest Rates

MACKAY & INNES
Barristers, Solicitors,
Notaries, etc.

Money to loan at lowest rates.
OFFICES—70 Brock Street,
SIMCOE, ONTARIO.
Telephone 38.

W. P. MACKAY, K.C. — H. P. INNES

PHYSICIANS

I. J. Leatherdale, M.D.
OFFICE HOURS
10 to 12 a.m. 2 to 5 p.m.
7 to 9 p.m.
JARVIS ONTARIO

DR. E. M. JONES
PHYSICIAN AND SURGEON
Office Hours: 9 to 10 a.m.
2 to 4 p.m.
PHONE 74

OFFICE—MAIN STREET, JARVIS

CONCERT

To be held under the auspices of the Jarvis W. L. in aid of the Canadian National Institute for the Blind

Wesley United Church

FRIDAY, April 15

at 8 p. m. sharp

The programme will consist of lantern slides, and Vocal and Instrumental Music

Admission 25c

You Pay for this Washer with the money it saves



THE NEW THOR AGITATOR WASHER

Use the new improved THOR for ALL of your laundry. Your clothes will be washed spotlessly clean—quickly and safely. You will marvel at its ease of operation. And the money it saves every week will more than pay its cost in a few short months.

Let us show you this new THOR today. Come in and see its many features including the THOR free-rolling wringer—a vast improvement over old types. No obligation.

Ask For Free Demonstration

W. WILLIS

JARVIS

ONTARIO

De Forest Crosley's Greatest Radio Values

THE BALLAD

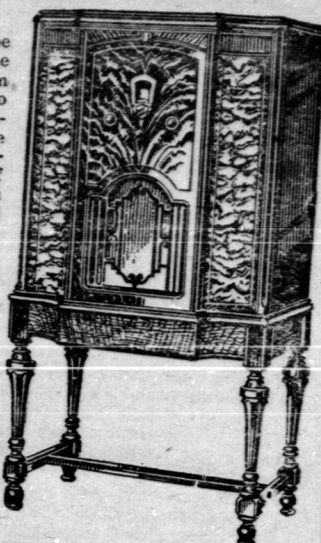
Using the new Pentode tube which gives eight times performance in a six tube chassis... two Multi-Mu Tubes... full size dynamic speaker... Complete Range tone control... extra speaker terminals... complete shielding of all parts... rubber block chassis suspension... Cabinet of butt wall nut and quilted maple.

\$109.50

THE CANTERBURY

Super-heterodyne power—better than seven tube performance—all 'test features—guaranteeing superb reception—and at the price of a console lacking the power found only in super-heterodyne. Unusually beautiful console cabinet with wing panels of quilted maple.

\$84.50



THE RPHASODY

An eight tube super-heterodyne with new Autodyne First Detector... Frequency Rejection... full size dynamic speaker... Complete Range tone control... extra speaker terminals... complete shielding of integral parts—cabinet of highly figured maple and California walnut.

\$129.50

Liberal Trade-in Allowance on your old Radio or Phonograph

W. Willis

The Jarvis Booster Club will hold their Opening Dance

of the season in the

Jarvis Arena

on the evening of

Friday, April 22

Lou Gibson's 7-piece Orchestra of Simcoe

Lunch sold in the Arena

Admission Including Tax 35c



Health Service

OF THE

Canadian Medical Association

Edited by

GRANT FLEMING, M.D., ASSOCIATE SECRETARY

ISOLATION HOSPITALS

Our older readers may recall the time when they used to hold their breath in passing a house which was placarded for a communicable disease. They may also remember that isolation hospitals were built away from the residential section and that the smallpox hospital was regarded as a pest house.

That attitude can be understood when we realize that, in the past, it was generally believed that the communicable diseases were air-borne. It was during the same period also that sewer gas was considered to be a serious menace and was regarded as the cause of many ills.

We know now that disease is not air-borne, and we know too that the germs of disease are usually spread in a fairly direct manner from the sick to the well, or by the transference of fresh, germ laden secretions. The sick are isolated in order to set up a barrier which will prevent contact of the sick with the well, and so stop any chance of the transfer of secretions.

Isolation hospitals are required because in many homes it is not possible to isolate the case. To begin with, the home may be overcrowded and so a separate room is not available. The case of communicable disease requires nursing care, and the mother who has other children to look after cannot give her whole time to the case. If the case is a serious one, then the treatment facilities of a hospital are required as they are in any serious illness.

The community which isolation hospitals have which is to be thankful to the isolation hospitals, which are a true community which aids in protecting the community and which is a true reason for their existence. It has only been recently that the public has begun to regard isolation hospitals as a pest house. To be avoided at all costs, they are recognized as a necessary part of life. To a certain extent, they still persist with reputation hospitals, and they hesitate to commit the care of these hospitals to the hands of the community.

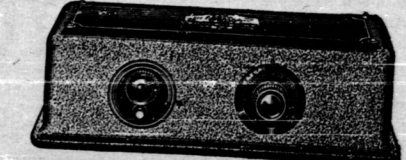
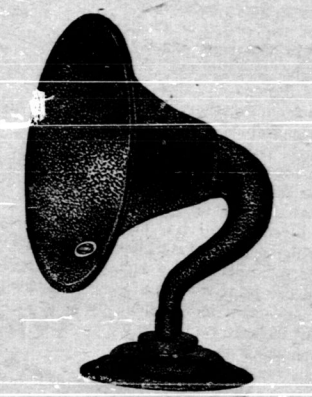
The isolation hospitals are a necessary part of life. They are a true community which aids in protecting the community and which is a true reason for their existence. It has only been recently that the public has begun to regard isolation hospitals as a pest house. To be avoided at all costs, they are recognized as a necessary part of life. To a certain extent, they still persist with reputation hospitals, and they hesitate to commit the care of these hospitals to the hands of the community.

QUESTIONS concerning isolation hospitals should be addressed to the Canadian Medical Association, 180 College Street, Toronto, Ontario.

Outstanding Values in Radio Accessories

ONE WEEK ONLY Commencing April 15

Take Advantage of these Bargains



1 only Atwater Kent 5-tube Battery Radio, complete with tubes and batteries, priced for quick sale at \$12.00

- 45 Volt Heavy Duty B. Batteries, reg. \$2.75 \$2.30
- 4 1-2 Volt C Batteries, reg. 60c, 45c
- UX 201 A Tubes, regular \$1.15, 95c
- UX 227 A Tubes, regular 1.50, 1.25
- UX 245 Tubes, regular \$1.65, 1.35
- UX 250 tubes, regular \$1.50, 1.25
- UX 171 A tubes regular \$1.35, 1.10
- UY 224 A Tubes, regular \$2.40, 2.00
- 235 Tubes regular \$2.40, 1.95
- 247 Tubes, regular \$2.35, 1.95

W. Willis

THE NEW LEONARD ELECTRIC REFRIGERATORS

Which are now on display in our showrooms offer The following Advantages

The Leonard LEN-A-DOR—A touch of the toe opens the door. A great convenience and an exclusive Leonard feature. With both hands full, the user touches the LEN-A-DOR and the door swings open.

The Leonard Chill-ometer—Upper knob serves as defrosting switch and automatic cut-out, providing overload protection for motor. Lower knob permits selection of eight freezing speeds. One-piece Interior—Food compartment lining is in one piece, with rounded corners, easy to clean. Finished in the famous Leonard porcelain, "clean as a china dish."

Porcelain Cooling Unit—Sanitary and attractive Chromium finished metal door separates ice cube trays from food space.

Trays—The metal "Sanitrays" and the removable partitions are treated electrically (anodic process) to preserve their original sanitary finish. Rubber trays made of special formula, odorless rubber. Perforated grid type. Movable tray shelves permit substitution of one deep for two smaller trays. Egg Basket—Saves shelf room and protects eggs from breakage.

Table Top—A great convenience when arranging contents of cabinet.

Hardware—New type door latch, simple, positive attractive, ebony finish handle. Semi-concealed hinges, will support 400 pounds weight. All hardware chromium plated.

Finish—The whitest lacquer ever developed, on Bonderized rust-proofed steel. Permanence of finish insured by the most efficient and most expensive lacquering process in use in the industry. All porcelain, whether for interior or exterior use baked in our own great porcelain factory under Leonard process.

Doors—Extra heavy doors of steel and wood construction, insulated in the same efficient manner as the cabinet. Doors sealed by one-piece gasket of special odorless refrigerator rubber. Edge of door trimmed in beautiful black porcelain to harmonize with interior trim. Right or left-hand doors optional.

Jarvis REICHEL & WILLIS Ontario