

British Ambassador Dies Suddenly After Message to U.S.



Stricken suddenly, the Marquess of Lothian, British ambassador to the U.S., died in Washington a few hours after a speech he had written was read to a Baltimore audience. In his speech, Lord Lothian challenged the people of the U.S. to help Britain. With such help, Britain "can win and win decisively in 1942, if not before," he declared.

SUNDAY SCHOOL LESSON

LESSON XIII
JESUS REQUIRES FAITHFULNESS, Luke 12: 48-50

PRINTED TEXT, Luke 12: 48-50. GOLDEN TEXT—To whomsoever much is given, of him shall much be required, Luke 12: 48.

THE LESSON IN ITS SETTING
Time—All the events of this chapter occurred in November and December, A.D. 29.

Placating His Return
From this lesson we receive the profound impression of the fact that in his teaching while on earth the Lord Jesus touched upon the most important, most fundamental, most character-influencing turns which can ever be presented to men. Here in this one chapter we have light upon such subjects as hypocrisy, the fear of God, the eternal consequences of confessing Christ, the privilege of being taught by the Holy Spirit, the danger of covetousness, the importance of having treasure in heaven, the need for constant watchfulness, waiting for our Lord to return.

Placating His Return
Luke 12:23. Let your loins be girded about, and your lamps burning: for ye know not the day nor the hour when the Son of man will come. We are to be ready to meet our Lord when he comes. We are to be ready to meet our Lord when he comes. We are to be ready to meet our Lord when he comes.

37. Blessed are those servants, whom the lord when he cometh shall find watching: verily I say unto you, that he shall gird himself, and make himself sit down to meat, and shall come and serve them.

38. And he shall come and serve them, when he shall return from the marriage feast: so will he punish those servants that are asleep, because they know not his day of coming.

SCOUTING

Thirty acres of land on Trout Lake have been purchased jointly by the Scout Associations of Fort William and Port Huron for use as a campsite. Clearing operations along the lake shore have been commenced by Scouts, working on Saturdays.

An unusual Wolf Cub Pack is the 1st Edmondston Pack, of New Brunswick. Its members include several small American boys, who each meeting night cross the border from Fort Kent, Maine.

A plaque and individual medals, awarded them as winners of the Boy Scout Patrol camp cooking contest at the 1940 Toronto Exhibition, were presented to the Scouts of the 1st Huntsville Rotary Club. The winning patrol set up a demonstration table of the camp kitchen and

Proud Winner
The boys in England
One of the most interesting programs broadcast from the CBC chain is the Monday night feature at nine—'With the Troop'—presented by the Scouts of the British Isles and many Canadian soldiers interviewed, often lads who shot down Nazi planes or sailors who have sent one of Hitler's U-boats to the bottom. It brings you a front row seat in the war!

AROUND THE DIAL
Two weeks ago, the great Finnish composer, Jan Sibelius, was seventy-five years old. Some rank him as one of the greatest composers this world has seen—and this column is one of his many admirers. So stirring is his "Finlandia" that it is often used in pictures and on the radio as "music" music, when a sense of stirring action and impending doom is required. The patriotic veteran refused to leave his little house on the outskirts of Helsinki, when his country was invaded.

Each Friday night at 11 (standard WGR presents an entertaining program of memories called "Those Good Old Days," a feature that will bring back many thoughts of the days that have gone forever—the happiness, thrills and heart throbs stirred up by turning back the pages a bit. You will like it.

One of the best laughs any Sunday that can always be counted on

SCOUTING

Members of the seven other "Pack" units met at the Amherst Charter to the Peter of Colony Saving Scouts. Scouts are of all units met at the Amherst Charter to the Peter of Colony Saving Scouts. Scouts are of all units met at the Amherst Charter to the Peter of Colony Saving Scouts.

Measure of Responsibility
The attitude of watchfulness, of interest in the return of Christ, should particularly characterize teachers and leaders. This is the message of the parable of the fig tree, which Peter now asked. He inquired whether all believers would share equally in the blessings of the Lord's return; would not those like the apostles, who had been most prominent in his service receive from him a greater judgment than those who had been less prominent?

Measure of Responsibility
The attitude of watchfulness, of interest in the return of Christ, should particularly characterize teachers and leaders. This is the message of the parable of the fig tree, which Peter now asked. He inquired whether all believers would share equally in the blessings of the Lord's return; would not those like the apostles, who had been most prominent in his service receive from him a greater judgment than those who had been less prominent?

Measure of Responsibility
The attitude of watchfulness, of interest in the return of Christ, should particularly characterize teachers and leaders. This is the message of the parable of the fig tree, which Peter now asked. He inquired whether all believers would share equally in the blessings of the Lord's return; would not those like the apostles, who had been most prominent in his service receive from him a greater judgment than those who had been less prominent?

Measure of Responsibility
The attitude of watchfulness, of interest in the return of Christ, should particularly characterize teachers and leaders. This is the message of the parable of the fig tree, which Peter now asked. He inquired whether all believers would share equally in the blessings of the Lord's return; would not those like the apostles, who had been most prominent in his service receive from him a greater judgment than those who had been less prominent?

Measure of Responsibility
The attitude of watchfulness, of interest in the return of Christ, should particularly characterize teachers and leaders. This is the message of the parable of the fig tree, which Peter now asked. He inquired whether all believers would share equally in the blessings of the Lord's return; would not those like the apostles, who had been most prominent in his service receive from him a greater judgment than those who had been less prominent?

Measure of Responsibility
The attitude of watchfulness, of interest in the return of Christ, should particularly characterize teachers and leaders. This is the message of the parable of the fig tree, which Peter now asked. He inquired whether all believers would share equally in the blessings of the Lord's return; would not those like the apostles, who had been most prominent in his service receive from him a greater judgment than those who had been less prominent?

SCOUTING

Members of the seven other "Pack" units met at the Amherst Charter to the Peter of Colony Saving Scouts. Scouts are of all units met at the Amherst Charter to the Peter of Colony Saving Scouts. Scouts are of all units met at the Amherst Charter to the Peter of Colony Saving Scouts.

Measure of Responsibility
The attitude of watchfulness, of interest in the return of Christ, should particularly characterize teachers and leaders. This is the message of the parable of the fig tree, which Peter now asked. He inquired whether all believers would share equally in the blessings of the Lord's return; would not those like the apostles, who had been most prominent in his service receive from him a greater judgment than those who had been less prominent?

Measure of Responsibility
The attitude of watchfulness, of interest in the return of Christ, should particularly characterize teachers and leaders. This is the message of the parable of the fig tree, which Peter now asked. He inquired whether all believers would share equally in the blessings of the Lord's return; would not those like the apostles, who had been most prominent in his service receive from him a greater judgment than those who had been less prominent?

Measure of Responsibility
The attitude of watchfulness, of interest in the return of Christ, should particularly characterize teachers and leaders. This is the message of the parable of the fig tree, which Peter now asked. He inquired whether all believers would share equally in the blessings of the Lord's return; would not those like the apostles, who had been most prominent in his service receive from him a greater judgment than those who had been less prominent?

Measure of Responsibility
The attitude of watchfulness, of interest in the return of Christ, should particularly characterize teachers and leaders. This is the message of the parable of the fig tree, which Peter now asked. He inquired whether all believers would share equally in the blessings of the Lord's return; would not those like the apostles, who had been most prominent in his service receive from him a greater judgment than those who had been less prominent?

Measure of Responsibility
The attitude of watchfulness, of interest in the return of Christ, should particularly characterize teachers and leaders. This is the message of the parable of the fig tree, which Peter now asked. He inquired whether all believers would share equally in the blessings of the Lord's return; would not those like the apostles, who had been most prominent in his service receive from him a greater judgment than those who had been less prominent?

Measure of Responsibility
The attitude of watchfulness, of interest in the return of Christ, should particularly characterize teachers and leaders. This is the message of the parable of the fig tree, which Peter now asked. He inquired whether all believers would share equally in the blessings of the Lord's return; would not those like the apostles, who had been most prominent in his service receive from him a greater judgment than those who had been less prominent?

SCOUTING

Members of the seven other "Pack" units met at the Amherst Charter to the Peter of Colony Saving Scouts. Scouts are of all units met at the Amherst Charter to the Peter of Colony Saving Scouts. Scouts are of all units met at the Amherst Charter to the Peter of Colony Saving Scouts.

Measure of Responsibility
The attitude of watchfulness, of interest in the return of Christ, should particularly characterize teachers and leaders. This is the message of the parable of the fig tree, which Peter now asked. He inquired whether all believers would share equally in the blessings of the Lord's return; would not those like the apostles, who had been most prominent in his service receive from him a greater judgment than those who had been less prominent?

Measure of Responsibility
The attitude of watchfulness, of interest in the return of Christ, should particularly characterize teachers and leaders. This is the message of the parable of the fig tree, which Peter now asked. He inquired whether all believers would share equally in the blessings of the Lord's return; would not those like the apostles, who had been most prominent in his service receive from him a greater judgment than those who had been less prominent?

Measure of Responsibility
The attitude of watchfulness, of interest in the return of Christ, should particularly characterize teachers and leaders. This is the message of the parable of the fig tree, which Peter now asked. He inquired whether all believers would share equally in the blessings of the Lord's return; would not those like the apostles, who had been most prominent in his service receive from him a greater judgment than those who had been less prominent?

Measure of Responsibility
The attitude of watchfulness, of interest in the return of Christ, should particularly characterize teachers and leaders. This is the message of the parable of the fig tree, which Peter now asked. He inquired whether all believers would share equally in the blessings of the Lord's return; would not those like the apostles, who had been most prominent in his service receive from him a greater judgment than those who had been less prominent?

Measure of Responsibility
The attitude of watchfulness, of interest in the return of Christ, should particularly characterize teachers and leaders. This is the message of the parable of the fig tree, which Peter now asked. He inquired whether all believers would share equally in the blessings of the Lord's return; would not those like the apostles, who had been most prominent in his service receive from him a greater judgment than those who had been less prominent?

Measure of Responsibility
The attitude of watchfulness, of interest in the return of Christ, should particularly characterize teachers and leaders. This is the message of the parable of the fig tree, which Peter now asked. He inquired whether all believers would share equally in the blessings of the Lord's return; would not those like the apostles, who had been most prominent in his service receive from him a greater judgment than those who had been less prominent?

SCOUTING

Members of the seven other "Pack" units met at the Amherst Charter to the Peter of Colony Saving Scouts. Scouts are of all units met at the Amherst Charter to the Peter of Colony Saving Scouts. Scouts are of all units met at the Amherst Charter to the Peter of Colony Saving Scouts.

Measure of Responsibility
The attitude of watchfulness, of interest in the return of Christ, should particularly characterize teachers and leaders. This is the message of the parable of the fig tree, which Peter now asked. He inquired whether all believers would share equally in the blessings of the Lord's return; would not those like the apostles, who had been most prominent in his service receive from him a greater judgment than those who had been less prominent?

Measure of Responsibility
The attitude of watchfulness, of interest in the return of Christ, should particularly characterize teachers and leaders. This is the message of the parable of the fig tree, which Peter now asked. He inquired whether all believers would share equally in the blessings of the Lord's return; would not those like the apostles, who had been most prominent in his service receive from him a greater judgment than those who had been less prominent?

Measure of Responsibility
The attitude of watchfulness, of interest in the return of Christ, should particularly characterize teachers and leaders. This is the message of the parable of the fig tree, which Peter now asked. He inquired whether all believers would share equally in the blessings of the Lord's return; would not those like the apostles, who had been most prominent in his service receive from him a greater judgment than those who had been less prominent?

Measure of Responsibility
The attitude of watchfulness, of interest in the return of Christ, should particularly characterize teachers and leaders. This is the message of the parable of the fig tree, which Peter now asked. He inquired whether all believers would share equally in the blessings of the Lord's return; would not those like the apostles, who had been most prominent in his service receive from him a greater judgment than those who had been less prominent?

Measure of Responsibility
The attitude of watchfulness, of interest in the return of Christ, should particularly characterize teachers and leaders. This is the message of the parable of the fig tree, which Peter now asked. He inquired whether all believers would share equally in the blessings of the Lord's return; would not those like the apostles, who had been most prominent in his service receive from him a greater judgment than those who had been less prominent?

Measure of Responsibility
The attitude of watchfulness, of interest in the return of Christ, should particularly characterize teachers and leaders. This is the message of the parable of the fig tree, which Peter now asked. He inquired whether all believers would share equally in the blessings of the Lord's return; would not those like the apostles, who had been most prominent in his service receive from him a greater judgment than those who had been less prominent?

SCOUTING

Members of the seven other "Pack" units met at the Amherst Charter to the Peter of Colony Saving Scouts. Scouts are of all units met at the Amherst Charter to the Peter of Colony Saving Scouts. Scouts are of all units met at the Amherst Charter to the Peter of Colony Saving Scouts.

Measure of Responsibility
The attitude of watchfulness, of interest in the return of Christ, should particularly characterize teachers and leaders. This is the message of the parable of the fig tree, which Peter now asked. He inquired whether all believers would share equally in the blessings of the Lord's return; would not those like the apostles, who had been most prominent in his service receive from him a greater judgment than those who had been less prominent?

Measure of Responsibility
The attitude of watchfulness, of interest in the return of Christ, should particularly characterize teachers and leaders. This is the message of the parable of the fig tree, which Peter now asked. He inquired whether all believers would share equally in the blessings of the Lord's return; would not those like the apostles, who had been most prominent in his service receive from him a greater judgment than those who had been less prominent?

Measure of Responsibility
The attitude of watchfulness, of interest in the return of Christ, should particularly characterize teachers and leaders. This is the message of the parable of the fig tree, which Peter now asked. He inquired whether all believers would share equally in the blessings of the Lord's return; would not those like the apostles, who had been most prominent in his service receive from him a greater judgment than those who had been less prominent?

Measure of Responsibility
The attitude of watchfulness, of interest in the return of Christ, should particularly characterize teachers and leaders. This is the message of the parable of the fig tree, which Peter now asked. He inquired whether all believers would share equally in the blessings of the Lord's return; would not those like the apostles, who had been most prominent in his service receive from him a greater judgment than those who had been less prominent?

Measure of Responsibility
The attitude of watchfulness, of interest in the return of Christ, should particularly characterize teachers and leaders. This is the message of the parable of the fig tree, which Peter now asked. He inquired whether all believers would share equally in the blessings of the Lord's return; would not those like the apostles, who had been most prominent in his service receive from him a greater judgment than those who had been less prominent?

Measure of Responsibility
The attitude of watchfulness, of interest in the return of Christ, should particularly characterize teachers and leaders. This is the message of the parable of the fig tree, which Peter now asked. He inquired whether all believers would share equally in the blessings of the Lord's return; would not those like the apostles, who had been most prominent in his service receive from him a greater judgment than those who had been less prominent?

SCOUTING

Members of the seven other "Pack" units met at the Amherst Charter to the Peter of Colony Saving Scouts. Scouts are of all units met at the Amherst Charter to the Peter of Colony Saving Scouts. Scouts are of all units met at the Amherst Charter to the Peter of Colony Saving Scouts.

Measure of Responsibility
The attitude of watchfulness, of interest in the return of Christ, should particularly characterize teachers and leaders. This is the message of the parable of the fig tree, which Peter now asked. He inquired whether all believers would share equally in the blessings of the Lord's return; would not those like the apostles, who had been most prominent in his service receive from him a greater judgment than those who had been less prominent?

Measure of Responsibility
The attitude of watchfulness, of interest in the return of Christ, should particularly characterize teachers and leaders. This is the message of the parable of the fig tree, which Peter now asked. He inquired whether all believers would share equally in the blessings of the Lord's return; would not those like the apostles, who had been most prominent in his service receive from him a greater judgment than those who had been less prominent?

Measure of Responsibility
The attitude of watchfulness, of interest in the return of Christ, should particularly characterize teachers and leaders. This is the message of the parable of the fig tree, which Peter now asked. He inquired whether all believers would share equally in the blessings of the Lord's return; would not those like the apostles, who had been most prominent in his service receive from him a greater judgment than those who had been less prominent?

Measure of Responsibility
The attitude of watchfulness, of interest in the return of Christ, should particularly characterize teachers and leaders. This is the message of the parable of the fig tree, which Peter now asked. He inquired whether all believers would share equally in the blessings of the Lord's return; would not those like the apostles, who had been most prominent in his service receive from him a greater judgment than those who had been less prominent?

Measure of Responsibility
The attitude of watchfulness, of interest in the return of Christ, should particularly characterize teachers and leaders. This is the message of the parable of the fig tree, which Peter now asked. He inquired whether all believers would share equally in the blessings of the Lord's return; would not those like the apostles, who had been most prominent in his service receive from him a greater judgment than those who had been less prominent?

Measure of Responsibility
The attitude of watchfulness, of interest in the return of Christ, should particularly characterize teachers and leaders. This is the message of the parable of the fig tree, which Peter now asked. He inquired whether all believers would share equally in the blessings of the Lord's return; would not those like the apostles, who had been most prominent in his service receive from him a greater judgment than those who had been less prominent?

SCOUTING

Members of the seven other "Pack" units met at the Amherst Charter to the Peter of Colony Saving Scouts. Scouts are of all units met at the Amherst Charter to the Peter of Colony Saving Scouts. Scouts are of all units met at the Amherst Charter to the Peter of Colony Saving Scouts.

Measure of Responsibility
The attitude of watchfulness, of interest in the return of Christ, should particularly characterize teachers and leaders. This is the message of the parable of the fig tree, which Peter now asked. He inquired whether all believers would share equally in the blessings of the Lord's return; would not those like the apostles, who had been most prominent in his service receive from him a greater judgment than those who had been less prominent?

Measure of Responsibility
The attitude of watchfulness, of interest in the return of Christ, should particularly characterize teachers and leaders. This is the message of the parable of the fig tree, which Peter now asked. He inquired whether all believers would share equally in the blessings of the Lord's return; would not those like the apostles, who had been most prominent in his service receive from him a greater judgment than those who had been less prominent?

Measure of Responsibility
The attitude of watchfulness, of interest in the return of Christ, should particularly characterize teachers and leaders. This is the message of the parable of the fig tree, which Peter now asked. He inquired whether all believers would share equally in the blessings of the Lord's return; would not those like the apostles, who had been most prominent in his service receive from him a greater judgment than those who had been less prominent?

Measure of Responsibility
The attitude of watchfulness, of interest in the return of Christ, should particularly characterize teachers and leaders. This is the message of the parable of the fig tree, which Peter now asked. He inquired whether all believers would share equally in the blessings of the Lord's return; would not those like the apostles, who had been most prominent in his service receive from him a greater judgment than those who had been less prominent?

Measure of Responsibility
The attitude of watchfulness, of interest in the return of Christ, should particularly characterize teachers and leaders. This is the message of the parable of the fig tree, which Peter now asked. He inquired whether all believers would share equally in the blessings of the Lord's return; would not those like the apostles, who had been most prominent in his service receive from him a greater judgment than those who had been less prominent?

Measure of Responsibility
The attitude of watchfulness, of interest in the return of Christ, should particularly characterize teachers and leaders. This is the message of the parable of the fig tree, which Peter now asked. He inquired whether all believers would share equally in the blessings of the Lord's return; would not those like the apostles, who had been most prominent in his service receive from him a greater judgment than those who had been less prominent?

SCOUTING

Members of the seven other "Pack" units met at the Amherst Charter to the Peter of Colony Saving Scouts. Scouts are of all units met at the Amherst Charter to the Peter of Colony Saving Scouts. Scouts are of all units met at the Amherst Charter to the Peter of Colony Saving Scouts.

Measure of Responsibility
The attitude of watchfulness, of interest in the return of Christ, should particularly characterize teachers and leaders. This is the message of the parable of the fig tree, which Peter now asked. He inquired whether all believers would share equally in the blessings of the Lord's return; would not those like the apostles, who had been most prominent in his service receive from him a greater judgment than those who had been less prominent?

Measure of Responsibility
The attitude of watchfulness, of interest in the return of Christ, should particularly characterize teachers and leaders. This is the message of the parable of the fig tree, which Peter now asked. He inquired whether all believers would share equally in the blessings of the Lord's return; would not those like the apostles, who had been most prominent in his service receive from him a greater judgment than those who had been less prominent?

Measure of Responsibility
The attitude of watchfulness, of interest in the return of Christ, should particularly characterize teachers and leaders. This is the message of the parable of the fig tree, which Peter now asked. He inquired whether all believers would share equally in the blessings of the Lord's return; would not those like the apostles, who had been most prominent in his service receive from him a greater judgment than those who had been less prominent?

Measure of Responsibility
The attitude of watchfulness, of interest in the return of Christ, should particularly characterize teachers and leaders. This is the message of the parable of the fig tree, which Peter now asked. He inquired whether all believers would share equally in the blessings of the Lord's return; would not those like the apostles, who had been most prominent in his service receive from him a greater judgment than those who had been less prominent?

Measure of Responsibility
The attitude of watchfulness, of interest in the return of Christ, should particularly characterize teachers and leaders. This is the message of the parable of the fig tree, which Peter now asked. He inquired whether all believers would share equally in the blessings of the Lord's return; would not those like the apostles, who had been most prominent in his service receive from him a greater judgment than those who had been less prominent?

Measure of Responsibility
The attitude of watchfulness, of interest in the return of Christ, should particularly characterize teachers and leaders. This is the message of the parable of the fig tree, which Peter now asked. He inquired whether all believers would share equally in the blessings of the Lord's return; would not those like the apostles, who had been most prominent in his service receive from him a greater judgment than those who had been less prominent?

SCOUTING

Members of the seven other "Pack" units met at the Amherst Charter to the Peter of Colony Saving Scouts. Scouts are of all units met at the Amherst Charter to the Peter of Colony Saving Scouts. Scouts are of all units met at the Amherst Charter to the Peter of Colony Saving Scouts.

Measure of Responsibility
The attitude of watchfulness, of interest in the return of Christ, should particularly characterize teachers and leaders. This is the message of the parable of the fig tree, which Peter now asked. He inquired whether all believers would share equally in the blessings of the Lord's return; would not those like the apostles, who had been most prominent in his service receive from him a greater judgment than those who had been less prominent?

Measure of Responsibility
The attitude of watchfulness, of interest in the return of Christ, should particularly characterize teachers and leaders. This is the message of the parable of the fig tree, which Peter now asked. He inquired whether all believers would share equally in the blessings of the Lord's return; would not those like the apostles, who had been most prominent in his service receive from him a greater judgment than those who had been less prominent?

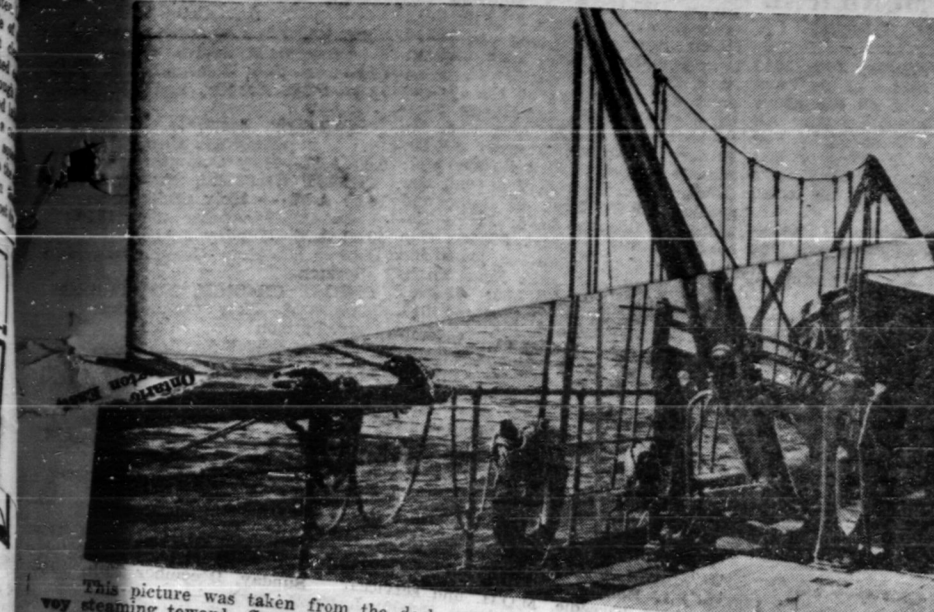
Measure of Responsibility
The attitude of watchfulness, of interest in the return of Christ, should particularly characterize teachers and leaders. This is the message of the parable of the fig tree, which Peter now asked. He inquired whether all believers would share equally in the blessings of the Lord's return; would not those like the apostles, who had been most prominent in his service receive from him a greater judgment than those who had been less prominent?

Measure of Responsibility
The attitude of watchfulness, of interest in the return of Christ, should particularly characterize teachers and leaders. This is the message of the parable of the fig tree, which Peter now asked. He inquired whether all believers would share equally in the blessings of the Lord's return; would not those like the apostles, who had been most prominent in his service receive from him a greater judgment than those who had been less prominent?

Measure of Responsibility
The attitude of watchfulness, of interest in the return of Christ, should particularly characterize teachers and leaders. This is the message of the parable of the fig tree, which Peter now asked. He inquired whether all believers would share equally in the blessings of the Lord's return; would not those like the apostles, who had been most prominent in his service receive from him a greater judgment than those who had been less prominent?

Measure of Responsibility
The attitude of watchfulness, of interest in the return of Christ, should particularly characterize teachers and leaders. This is the message of the parable of the fig tree, which Peter now asked. He inquired whether all believers would share equally in the blessings of the Lord's return; would not those like the apostles, who had been most prominent in his service receive from him a greater judgment than those who had been less prominent?

Royal Canadian Navy Assists in Maintaining Atlantic Lifeline



This picture was taken from the deck of a destroyer of the Royal Canadian Navy, and shows a convoy steaming towards Great Britain in defiance of Hitler's piracy on the high seas. Canadian warships are on duty to escort these precious cargoes, always on the lookout for surface raiders or undersea enemy craft. For every ship the Nazis are able to cripple or sink, hundreds reach their destination safely and unscathed.

Washing Day

Add a tablespoon methylened spirits to the last rinsing water of table and tray clothes—It gives them a glossy crispness when ironed, that can't be obtained in any other way.

THIS CURIOUS WORLD

IN SUMMER, A SQUARE WINTER, SUNBEAM SIZED BEAM, TWO SQUARE YARDS.

BALMVILLE, NEW YORK, WAS NAMED FOR A BALSAM OF GILEAD TREE LOCATED THERE.

DOES A HORSE HAVE TEETH AT BIRTH?

ANSWER: A colt may or may not have teeth at birth. If not, they appear within a week or ten days, and consist of two in the middle front of each jaw.

MAP PUZZLE

Answer to Previous Puzzle
1. Musical note. 2. Book of the Bible. 3. Name of a city. 4. Name of a river. 5. Name of a country. 6. Name of a month. 7. Name of a day. 8. Name of a season. 9. Name of a color. 10. Name of a fruit. 11. Name of a vegetable. 12. Name of a flower. 13. Name of a bird. 14. Name of an animal. 15. Name of a insect. 16. Name of a fish. 17. Name of a reptile. 18. Name of a mammal. 19. Name of a plant. 20. Name of a mineral. 21. Name of a metal. 22. Name of a stone. 23. Name of a gem. 24. Name of a wood. 25. Name of a fabric. 26. Name of a food. 27. Name of a drink. 28. Name of a sport. 29. Name of a game. 30. Name of a hobby. 31. Name of a profession. 32. Name of a trade. 33. Name of a science. 34. Name of an art. 35. Name of a religion. 36. Name of a philosophy. 37. Name of a theory. 38. Name of a law. 39. Name of a principle. 40. Name of a rule. 41. Name of a regulation. 42. Name of a custom. 43. Name of a tradition. 44. Name of a habit. 45. Name of a practice. 46. Name of a duty. 47. Name of a right. 48. Name of a privilege. 49. Name of a power. 50. Name of a right.

HEALTH PICS

Pointers on Warding Off Colds
Washing makes a person feel better, but it does not prevent colds. For more serious illness, should do everything we can to avoid them.

Boxcar Houses

Smallest Library
The little town of Colmar, N.M., population 75 persons, claims to have the smallest library in the world—the only library in a boxcar—and the only library paid for with pennies. Several women launched to build a library. With the pennies they purchased, a boxcar, moved it to a vacant lot, and the library has more than 1,700 volumes.

How Can I?

Q. How can I remove wax which has collected on silver or brass candlesticks?
A. Never try to scrape it off with a knife. Merely plunge the parts with wax on them into boiling water. The wax will melt and disappear.

What Science Is Doing

TELEVISION RESEARCH COSTLY
Although television may appear to be making slow progress, a vast amount of research is being done in this field. This is indicated by the report of the U.S. Federal Communications Commission, which has spent more than \$30,000 in research by the ten licensees of experimental television stations.

To Visit Bermuda

Commissioner Benjamin O. G. ...

SEWAGE GASES DRIVE BUSES

Stockholm is producing some of its own motor fuel from an unusual source: its sewage-disposal plants. Each of the disposal plants produces 8,000 cubic meters of methane gas every twenty-four hours. This is compressed into steel drums and is now being used as motor fuel for forty of the city's buses.

BLACKOUT BY LIGHT

The blacking out of a city for air raid protection without possible by use of lighting experiments being conducted at Schenectady, N.Y.

Goose's Breeding Ground Found

A mystery in North American ornithology has been solved with the discovery of the breeding grounds of Ross' goose in the Arctic.

Locomotives Now Go Twice The Distance

Locomotives of the Canadian National System now travel more than twice as far as formerly, before it is necessary to stop for coal and water. Increased tender capacity is the reason.

POP—Can't Even Hear Herself Think



By J. MILLER



HAVE YOU HEARD?

The new customer walked in the store. "Have you heard?" "No, sir, ma'am." "Some are tough and some are tender." "Well, I keep boarders. Pick out three of the toughest, please." To this unusual request the delighted grocer complied at once. "Please, ma'am, here are the toughest ones!"

Modern Etiquette

BY ROBERTA LEE

1. When you are a guest in a home, where the habit seems to be to keep the radio on all the time, would it be all right to ask that it be turned off?

2. What is the proper way to ask a question?

3. Should one ever ask personal questions of acquaintances?

4. Isn't it wrong for a person to thrust words of condolence upon you when you are suffering under affliction, and to discuss your sorrow?

5. Is it good form for a person to talk at length about his health?

6. How long should a bride remain at her wedding reception?

7. Do not hesitate to do so. This habit which is very annoying to guests as well as to the bride, is not only to the detriment of the bride, but also to the guests. The majority of people resent being asked personal questions. 4. You are suffering under affliction, and to discuss your sorrow? 5. Is it good form for a person to talk at length about his health? 6. How long should a bride remain at her wedding reception?

Indian Crafts Make Progress

Progress in Indian handicraft industries on reserves in Eastern Canada is reported by the Indian Affairs Branch, Department of Indian Affairs and Northern Development. Many traditional arts and crafts have been revived, and the sale of their handicraft products are tending to make the Indian people more self-sufficient. As a step towards the extension of these home industries among the Indians of Western Canada, six Indian workers from Ontario and Quebec are at present in the hands of the Indian Affairs Branch, at the Indian Affairs Branch, at the Indian Affairs Branch.