



TREASURE OF THE SEA

By George E. Walsh

SYNOPSIS... circumstances forced Dick and Pettigrew to get into different boats...

CHAPTER III... Dick concluded that he would be a hard customer to deal with...

He closed his eyes an instant as if to shut out the memory of it. When he opened them again, Captain Tucu was asking eagerly:

His lips quivered, and he saw the wide, heaven-limited sea for the shock of being adrift upon it...

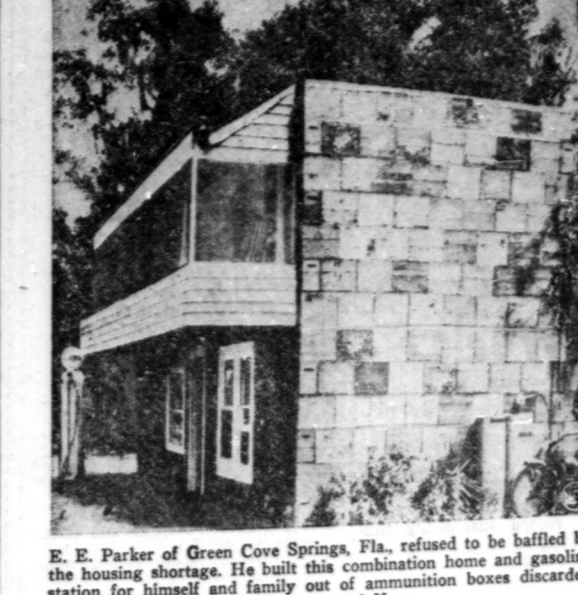
He glanced past the semi-circle of black faces and he saw the wide, heaven-limited sea for the shock of being adrift upon it...

He hesitated and cocked his head sideways in the attitude of one recalling something that eluded his memory...

The skipper was eyeing him, half in doubt, half in eager expectancy...

"If I had them," he said easily, "you could take them. There's all I brought away with me..."

FAMILY IS BOXED IN



E. E. Parker of Green Cove Springs, Fla., refused to be baffled by the housing shortage.

CHRONICLES OF GINGER FARM

By Gwendoline P. Clarke

Last Friday I think we all felt like saying—'Bring out the boat, run up the flag—we are through with the harvest.'...

On Friday we celebrated the end of harvest by taking in a show—the most appropriate show and coming at an opportune time—State Fair.

When I remembered the reason, I felt that I was not really being homesick, but that I was homesick for the Queen Elizabeth on a bank holiday night to catch the return bus from there.

It looks as if the next few weeks around here will be like a game of 'Washington Post' Thursdays means exit for Betty.

BE FIRM! Always insist on Maxwell House Coffee. It's Radiant-Roasted by a special process that captures all the extra flavor and goodness of the superb Maxwell House blend.

Sunday School Lesson

The Perils of Covetousness

Exodus 20:17; Proverbs 11:23, 24; Luke 12:15-21. Golden Text.—He that trusteth in his riches shall fall; but the righteous shall flourish as a branch.

The Tenth Commandment The Tenth Commandment is the most inward of all the commandments because it forbids not an external act, but a hidden mental state...

Folly of Covetousness The parable of covetousness pictures the man who was concerned solely with his own affairs.

Give Baby Air Give what you have him from many coughs and colds and possibility of other ailments, get baby out into the fresh air as often as possible.

Modern Etiquette

1. When a person is being introduced to another, it is a courteous acknowledgment necessary, even if the introduction is for any reason not agreeable.

2. When a young man is invited to dinner, and she knows he doesn't earn much money, should she be very modest in what she orders?

IMPOSSIBLE TO HIDE THE FACT THAT MAXWELL HOUSE COFFEE IS EXPERTLY BLENDED. The superb Maxwell House blend results from a traditional knowledge and skill of the art of coffee blending.

CANADA PACKERS LIMITED

REPORT TO SHAREHOLDERS

The nineteenth year of Canada Packers Limited closed March 31, 1946. The following is a comparison of operations with those of the preceding year—

Table with financial data: Year Ended March 1946 vs March 1945. Includes Sales, Profits, and Assets.

The share structure of the Company is: 400,000 'A' Shares, 800,000 'B' Shares.

The table below sets forth the record of the year's operations in terms of Sales. For each Dollar of Sales there was paid:

The operations of the Packing Industry are of importance to all groups of the community. Inasmuch as meat is an essential food, the welfare of all citizens is involved.

The result has been that, at the present time, Cattle marketings are at an all-time high, whereas Hog marketings for the first seven months of 1946, while still 46% above those of 1939, are 54% below the peak of 1944.

Canada's contribution has been substantial. She has curtailed (by rationing) her consumption of certain foods—especially those which have been shipped to Great Britain and Europe.

Examined in this table reveals a striking divergence of trend in between Cattle and Hog deliveries. In the early war years, Hog marketings increased rapidly:

Following 1944, a decline set in. In 1935 the decline was 3,082,000 Hogs—35%. This decline has continued in 1946.

By 1944 the increase (as compared to 1939) was 55%. However, in 1945 inspected slaughtering of Cattle reached an all-time high.

Canada Farmers were urged to produce every Hog possible. A further factor counted heavily. On Canadian farms, and in Canadian elevators, was stored a vast quantity of grain.

By 1944 the farmer was feeling the strain of the war effort. In response to constant appeals, he had enormously increased production, in spite of the fact that farm manpower had been reduced more than 20 per cent.

The result has been that, at the present time, Cattle marketings are at an all-time high, whereas Hog marketings for the first seven months of 1946, while still 46% above those of 1939, are 54% below the peak of 1944.