

## World's Toughest Tunneling Job

The staccato roar of a powerful diesel engine, interrupted at regular intervals by deafening explosions, has formed the uneasy background to the sleeping and waking hours of the townfolk of Chamonix, the French ski resort, for some time now. The deafening blasts shake the country for miles around.

And the residents have resigned themselves to the fact that they will have to live with it until 1963 at least.

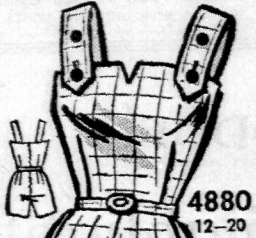
That is the estimated time of completion of what experts have called "the toughest job on earth," the drilling of the world's longest road tunnel under the towering, craggy peaks of the mountain that dominates the border of France and Italy.

The purpose of the seven-mile tunnel, which can only be rivalled in its successful completion by the much-vaunted but not yet begun Channel Tunnel, is to cut the road distance between France and Italy.

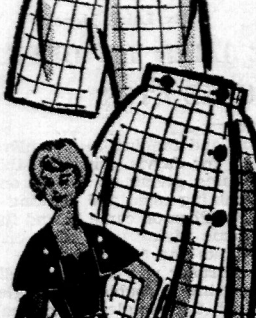
It will also provide a covered highway that can be used throughout the bitter winter that transforms the dizzy precipices and spiralling roads of Mont Blanc into a permanent dead trap.

This \$35,000,000 enterprise is only being accomplished through

## Button-on Magic PRINTED PATTERN



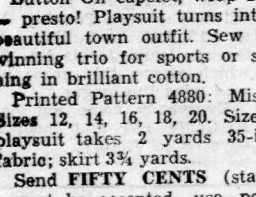
4880 12-20



4880 12-20



4880 12-20



4880 12-20



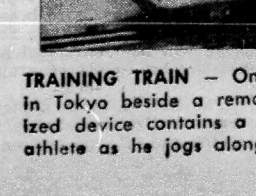
4880 12-20



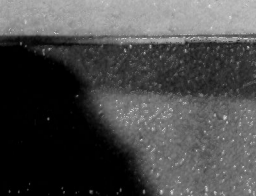
4880 12-20



4880 12-20



4880 12-20



4880 12-20

## Modern Etiquette

By Anne Ashley

Q. If one wishes to give a very good woman friend an engagement gift, should this be something for her personal use or for her future home?

A. Either is correct.

Q. Should the used silverware be gathered up before removing the plates from the dinner table?

A. No; the silver should be left on the plates, and all removed from the table together.

Q. Will you please mention some of the duties of the best man at a wedding?

A. The best man looks after the bridegroom, generally driving him to the church. He takes care of the ring, giving it to the bridegroom at the proper moment in the ceremony. He gives the bride away.

Q. Is it considered proper to furnish paper napkins to guests at meals in one's home?

A. Although this was at one time considered out-of-the-question, nowadays for all informal entertaining, paper napkins are not only perfectly proper, but very practical as well.

Q. When placing the chairs for dinner, just how far under the table should they be pushed?

A. The front edge of the chair should be in a perpendicular line with the edge of the table.

Q. We have just recently moved into a new neighborhood, and some of our neighbors have been kind enough to call on us. How should these calls be returned?

A. Within two weeks, or thereabouts. Failure to return these calls would indicate to your neighbors that their friendship means nothing.

Q. What is the proper way to handle a guest who is late for a dinner party?

A. The hostess should greet the guest as if he or she had arrived on time, and not make a scene.

Q. How should one handle a guest who is too drunk to drive home?

A. The hostess should arrange for a taxi or a driver to take the guest home safely.

Q. What is the proper way to handle a guest who is too tired to stay the night?

A. The hostess should arrange for a taxi or a driver to take the guest home safely.

Q. How should one handle a guest who is too sick to stay the night?

A. The hostess should arrange for a taxi or a driver to take the guest home safely.

## Fun to Crochet

By Laura M. Williams

Q. I am a beginner in crochet. Can you give me some tips on how to get started?

A. Start with a simple pattern, such as a square or rectangle. Use a large hook and thick yarn to make it easier to see the stitches.

Q. How do I make a chain stitch?

A. Hold the yarn in your left hand and the hook in your right hand. Insert the hook into the yarn, pull it through, and repeat the process.

Q. How do I make a single crochet stitch?

A. Insert the hook into the chain stitch, pull the yarn through, and repeat the process.

Q. How do I make a double crochet stitch?

A. Insert the hook into the chain stitch, pull the yarn through, and repeat the process.

Q. How do I make a treble crochet stitch?

A. Insert the hook into the chain stitch, pull the yarn through, and repeat the process.

Q. How do I make a picot stitch?

A. Insert the hook into the chain stitch, pull the yarn through, and repeat the process.

Q. How do I make a shell stitch?

A. Insert the hook into the chain stitch, pull the yarn through, and repeat the process.

Q. How do I make a cable stitch?

A. Insert the hook into the chain stitch, pull the yarn through, and repeat the process.

Q. How do I make a lace stitch?

A. Insert the hook into the chain stitch, pull the yarn through, and repeat the process.

## Chronicles of a Ginger Farm

By Gwendoline P. Clarke

Q. I am a beginner in ginger farming. Can you give me some tips on how to get started?

A. Start with a simple pattern, such as a square or rectangle. Use a large hook and thick yarn to make it easier to see the stitches.

Q. How do I make a chain stitch?

A. Hold the yarn in your left hand and the hook in your right hand. Insert the hook into the yarn, pull it through, and repeat the process.

Q. How do I make a single crochet stitch?

A. Insert the hook into the chain stitch, pull the yarn through, and repeat the process.

Q. How do I make a double crochet stitch?

A. Insert the hook into the chain stitch, pull the yarn through, and repeat the process.

Q. How do I make a treble crochet stitch?

A. Insert the hook into the chain stitch, pull the yarn through, and repeat the process.

Q. How do I make a picot stitch?

A. Insert the hook into the chain stitch, pull the yarn through, and repeat the process.

Q. How do I make a shell stitch?

A. Insert the hook into the chain stitch, pull the yarn through, and repeat the process.

Q. How do I make a cable stitch?

A. Insert the hook into the chain stitch, pull the yarn through, and repeat the process.

Q. How do I make a lace stitch?

A. Insert the hook into the chain stitch, pull the yarn through, and repeat the process.

## Should Stick to Cartooning, Maybe?

By John H. Bly

Q. I am a cartoonist. Can you give me some tips on how to get started?

A. Start with a simple pattern, such as a square or rectangle. Use a large hook and thick yarn to make it easier to see the stitches.

Q. How do I make a chain stitch?

A. Hold the yarn in your left hand and the hook in your right hand. Insert the hook into the yarn, pull it through, and repeat the process.

Q. How do I make a single crochet stitch?

A. Insert the hook into the chain stitch, pull the yarn through, and repeat the process.

Q. How do I make a double crochet stitch?

A. Insert the hook into the chain stitch, pull the yarn through, and repeat the process.

Q. How do I make a treble crochet stitch?

A. Insert the hook into the chain stitch, pull the yarn through, and repeat the process.

Q. How do I make a picot stitch?

A. Insert the hook into the chain stitch, pull the yarn through, and repeat the process.

Q. How do I make a shell stitch?

A. Insert the hook into the chain stitch, pull the yarn through, and repeat the process.

Q. How do I make a cable stitch?

A. Insert the hook into the chain stitch, pull the yarn through, and repeat the process.

Q. How do I make a lace stitch?

A. Insert the hook into the chain stitch, pull the yarn through, and repeat the process.

## Modern Etiquette

By Anne Ashley

Q. If one wishes to give a very good woman friend an engagement gift, should this be something for her personal use or for her future home?

A. Either is correct.

Q. Should the used silverware be gathered up before removing the plates from the dinner table?

A. No; the silver should be left on the plates, and all removed from the table together.

Q. Will you please mention some of the duties of the best man at a wedding?

A. The best man looks after the bridegroom, generally driving him to the church. He takes care of the ring, giving it to the bridegroom at the proper moment in the ceremony. He gives the bride away.

Q. Is it considered proper to furnish paper napkins to guests at meals in one's home?

A. Although this was at one time considered out-of-the-question, nowadays for all informal entertaining, paper napkins are not only perfectly proper, but very practical as well.

Q. When placing the chairs for dinner, just how far under the table should they be pushed?

A. The front edge of the chair should be in a perpendicular line with the edge of the table.

Q. We have just recently moved into a new neighborhood, and some of our neighbors have been kind enough to call on us. How should these calls be returned?

A. Within two weeks, or thereabouts. Failure to return these calls would indicate to your neighbors that their friendship means nothing.

Q. What is the proper way to handle a guest who is late for a dinner party?

A. The hostess should greet the guest as if he or she had arrived on time, and not make a scene.

Q. How should one handle a guest who is too drunk to drive home?

A. The hostess should arrange for a taxi or a driver to take the guest home safely.

Q. What is the proper way to handle a guest who is too tired to stay the night?

A. The hostess should arrange for a taxi or a driver to take the guest home safely.

Q. How should one handle a guest who is too sick to stay the night?

A. The hostess should arrange for a taxi or a driver to take the guest home safely.

## Fun to Crochet

By Laura M. Williams

Q. I am a beginner in crochet. Can you give me some tips on how to get started?

A. Start with a simple pattern, such as a square or rectangle. Use a large hook and thick yarn to make it easier to see the stitches.

Q. How do I make a chain stitch?

A. Hold the yarn in your left hand and the hook in your right hand. Insert the hook into the yarn, pull it through, and repeat the process.

Q. How do I make a single crochet stitch?

A. Insert the hook into the chain stitch, pull the yarn through, and repeat the process.

Q. How do I make a double crochet stitch?

A. Insert the hook into the chain stitch, pull the yarn through, and repeat the process.

Q. How do I make a treble crochet stitch?

A. Insert the hook into the chain stitch, pull the yarn through, and repeat the process.

Q. How do I make a picot stitch?

A. Insert the hook into the chain stitch, pull the yarn through, and repeat the process.

Q. How do I make a shell stitch?

A. Insert the hook into the chain stitch, pull the yarn through, and repeat the process.

Q. How do I make a cable stitch?

A. Insert the hook into the chain stitch, pull the yarn through, and repeat the process.

Q. How do I make a lace stitch?

A. Insert the hook into the chain stitch, pull the yarn through, and repeat the process.

## Chronicles of a Ginger Farm

By Gwendoline P. Clarke

Q. I am a beginner in ginger farming. Can you give me some tips on how to get started?

A. Start with a simple pattern, such as a square or rectangle. Use a large hook and thick yarn to make it easier to see the stitches.

Q. How do I make a chain stitch?

A. Hold the yarn in your left hand and the hook in your right hand. Insert the hook into the yarn, pull it through, and repeat the process.

Q. How do I make a single crochet stitch?

A. Insert the hook into the chain stitch, pull the yarn through, and repeat the process.

Q. How do I make a double crochet stitch?

A. Insert the hook into the chain stitch, pull the yarn through, and repeat the process.

Q. How do I make a treble crochet stitch?

A. Insert the hook into the chain stitch, pull the yarn through, and repeat the process.

Q. How do I make a picot stitch?

A. Insert the hook into the chain stitch, pull the yarn through, and repeat the process.

Q. How do I make a shell stitch?

A. Insert the hook into the chain stitch, pull the yarn through, and repeat the process.

Q. How do I make a cable stitch?

A. Insert the hook into the chain stitch, pull the yarn through, and repeat the process.

Q. How do I make a lace stitch?

A. Insert the hook into the chain stitch, pull the yarn through, and repeat the process.

## Should Stick to Cartooning, Maybe?

By John H. Bly

Q. I am a cartoonist. Can you give me some tips on how to get started?

A. Start with a simple pattern, such as a square or rectangle. Use a large hook and thick yarn to make it easier to see the stitches.

Q. How do I make a chain stitch?

A. Hold the yarn in your left hand and the hook in your right hand. Insert the hook into the yarn, pull it through, and repeat the process.

Q. How do I make a single crochet stitch?

A. Insert the hook into the chain stitch, pull the yarn through, and repeat the process.

Q. How do I make a double crochet stitch?

A. Insert the hook into the chain stitch, pull the yarn through, and repeat the process.

Q. How do I make a treble crochet stitch?

A. Insert the hook into the chain stitch, pull the yarn through, and repeat the process.

Q. How do I make a picot stitch?

A. Insert the hook into the chain stitch, pull the yarn through, and repeat the process.

Q. How do I make a shell stitch?

A. Insert the hook into the chain stitch, pull the yarn through, and repeat the process.

Q. How do I make a cable stitch?

A. Insert the hook into the chain stitch, pull the yarn through, and repeat the process.

Q. How do I make a lace stitch?

A. Insert the hook into the chain stitch, pull the yarn through, and repeat the process.

## Modern Etiquette

By Anne Ashley

Q. If one wishes to give a very good woman friend an engagement gift, should this be something for her personal use or for her future home?

A. Either is correct.

Q. Should the used silverware be gathered up before removing the plates from the dinner table?

A. No; the silver should be left on the plates, and all removed from the table together.

Q. Will you please mention some of the duties of the best man at a wedding?

A. The best man looks after the bridegroom, generally driving him to the church. He takes care of the ring, giving it to the bridegroom at the proper moment in the ceremony. He gives the bride away.

Q. Is it considered proper to furnish paper napkins to guests at meals in one's home?

A. Although this was at one time considered out-of-the-question, nowadays for all informal entertaining, paper napkins are not only perfectly proper, but very practical as well.

Q. When placing the chairs for dinner, just how far under the table should they be pushed?

A. The front edge of the chair should be in a perpendicular line with the edge of the table.

Q. We have just recently moved into a new neighborhood, and some of our neighbors have been kind enough to call on us. How should these calls be returned?

A. Within two weeks, or thereabouts. Failure to return these calls would indicate to your neighbors that their friendship means nothing.

Q. What is the proper way to handle a guest who is late for a dinner party?

A. The hostess should greet the guest as if he or she had arrived on time, and not make a scene.

Q. How should one handle a guest who is too drunk to drive home?

A. The hostess should arrange for a taxi or a driver to take the guest home safely.

Q. What is the proper way to handle a guest who is too tired to stay the night?

A. The hostess should arrange for a taxi or a driver to take the guest home safely.

Q. How should one handle a guest who is too sick to stay the night?

A. The hostess should arrange for a taxi or a driver to take the guest home safely.

## Fun to Crochet

By Laura M. Williams

Q. I am a beginner in crochet. Can you give me some tips on how to get started?

A. Start with a simple pattern, such as a square or rectangle. Use a large hook and thick yarn to make it easier to see the stitches.

Q. How do I make a chain stitch?

A. Hold the yarn in your left hand and the hook in your right hand. Insert the hook into the yarn, pull it through, and repeat the process.

Q. How do I make a single crochet stitch?

A. Insert the hook into the chain stitch, pull the yarn through, and repeat the process.

Q. How do I make a double crochet stitch?

A. Insert the hook into the chain stitch, pull the yarn through, and repeat the process.

Q. How do I make a treble crochet stitch?

A. Insert the hook into the chain stitch, pull the yarn through, and repeat the process.

Q. How do I make a picot stitch?

A. Insert the hook into the chain stitch, pull the yarn through, and repeat the process.

Q. How do I make a shell stitch?

A. Insert the hook into the chain stitch, pull the yarn through, and repeat the process.

Q. How do I make a cable stitch?

A. Insert the hook into the chain stitch, pull the yarn through, and repeat the process.

Q. How do I make a lace stitch?

A. Insert the hook into the chain stitch, pull the yarn through, and repeat the process.

## Chronicles of a Ginger Farm

By Gwendoline P. Clarke

Q. I am a beginner in ginger farming. Can you give me some tips on how to get started?

A. Start with a simple pattern, such as a square or rectangle. Use a large hook and thick yarn to make it easier to see the stitches.

Q. How do I make a chain stitch?

A. Hold the yarn in your left hand and the hook in your right hand. Insert the hook into the yarn, pull it through, and repeat the process.