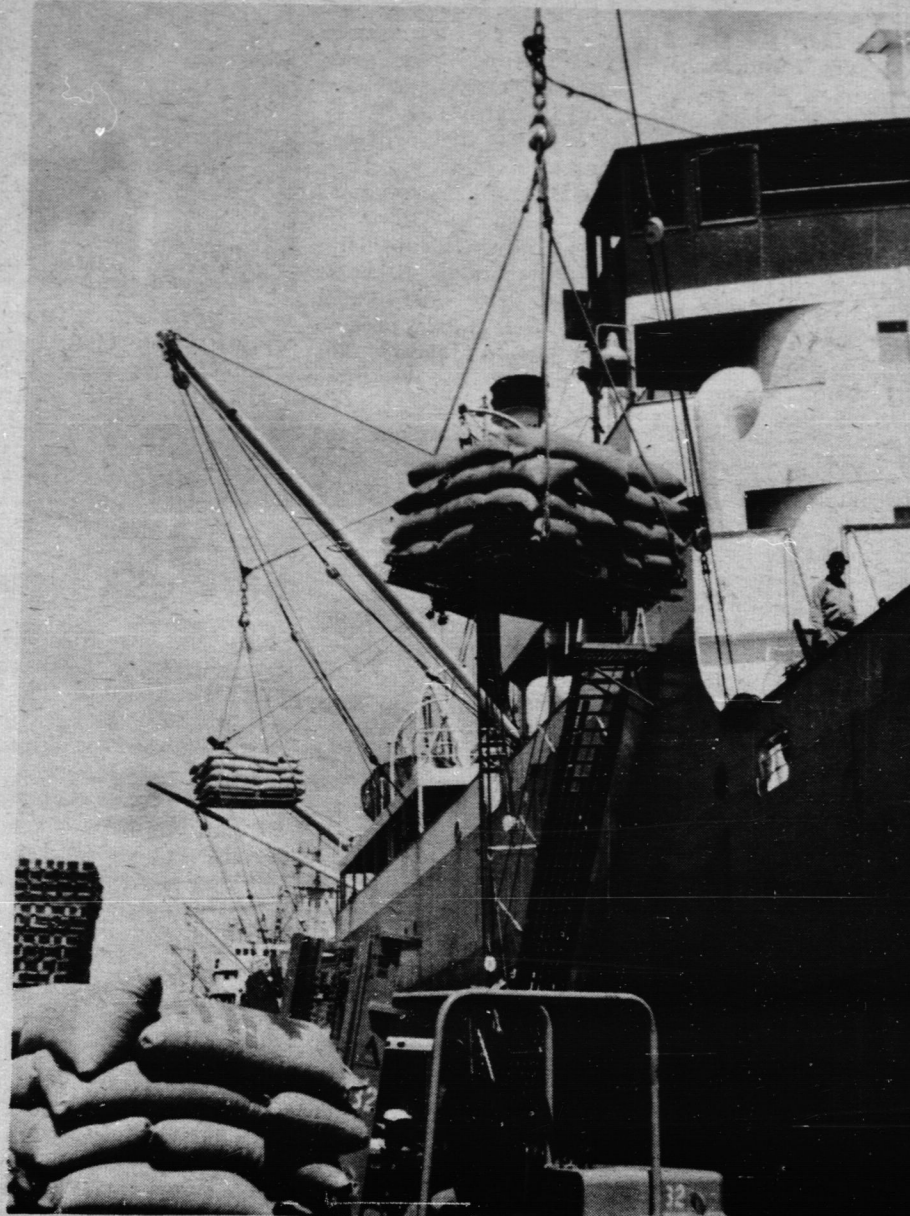


The Jarvis Record

Vol. 91 No. 32

Jarvis, Ontario, August 7, 1969

10c a copy



200,000 bus. of corn for Senegal is loaded into the S.S. Snikolas (of Panama) at the Terminal Warehouse, Hamilton Harbour, Hamilton. The corn was sold to the Canadian Government, by United Co-operatives of Ontario, for the International Aid Program.

On The Farm Front

J. C. Sutton and S. G. the wheat is to be fed to Fustley, Botany Department, cattle. At the moment the Guelph, have had a look at the discoloured oats and one. Each year at this time barley that are fairly common livestock feeders are in the county. So far they do reminded that as should be not have any disease the case any time of the year, identified. They would changes in feeds should be suggest that "the symptoms gradual.

are probably associated with the unusually wet soil Committee has now finalized its plans for the Competition to be held at Caledonia Fair on Friday, September 26th.

"Inadequate drainage in many fields along with late planting may have aggravated the situation."

Robin Daynard, Agricultural Engineer for Haldimand and Wentworth Counties, has started his tour of duty in Haldimand. Appointments are presently being booked for each Wednesday, starting August 13th. With building plans in particular Robin points out that so much money is at stake that an early discussion should be held so that he can learn the details that he needs to prepare before making the farm visit. Drainage calls will continue as in the past without an interview.

Early reports on the wheat harvest would suggest that because of sprouting we may have a considerable amount of feed wheat to put through livestock this winter.

Obviously there are precautions that must be taken especially if some of

the wheat is to be fed to starting at 6:30 p.m. The committee is expecting a reasonable number of entries but would encourage any girls interested to advise the committee by contacting Robert J. Anderson, R.R. 3, Caledonia, Chairman, or John Pennington, Milk Commission Fieldman, Ontario Department of Agriculture and Food, Cayuga. An early contact would ensure the most training possible.

10,000 At Celebration

CALEDONIA — It could have been the guinea hens in Old MacDonald's Farm.

Or it could have been the horse-pulling contest, antique cars or even Haldimand Dairy Princess Sharon McMorran's drive around the race track in the old steam engine.

Regardless of the reason, the second annual staging of Golden Horseshoe City thrilled its 10,000 weekend visitors.

"SHE WAS a wonderful success," said happy Fred Thompson of R.R. 1, Caledonia, president of the Golden Horseshoe Antique Society which staged the antique show, parade and related entertainment features.

"It seemed to me the crowd enjoyed it. All our helpers from over Ontario were very, very happy," Mr. Thompson said.

The three-day spectacle which began Friday with a

The Department of Municipal Affairs has announced the appointment of Eric Grove as Assistant Study Director of the Haldimand-Norfolk Study.

He will help to prepare a regional development plan and proposals for regional government for the two-county area.

Mr. Grove will have special responsibility for liaison with the Joint Study Committee recently appointed by the two County Councils, as well as with municipal councils, planning boards and other local bodies. His offices will be in the Norfolk County Administration Building in Simcoe and in the Court House in Cayuga.

Until recently, Mr. Grove was the Branch Planner for Central Mortgage and Housing Corporation in Hamilton, and is well acquainted with the Study Area. His home is in Hamilton.

Experimental Farm Tours At Simcoe

A weekend Open House of interest to fruit and vegetable growers will be held at the Ontario Department of Agriculture and Food's Simcoe Horticultural Experiment Station August 9 and 10.

Visitors will be taken on wagon tours of trial plots showing the latest varieties and methods of cultivation of tomatoes, pickling cucumbers, potatoes, sweet corn, and peppers.

Some of the items of interest are plots of the 45 most promising cucumber pickling varieties, potatoes grown without hilling or cultivation, paper mulching for early, high profit vegetables, and field-seeded tomatoes grown for mechanical harvest.

Many new varieties of apple, apricot, peach, plum, and pear are being tested at the Station. Visitors will see virus-free trees for rootstock propagation, strawberries grown without winter mulching, a display of hardy peach varieties, and efficient techniques of fertilizer use in the orchard.

The tours will run from 1:30 to 5:30 p.m. on both days, and research workers at the Station will be on hand to answer questions about fruit and vegetable raising.

More Walpole Land Sold

Study Director Appointed

G.T. Dray New Plant Manager

The Jarvis Record is pleased to announce the hiring of Mr. Geoff T. Dray as their new Production Manager.



Mr. Dray is a native of London, Ontario and originally started in the printing and lithographic field in 1959 with Knowles Lithographing in London. He then moved to Lawson and Jones Ltd. in London where he was in charge of the production of Job Printing.

Since 1963 he has been in the Estimating Department of the same firm.

Mr. Dray is married with two children and expects to move to Jarvis this fall.

He is a member of the 7th Field Squadron of the Royal Canadian Engineers for the past 12 years and has a Centennial Medal. In September of this year he will receive his CD.

Traits of land surrounding the Steel Company of Canada land in Walpole have been sold to real estate firms or investment brokers, it was learned last week.

Walpole Reeve Hugh Greenfield said the sales constitute several hundred acres and rumour has it that it sold for over \$1,000 an acre.

Mr. Greenfield added that the land is zoned agricultural and the township has not been approached by anyone for rezoning.

Nanticoke residents fear the development of satellite towns rather than growth of the present village.

However, Municipality Affairs Minister Darcy McKeough said that satellite in new towns are unlikely for the area. He added that, "next door to a steel company is the worst place for a new town."

Assessment Office For Jarvis

Jarvis will be the site of an assessment sub-office it was learned last week.

The announcement was made at a meeting in Simcoe last week when Municipal Affairs Minister Darcy McKeough held a dialogue session with almost 200 local municipal officials.

Mr. McKeough told the meeting that at least four sub-offices may be needed in the Brant-Haldimand-Norfolk assessment jurisdiction.

The announcement was welcomed by Haldimand and Norfolk officials as they held a negative attitude towards union with Brantford and Brant County in the assessment jurisdiction.

On Jan. first the province will assume responsibility for assessment in preparation for uniform assessment of all municipalities.

Haldimand and Norfolk Officials asked the province to re-classify the two counties as an individual assessment region and requested a sub-office for each county.

Park Attendance Higher Despite Wet Conditions

In spite of the wet spring and soggy condition of the ground in many provincial parks, park visits have increased by approximately 13,000 over last year to a total of 1,217,000 to date, and campsite registrations have increased by approximately 10 per cent again this year to date.

Campsites in parks such as Rondeau have been wet and about 60 of the campsites are presently unusable due to high water.

District park beaches are very narrow due to high water conditions in the Great Lakes and this makes a much more crowded situation on the dry beach area than in former years with lower water in the lakes.

Parking lots in parks such as Holiday Beach, Wheatley, and Long Point have been inundated with water a number of times this year during storms which caused the lake to rise higher than normal and this has resulted in having to refill roads and parking lots in order to keep them usable.

The high water on Ipperwash beach has resulted in very little beach area being left for car parking and, in

order to alleviate this problem, a parking lot is under construction behind the beach on property formerly acquired for this purpose.