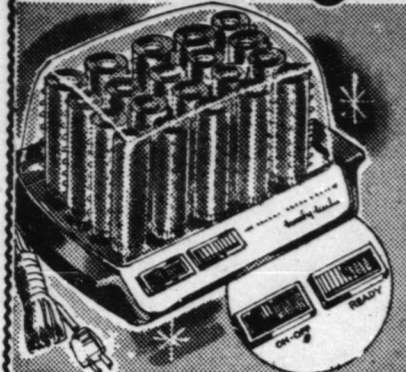


CANADIAN TIRE GIFTS OF BEAUTY



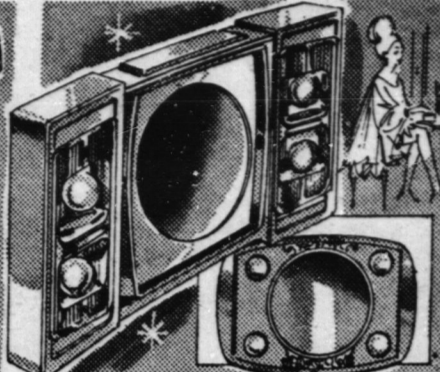
SHE'LL CURL UP IN GLEE with a **20-Curler Set** **16.98**

Set for beauty in minutes! 20 heating posts; 3 sizes of plastic-coated and tipped curlers. Wire clips. Signal and ready lights. Avocado.



FOR BUSY GALS—COMB 'N GO' **Electric Comb** **4.98**

Tease and style hair for instant chic. Thermally-controlled for even heat. Stay-cool handle; 6-foot cord. CSA approved.



LIGHT UP HER BEAUTY with 'SPRITE' **Make-Up Mirror** **14.95**

Mirror swivels from regular to magnifying; 4 reflector-recessed lamps for pro make-up. Venus model with 4 shadow-free bulbs, 8.88



'LADY SCHICK' 'Caprice' Shaver **11.95**

Aid to satiny legs! Water-shaver head. One year guarantee.



PORTABLE 7 1/2-LB 'Lady Torcan' Hair Dryer **21.77**

Cool to hi-heat control. Roomy hood. With retract-control, 24.77



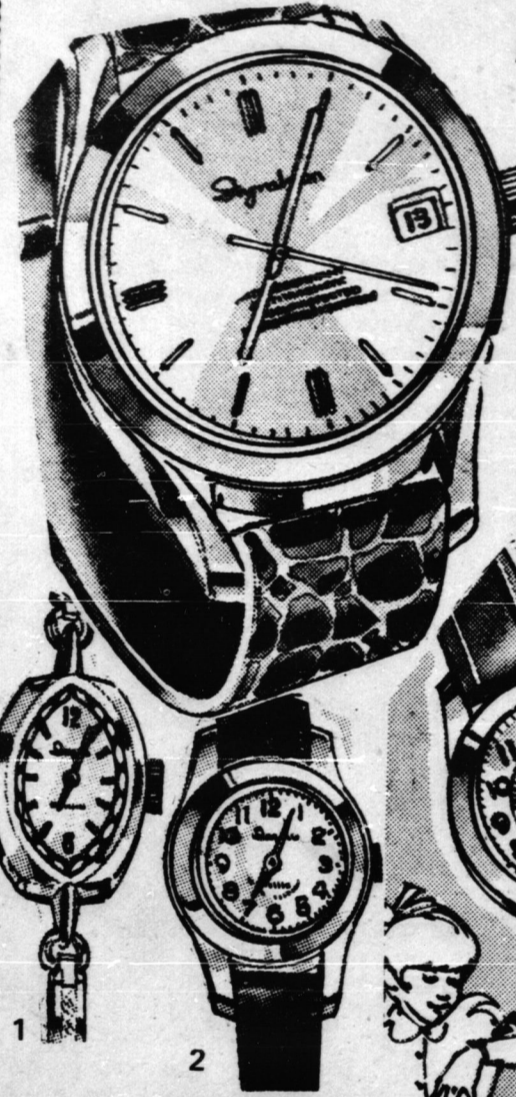
CUT and SAVE! **Handy Home Barber Kit** **10.88**

Clippers, shears, cape, comb, etc. Style-guides and instruction book.



20-Roller Curler Set **24.95**

3 sizes in rollers, matched clips; light weight plastic case.



ALL INGRAHAM WATCHES GUARANTEED FOR 1 YEAR

Daily reminder of your thoughtfulness! Expensive-looking date and time-piece with a lot going for it. 99-7593. Special price!

- Water-resistant gold tone case
- Silver-tone dial, easy to read
- Alligator-grained wrist-strap
- Anti-magnetic; shockproof
- Unbreakable mainspring

8.88

Shopping Spree SPECIAL



SAMSON-DOMINION Hairsetter Vanity Case **29.98**

Lighted make-up mirror; 20 roller hair-set. Elegant case.



GIFT OF COMFORT Hand-Massage Vibrator **15.98**

Dual-coil motor. Limbers, livens hands. White nylon cover.



HAVE C.G.E. CURLERS—WILL TRAVEL 'Carousel' Hairsetter **19.98**

4 medium; 8 large tangle-free rollers; clips. Chrome-ring handle.



18-Roller Hairsetter **29.98**

3 sizes in rollers for hairset or spot curl. Smart case.

TWO ELEGANT STYLES LADIES' INGRAHAM

GOLD COLOR DRESS WATCH 1. Dainty wee one. Golden case, expansion bracelet. Silvery dial, gilt numbers. 99-7707

8.88

BLACK STRAP, GOLDEN CASE 2. 'Petite' and chic. Gold color case, white face. Black suede wristband. 99-0230

7.77

TWO UP-TO-MINUTE TYPES Boy's or Girl's Ingraham

Choice of Gold Color or Silver Tone

6.88 EACH

Modern as tomorrow. Sturdy enough to take it whatever the action. Practical gift idea for the youngsters...at a welcome special price! 3. Gold-color, brown leather strap. 99-7703 4. Chrome-case; black leather strap. 99-7595

SKINDIVER-STYLE! Man's Ingraham

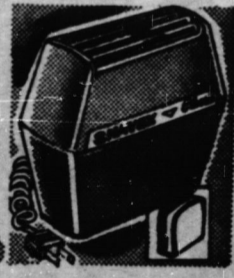
11.88

Calendar watch, scuba-diver style! Water-resistant; luminous dial, hands; rotating bezel elapsed-time indicator. Chrome case black band. 99-7705



SHAVERS—TO 'SIR' WITH LOVE! 'Phillishave' Compact **15.95**

2 micro-groove heads. Cordless. Trim casing. Batteries extra.



'Shave' Classic **14.88**

Surgical-steel blades recoil-cord; brush; powder; zipper-case.



EXTRA! Cash and Carry BONUS COUPONS!

MAIN ST. HAGERSVILLE

OPEN TO 9 P.M. EVERYDAY TO CHRISTMAS EXCEPT SAT. NITE



LIKE SUMMER! Sylvania 'Sun Tan' Kit **7.77**

275-watt bulb/reflector; clamp-on, 6' cord; eye-shields etc.



There Is A Santa Claus

by Doug Galbraith
Yes, there is a Santa Claus. You can't see him, hear him or touch him but he is real. In fact he is one of the things that is real in our world.

All the things that are real we cannot see, hear or touch.

He is a part of the fantasy that has brought about the things we can see hear or touch.

In fact some of the things we take for granted today wouldn't exist if it hadn't been for fantasy. Such things as automobiles, trains and air travel were made

See Page 14, Col. 4

Study Committee Endorsed

CAYUGA Haldimand-Norfolk have endorsed the recommendations of the two-county study committee.

However, the counties have made it clear this must in no way be construed as an endorsement for amalgamation.

A resolution at a Haldimand session Friday stated the endorsement

See Page 11, Col. 4

Weekly Weather

Snow Christmas day and cloudy periods the rest of this week is the regional outlook of the Simcoe Weather Bureau.

Temperatures will be in the high 20s and mid-30s. Lows will be in the mid-20s.



Vol. 92 No. 50 Wednesday, December 23, 1970 10c a copy

Seasons Greetings

Far to the East, a Star shone, and on that first Christmas Eve, its radiance beckoned the Magi to the Miracle of the Manger, there to worship and rejoice in the meaning of His message... "On earth peace, good will toward men." Wherever the wonder of Christmas shires today, may it hearten and inspire us, and may it light the way to peace and joy everlasting. To friends and patrons, many thanks.

Air Jarvis Official Plan

JARVIS - The official plan for this community was unveiled last Thursday. It shows planning for a capacity of 14,000 people. Some 25 people attended the meeting at the Jarvis Community Centre, which included all council members, Clerk Robert Lysch and Matthew H. Kilpatrick, chartered town planner.

Reeve W. E. Austin commented he was disappointed in the crowd that showed for the meeting.

"We held this meeting so we could get some opinion on the official plan. This is a genuine attempt to find out the views of the local public," he said.

Mr. Kilpatrick told the meeting in making the plan the planners had attempted

to find out what was going on in the village itself. "We found that most of the village is situated along Highways 3 and 6.

"The most difficult part of the exercise was to find out how much land is involved. It seemed to me that in the future Highways 3 and 6 would be rerouted.

"In the overall plan we have provided for a capacity residency of 14,000 people," he said.

Under the proposal in the disposal of solid and liquid wastes it was decided the facilities should be approved by the Village, the Medical Officer of Health and the waste management branch of the Department of Energy and Resources as well as the Ontario Water Resources Commission.

Mr. Kilpatrick said that

all expenditures for the growth of the Village should be financed by the municipality as much as possible.

He said that the area designated as the core area would be quite flexible and would take care of the present use of land in that area as well as new uses. The core area takes in most of the land inside the Village along Highways 3 and 6. Also a portion has been set aside for six new public schools as well as a new secondary school.

Open space area connects with areas set aside for schools, which could carry pedestrian traffic. The areas to the north, east and south of the Village have been designated for light industry. All the areas in

between are designated as residential.

In the question and answer period at the meeting it was asked why more of the area that had been designated as industrial had not been located along the railway.

Mr. Kilpatrick answered that he thought that most of the industry that would settle in the Village would be light industry and probably would be easily served by trucks.

The meeting was also used to level some complaints against council.

Clarence Smith of Jarvis told the council he was disappointed the members had been all acclaimed to office for the next term. He was asked if he had shown

See Page 14, Col. 4



Winners of the second annual Hagersville Kinsmen Club Christmas Light Display Contest were announced at a club meeting Monday. Receiving the awards from left Don Brown, most original; Jack Kramer, best interpretation and Frank Whitford, overall affect. Doug Berry, Kinsmen president makes the presentation. The winners were named husband and wife teams. (Staff Photo)