

Bears

OTTAWA — Bears are found in all parts of Canada. They generally breed every second year, permitting the young to remain with the mother for almost two years before they strike out on their own.

Most common is the black bear which inhabits the forested areas from coast to coast. The black bear will eat almost anything. It lives largely on nuts and berries when they are available, will spend hours patiently fishing or turning over stones and old logs to lick up ants and other insects, and will rob a bee's hive or a trapper's food cache with equal relish.

Mating takes place in June or July and 210 days later, while the mother is dened up for the winter in a state of semi-hibernation, hairless twin cubs weighing less than one pound each are born.

The grizzly bear is a larger and much more formidable animal than the black bear. One of the world's largest land carnivores, it will often attack man on sight. Like the black bear, the grizzly will eat almost anything and in the western mountains, where it is found, grizzlies are often seen fishing the streams and feeding on berries. The grizzly dens up for three or four months during the winter and the cubs, usually two, are born during this time.

Throughout much of the year, life for the polar bear is a struggle against the extreme cold, scarcity of food and the dangers of shifting ice floes. Found only in the Arctic regions, the huge carnivore ranges northern coasts and islands. It is equal in size to the grizzly bear, but has a long, slender neck and rather pointed head. It feeds chiefly on seals and fish; however, it can subsist on lemmings and even on moss and berries, when other foods are not available.

The polar bear is white, sometimes with a yellowish cast. The soles of its feet are covered with close-set hairs which give it a secure grip when walking on the ice. It is a powerful swimmer and spends much of its time on drift ice and in the water. Sometimes it is seen at sea miles from the nearest shore. The polar bear has few natural enemies in his home range, although when in the water he generally steers clear of the male walrus whose strong tusks make him a formidable adversary.

The male polar bear is active throughout the year, but in late fall the female chooses a sheltered spot in the icefield and fashions a makeshift den. During the winter months, two cubs are born there, and they remain until spring when they are old enough to accompany their mother on foraging expeditions.

Black bearskins are still used to fashion the striking bushies worn by the Guards regiment on ceremonial occasions. For the most part, however, the principal usage of bearskins of all types is for rugs and wall hangings. On the West Coast, fishermen fashion "flies" for the Pacific salmon from twists of the coarse polar bear hair.

Long Point Bay on the Canadian shore of Lake Erie, nearly opposite the city of Erie, Pa., is famous for its Large and Small Mouth Black Bass Fishing, as well as Ice Fishing during the winter months.

It is one of the few fishing grounds in North America which year in and year out produces prolific catches of this gamest of all game fish.

Practically all types of fishing are employed successfully in the Bay — live bait, spinning, fly-casting and trolling. The angler who has any particular preference can indulge in his hobby with excellent chances of success. In addition to Black Bass, other fish such as Perch, Northern Pike and Walleyes are available.

Long Point Bay is less than 100 miles from the Peace Bridge. Hard-surface highways all the way.

NOTE TO FISHERMEN: Fish packed in ice at any of these Lake Erie ports can be taken home in fine condition by the American visitors.

FISHING LICENCES: Available at all points, individual or family.

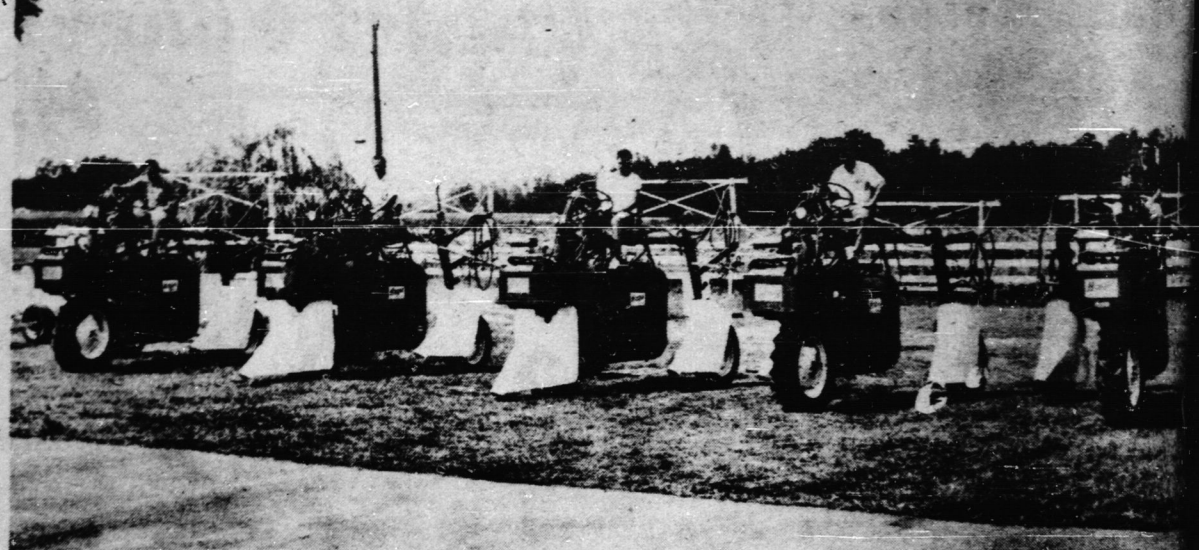
Small Mouth Bass Season opens the last Saturday in June. (Many of the streams in Norfolk County abound with Speckled, Rainbow and Brown Trout).

Boats, fishing equipment etc., may be rented from the different Marinas.



TOBACCO SUCKER CONTROL Service When You Want It!

16
SPRAYERS
For Your
SERVICE



We Will Spray The 1970 Recommended Sucker Control Agent

Delspray

CAN BE SPRAYED AT THE BUTTON STAGE

Spray early before topping — at the bud stage. Increase your tobacco yields by having a better job done. Make your money in 1970 with Delspray T-148 applied by Norfolk Aerial. Place your order early to ensure application at the best time. Application will be on a first call, first served basis.

NOTE: DELSPRAY T-148 WILL BE IN LIMITED SUPPLY IN 1970



NORFOLK AERIAL SPRAYING LIMITED

— R.R. 7 Simcoe at Nixon —
PHONE 426-3487

"WATCH FOR SPECIAL ANNOUNCEMENT"

NEW TOBACCO TWIN

TOBACCO
SUCKER
CONTROL

T & W
LOCKHART
Motor Sales
Limited
Your
Authorized
CHEVROLET
AND
DSMOBILE
DEALER
T. WILLIAMS
Phone
86-3592

How To Save \$\$\$ On Your Vacation

You can return from vacation this year a happier person if you make a good, long look at the way money dribbles away from your wallet on the road.

The Hamilton Mobile Club says one of the biggest vacation mistakes can be made in planning a few simple accommodations. In doing so, you will receive a wider range of accommodations at a price you want to pay and without having to compromise on quality. Also, you will be waiting for when you get there.

It could be to your advantage to take an occasional look at some of the more modest accommodations available. Four books for sale, list a wide range of accommodations suitable for the varying states of the traveler's wallet, and with prices ranging from \$1 and up to \$100 a night from off deluxe.

If you have no interest in events or festivals, you may be taking place in certain areas which you are passing by in mind. Such attractions usually cost more while they are in season. You might wish to consider lodging arrangements less festive but lower in cost.

At times, on the road, there are prime chances for savings. Most have specialty foods which are noted for, and are usually economically priced. Called "truck driver" and "cafeteria" can represent smaller tabs and good food for the money.

Another lunchtime treat which can provide pleasure as well as fuel for the motorist is the roadside diner. Many highways have excellent roadside rest areas with picnic facilities. Plan your sightseeing carefully, to avoid tourist traps. Give close scrutiny to a wary eye — to boyant bill boards touting "musts" for you to visit. You can avoid

many disappointments, and a considerable drain on the billfold, by allowing a reliable guide book to steer you to above-board attractions.

Plan your souvenir buying just as carefully. Purchasing a souvenir which has no identification with the area you are visiting, other than the name, can be a waste of money. Try to picture yourself three weeks hence, and if you see yourself saying, "Why did I ever buy this thing?" — skip it.

The network of turnpikes is a boon for the motorist intent on making fast time from point to point. But the family on vacation can occasionally save substantially, and often enjoy more scenic wonders, by getting off the toll roads and following alternate routes — a practice widely known as "shunpiking."

One final budgetary recommendation: Linger a few days in an area which interests you, rather than remaining constantly on the go.

Deer Creek Dam

The Official Opening of the Deer Creek Dam and Reservoir marks the completion of the largest project yet undertaken by the Big Creek Region Conservation Authority. The dam is located on Deer Creek just over a mile above the junction with Big Creek.

The reservoir is entirely located within the Township of North Walsingham.

The zoned earthfill dam incorporates an ungated overflow crest and a sloping chute spillway of unusual design. Development Road

No. 895, utilizing the dam crest to cross the Deer Creek valley, spans the new spillway via a prestressed concrete bridge and connects Highway 59 with points west.

The Deer Creek project demonstrates the results of co-operation between the

Township which made land available and contributed financially, the County which included the dam with their road and bridge project, and the Conservation Authority which co-ordinated these efforts and was responsible for the total project.



Pick Up'n Go With

fleetwood 71

care-free

PORTABLE T.V.'S

Care-Free reliability with FLEETWOOD'S high Quality manufacturing Standards

Care-Free performance with FLEETWOOD'S Skilled factory trained Service



PORTABLE T.V.s from **120.**

SPECIAL SALE

Now On

FREE

Draws and Refreshments

20" Portable T.V.s

Reg. \$259.95

SALE 175.

ACE T.V.&RECORD BAR

217 Main St.
PORT DOVER
583-2287

Sales
Service
Rentals

Main Street
PORT ROWAN
856-3101