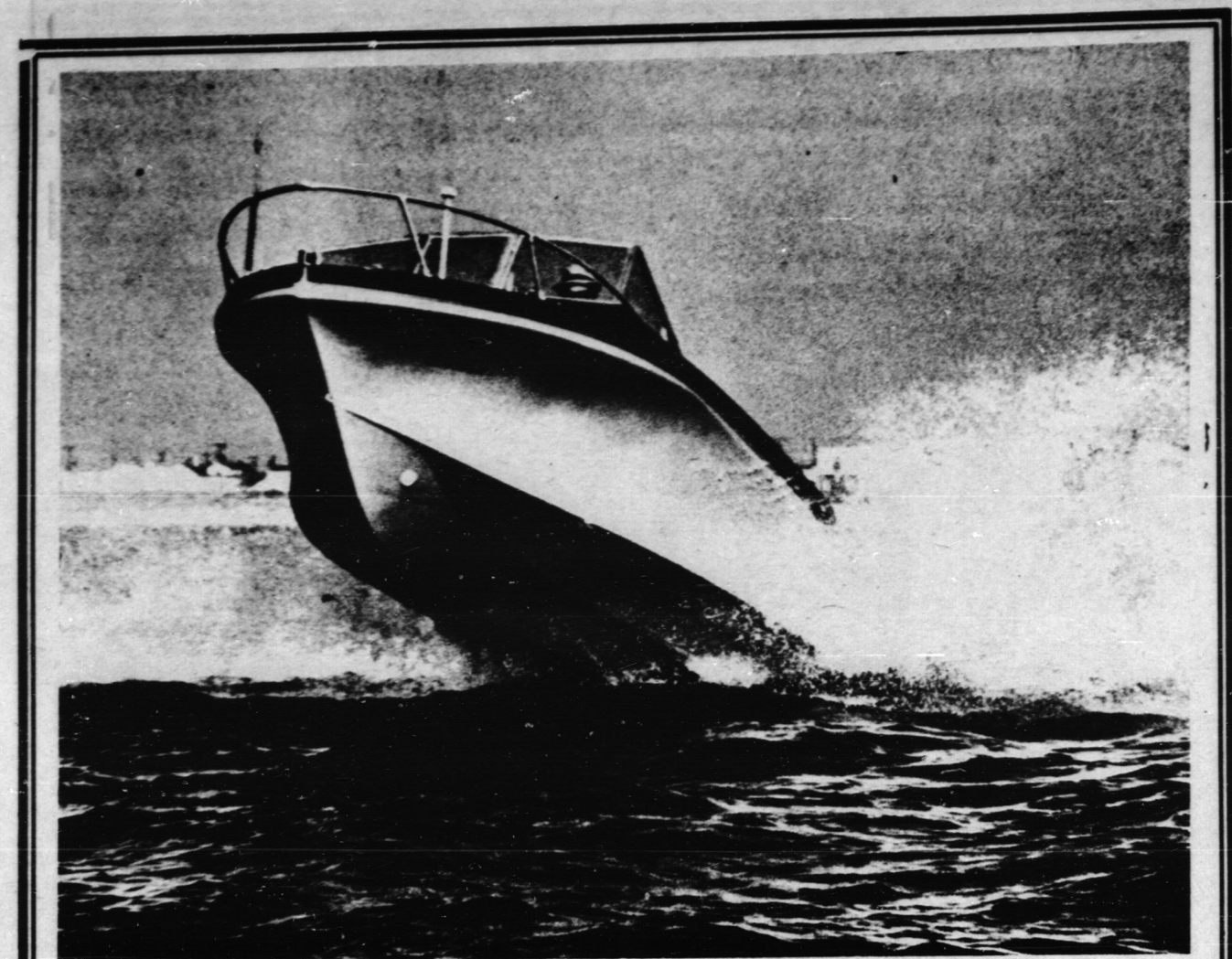


The red fox normally ranges within a ten mile radius of its den.

Just A Spark Could Make It Dark. Remember, only you can prevent forest fires.

The Mountain Aves is the floral emblem of the Northwest Territories.

Birds' feet are shaped to assist them in getting food and in travel.



**WINNER • GLASTRON • SPORT RAY BOATS**  
**EVINRUDE MOTORS**  
**DON HYDE MARINE**  
*"Evinrude Sales & Service"*  
**HAGERSVILLE PHONE 768-3267**



VISIT THE DELHI  
**BELGIAN CLUB**  
**PLAYTIME!**



**BELGIAN DAY**  
**FRIDAY JULY 17th**  
**SOCCER MATCH**  
**BICYCLE RACE**  
**DART TOURNAMENT**  
**ARCHERY**

★ ★ ★ ★ ★  
**DANCE**  
 To The  
**BOOMERANGS**  
 and  
**SHERWOOD**  
 Orchestras

From **8:30 P.M. OPEN HOUSE**



## Pollution Probe Awarded Conservation Grant

MONTREAL — The White Owl Conservation Award Committee voted to give \$2,000 to Pollution Probe in support of "Summer Project '70." The University of Toronto — based organization is the recipient of the first of several conservation grants, ranging from \$1,500 to \$2,500 which will be distributed by the Award Committee this year.

The money will be used to help send a team of university students into the main resort areas of Ontario to study water pollution this summer. Evening discussion groups will be held with cottagers on how best to combat water pollution at camp, on trips, and at the cottage. Meetings will be organized in each local area of all persons with a vested interest in cleaning up the lakes and rivers.

Pollution Probe has had a number of successes in fighting for correction of environmental abuses, among them the Ontario and Canada-wide ban of DDT, and public distribution of the phosphate analyses in detergents.

Dr. Donald Chant, Chairman of the Advisory

Board of Pollution Probe, and also a member of the White Owl Conservation Award Committee, said "I am delighted that the Committee felt Pollution Probe deserved its support." With the exception of Dr. Chant, the Award Committee voted on applications for grants from the Canadian Audubon Society, the Canadian Water Resources Association and a Montreal based group — Citizens for Social Responsibility in Science.

In addition to the conservation grants the Award Committee also decides the winner of the White Owl Conservation Award at the end of each year. Consisting of \$5,000 and a trophy the Award is presented to any individual or organization judged to have contributed the most towards preservation of the Canadian environment. The Award was introduced in 1968 by the General Cigarette Company Limited of Montreal.

Anyone may send in nominations by writing to The White Owl Conservation Award, Suite 1501, 550 Sherbrooke Street West, Montreal 111, Quebec.



Hoovers Marina at Nanticoke, Ontario.



Two small fry looking over the Coast Guard Boat at Port Dover.



## Spacemaker GARDEN PORT



BEST-DESIGN  
 PLYWOOD FLOORS  
 PREFINISHED SHELVES  
 COMPLETE ASSEMBLY  
 INSTRUCTIONS  
 PAINTED INSIDE  
 AND OUT!  
 BONDED VINYL  
 RUST-PROOF COATING  
 SECURITY PADLOCK

#G65 (as illustrated) ... with 173 cu. ft. of storage and 28 sq. ft. of floor space ... a real buy! NOW:

**\$79<sup>88</sup>**

#G67 same style but larger with 241 cu. ft. of storage and 39 sq. ft. of floor space ... a very popular size! WAS: \$114.88

BEAVER SUPER BUY  
 WAS: \$114.88 **\$99<sup>88</sup>**



## PATIO LIGHTS

**5<sup>88</sup>** SET OF 6 COMPLETE



Have a cottage paint party  
**CIL EXTERIOR**  
 Red or Green Paint

**CIL EXTERIOR WHITE**  
 Paint

**INTERIOR LATEX**  
 Soap and Water Clean-up

The best costs  
 less at **BEAVER**

**4<sup>95</sup>** GAL. TAKE HOME  
**5<sup>55</sup>** GAL. TAKE HOME  
**5<sup>29</sup>** GAL. TAKE HOME



ONE COAT WOOD STAINS

**REZ Brand** **7<sup>88</sup>**  
 Cedar or Redwood

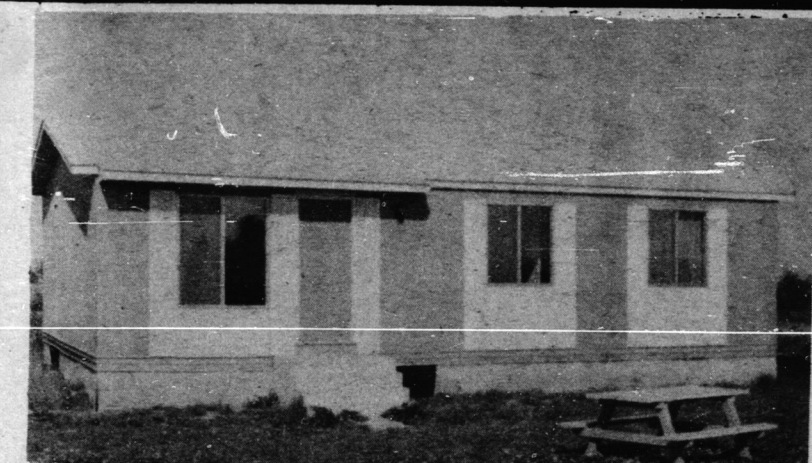
**BEAVER Brand** **9<sup>95</sup>**  
 Cedar or Redwood

**CONCRETE MIX \$1.98**  
**MORTAR MIX \$1.98**  
**SAND MIX \$1.98**



**BEAVER**

PORT ROWAN **LUMBER** PHONE 586-2104



This Home For  
**SALE**  
**\$10,000.**

Alcan House Presently Situated  
 At Overbaugh Service Station

59 Highway and Port Rowan entrance to  
**LONG POINT**

"Will move to your lot and foundation within  
 20 mile radius"

TO BE FINISHED BY PURCHASER  
 Includes Hot Water Tank and Furnace.

DO NOT MISS THIS ONCE IN A LIFETIME OPPORTUNITY.

CONTACT

**TROTTER INVESTMENTS LTD.**

TILLSONBURG PHONE 842-8863

or Mrs. Pete Overbaugh Port Rowan 586-3902