

Safer Boating Practices

Studies indicate that, although inexperienced boat operators are responsible for many mishaps on our waters, a majority of accidents are caused by thoughtlessness on the part of seasoned skippers. A thorough knowledge of what constitutes good seamanship is not a complete guarantee against emergencies. While these are important factors in assuring greater safety afloat, they cannot take the place of constant awareness of the "unwritten rules" of common sense and courtesy, the common denominators of safe boating. A combination of both is essential.

OVERLOADING AND OVERPOWERING

Overloading is one of the big faults of small boat operators and one of the major causes of boating accidents.

The maximum load and horsepower should not exceed that recommended on the DOT capacity plate where it is required to be shown.

One simple rule: if the boat looks overloaded, it probably is. In smaller craft, never overload. Be sure to balance the load properly and do not change seating positions when underway.

And, if the water is rough, stay on shore.

OVERLOADING OF ROWBOATS

Overloading is dangerous. Because there are so many types of small boats, specific advice to cover all contingencies about overloading is not practical.

How many people can be safely carried depends on several factors: type of boat, distribution of passengers and other equipment to be carried, etc. Common sense should rate highly here.

The Ministry of Transport issues, as a rough guide only, the following notice for posting at holiday resorts, boat hiring stations and camp sites.

Boat Length	No. of persons	Weight Load
10'	2	410lbs
12'	3	575lbs
14'	4	740lbs
16'	5	975lbs

For rough water conditions it would be advisable to remove one person from the boat before starting out. However, common sense should dictate whether the boat should be put out at all in bad weather, and this is particularly applicable to boats under 10 feet in length which may be suitable for operation only in calm conditions.

OVERLOADING AND OVERPOWERING OF POWER BOATS

Although the above rules may be considered as a guide to the loading of rowboats, they do not apply when a motor is attached to the boat. It is particularly important that an inexperienced person should be careful when attaching his motor to a hired boat. Concentrating on starting his motor, he frequently ignores the rudder position so that the quick turn, made by the boat on starting, results in a capsizing.

The desirability of having a sound recommendation on the loading and powering of small outboard boats is of such importance that this is

now required by regulations.

SAFETY EQUIPMENT

Power boats and sailing craft not over 18 feet in length must, in accordance with Small Vessel Regulations, have on board an approved DOT lifejacket or lifesaving cushion for each person aboard, two oars and rowlocks or two paddles and a bailing bucket or manual pump. Navigation lights are required for operation after dark. This safety equipment is also recommended for rowboats and canoes.

If the boat is equipped with an inboard motor, permanently fixed or built-in fuel tanks or a cooking or heating appliance that burns liquid or gaseous fuel, one Class B1 fire extinguisher is required.

On boats over 18 feet in length the safety equipment required is listed in "BOATING SAFETY GUIDE", published by the Department of Transport, Ottawa.

BOAT TRAILER

A car towing a boat trailer can be twice as long

and more difficult to manoeuvre than a car alone. Allow extra distance for stopping, turning and passing. Have ample and effective warning lights and brakes. Be sure the hitch and couplings are strong enough to do the towing job required.

See that the trailer and hitch meet provincial motor vehicle laws. Do not overload and check the trailer before each trip and at regular intervals when travelling.

WATER SKIING

Reckless operation of boats towing skiers is an

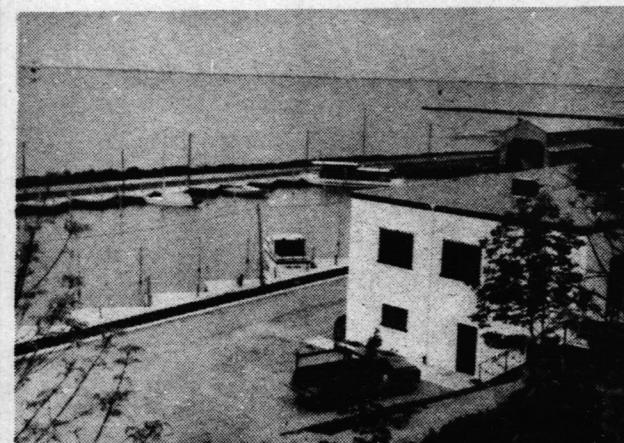
offence under the Criminal Code and could result in a fine up to \$500, and the loss of the privilege of driving a boat for one year.

The chief offences are operating in swimming areas, confined waters too close to shore installations, and too close to boats either moored or under-way.

Failure to have a second responsible person aboard the tow boat to observe the skier and pass on information received from the skier's signals to the boat driver as well as skiing

See Page 11, Col. 6

INNER BAY YACHT CLUB AND PUBLIC DINING LOUNGE



Located at St. Williams, Ont., Canada

Long Point Bay

for location consult Canadian Navigational Chart 2110

Canada Customs at Main Dock

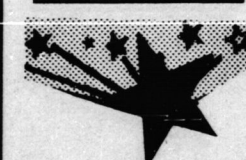
Minimum Water Depth — up to 5' draft

Deep water to accommodate all large cruisers

Phone Area Code 519 - 586-2731

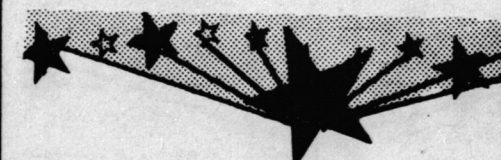
Spacious cruiser dockage facilities each having water and hydro connections.

Overnight Parking Rates 10c Per Foot



DINE IN OUR PUBLIC DINING LOUNGE

Relaxed atmosphere, beautiful decor and excellent food to make your dinner a meal to remember.

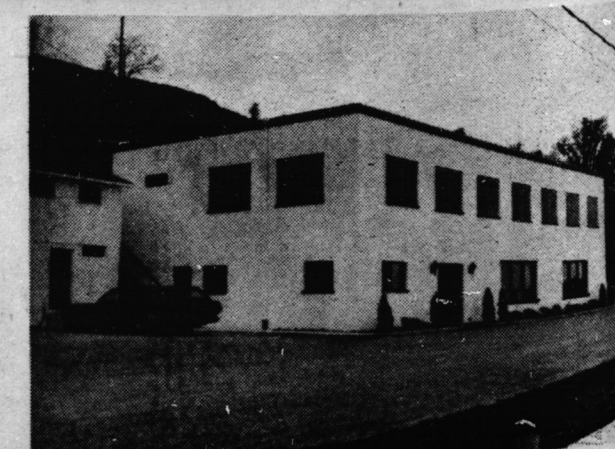


Your party can be made more enjoyable in our new beautiful CLUB HOUSE.

BOOTH'S HARBOUR AND MARINE TERMINAL

St. Williams, Ontario CANADA

PHONE (519) 586-2731



A view of the main building with Club House facilities on second floor.

OUR SERVICES INCLUDE:

Boat Houses
Open Dockage
Mobile Lift
O.W.R.C. Dock Side Pump Out
Fishing Supplies
Esso Gas and Oil
Groceries
Ice Cubes
Public Restrooms and Showers
Marine Supplies
Snack Bar

YOU NAME IT-WE HAVE IT TO MAKE YOUR VACATION MORE PLEASANT



with **LUGGAGE** from —
McBRINE'S - SAMSONITE -
DIONITE and CARSONS
Tote Bags - Sport Bags

MEN'S and LADIES
UTILITY CASES - BEACH BAGS
INSULATED BAGS

BON VOYAGE TRAVEL KITS
CRISIS KITS - INFLATABLE HANGERS

BURT'S LUGGAGE SHOP

(C. C. Colver Ltd.)

20 KENT ST., SIMCOE 426-0636

Citizenship Grant Of \$315,000 To Benefit 3,000 Students

AWA — A federal grant of \$315,000 to fund a one-week summer program in Canada's capital for 3,008 high school students from across Canada announced by Robert

EDUCANADA, will bring a total of 3,060 persons, including 52 travel coordinators, from all the provinces and territories to Ottawa. They will be billeted in specially designed temporary double roomettes in Confederation and Sir Robert Borden high schools of the Carleton Board of Education. The participants will travel to

Ottawa by chartered aircraft and buses.

The EDUCANADA project will be divided into eight seminars or sessions, each of eight days duration, between July 5 and August 31, 1971. Each session, comprising 376 participants, will consist of a comprehensive and extensively managed, fully bilingual program of

educational activities and recreation.

A direct appeal has been made to 2,000 high school principals to assist in the selection of candidates. While any grade ten student without a full-time summer job is eligible, the program is designed for those who have not had a previous opportunity to travel outside of their own province.

"We hope that the students who will be selected are the ones who, for one reason or another, have not been exposed to the educational values afforded by travel," Mr. Stanbury said. "The project is a step in the direction of the government's objectives of national unity and participation among Canadian youth."

The \$315,000 will cover about 85 percent of the cost of return transportation, accommodation, meals and the educational program. Total cost to each student is \$16. EDUCANADA will also provide over 40,000 man-hours or some 100 summer jobs for students.

The participants will be selected as follows: two from the Yukon, five from

the Northwest Territories; 15 from Prince Edward Island, 109 from Newfoundland, 96 from New Brunswick, 110 from Nova Scotia, 157 from

Manitoba, 230 from Alberta, 157 from Saskatchewan, 236 from British Columbia, 901 from Quebec and 1,042 from Ontario, for a total of 3,060.



BEAUTIFUL VIEW ?

PREVENT WILDFIRES
THE VIEW SPOILERS !



WILLS MOTORS (DELHI) LIMITED PHONE 582-1770

CHEVROLET

OLDSMOBILE

CHEVROLET TRUCKS

WILLS MOTORS (DELHI) LIMITED
OPEN WEEKDAY EVENINGS

TIL 8 P.M.

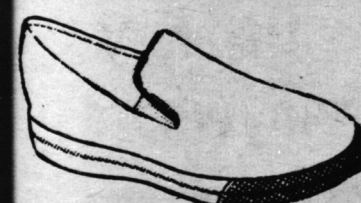
SAT. TIL NOON



Foursome enjoy golf on one of the local courses. (Staff Photo)

SUMMER SHOE SALE

Men's - Women and Children's
RUNNING SHOES



1.29

TRACK SHOES

MEN	WOMEN	CHILDREN
10.48	8.99	8.50
REG. 13.99	REG. 10.99	REG. 9.99

MEN'S, WOMEN'S AND CHILDREN'S
SANDALS FROM 1.00 TO 13.99

All summer colours in Women's Dress Shoes \$5.99 or below. Reg. to \$13.99

NORFOLK SHOE CO.

COLBORNE
ST. SOUTH

OPEN Monday, Tuesday and Thursday 9 a.m. to 6 p.m.
Wednesdays 9 a.m. to 4 p.m. Fridays 9 a.m. to 9 p.m.
Saturdays 8 a.m. to 6 p.m.

SIMCOE

Boating

Continued From Page 10

from one hour after sunset to sunrise are also offences under the Criminal Code.

The Canadian Water Ski Association advises all skiers to wear lifejackets. A jacket of special design for water skiers will provide the greatest protection. Government-approved lifejackets are not designed for water skiing. Ski belts are not recommended but they could keep an unconscious skier on the surface until help arrives.

FIRE EXTINGUISHERS

Fire extinguishers required by Small Vessel Regulations shall be of a type approved for marine use by:

- (1) Underwriters Laboratories, Inc.
- (2) Underwriters Laboratories of Canada, or
- (3) The British Ministry of Transport or Ministry of Civil Aviation.