

## Mass Beauty Forum

"Everything was beautiful tra la" at the mass beauty forum sponsored by Mrs. Omar Phillips, local representative for the mink-oil-based Koscot cosmetics.

**Annual Dessert  
AND  
Card Party  
March 18  
AT 1:30 P.M.  
FISHERVILLE  
Community Center,**

**Admission  
.75 per person**

**Sponsored By  
Fisherville Unit  
of W.H.G.H.A.**

Seventeen representatives from Niagara On the Lake, St. Catharines, Port Dover, and Toronto, assisted Mrs. Phillips in the presentation of these products. Over 100 persons were present to learn how to care and beautify their skin and eyes and were assisted with the methods of make-up.

Hair fashions were displayed and demonstrated and one fashion piece, a door prize, was won by Mrs. John Wardell. Four other prizes were drawn for with Mrs. Marilyn Hess acting as MC.

To entertain those present, the Hagersville Secondary School Concert Band, for whose benefit the "forum" was held, played during the evening. Mr. George Shippey, band master directing.

Coffee and donuts were sold.

The use of the Canadian Legion Hall was donated by the Legion members.

The proceeds of the evening \$137.63 was donated to the Band's European Tour Fund for '72.

The thanks of the band, and the parents club is extended to all who contributed to the success of the evening and especially to Mrs. Phillips, Miss Logan and the representatives of Koscot for their "practical" interest in these young people.

\*\*\*

Last year in more than 1,000 Canadian communities, Red Cross women's groups produced more than 450,000 knitted and sewn articles for use in times of emergency and disaster in Canada and about 26 other countries.



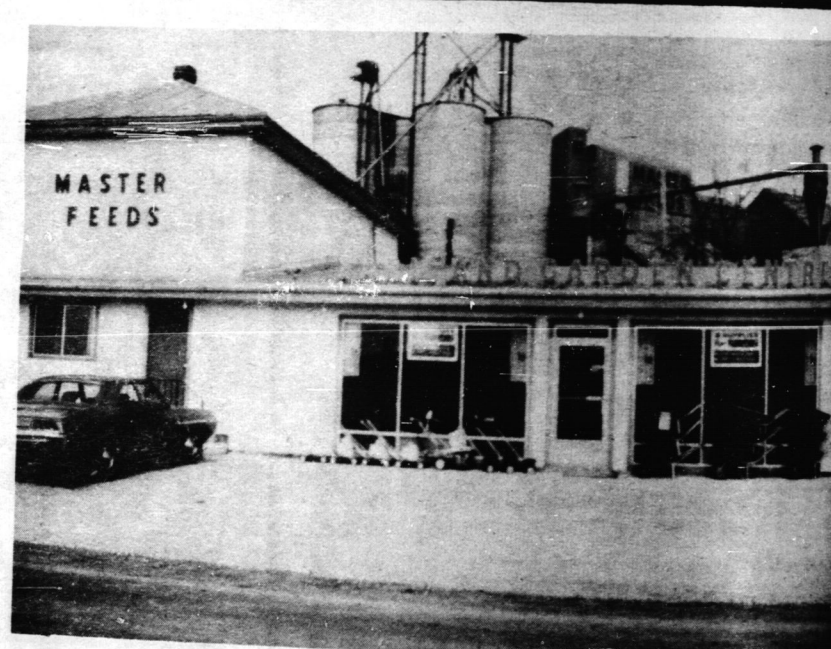
The Canadian Red Cross Society is one of 113 Red Cross, Red Crescent and Red Lion and Sun Societies belonging to the international organization known as the League of Red Cross Societies.

Packed red cells are obtained from whole blood

given to the Canadian Red Cross by volunteer donors. These cells are used as an effective treatment for anaemia.

Platelets are minute cells obtained from whole blood collected by the Canadian Red Cross. They are of vital importance in the treatment of leukemia.

Some 60,000 articles of sickroom equipment are loaned free of charge about 51,000 per year during the past year Red Cross Sickroom Equipment Loan cups



### YOUR HEADQUARTERS FOR

- ... Seed - Fertilizer - Twine
- ... Work Clothes - Rubber Boots - Twine
- ... Dairy Supplies
- ... Lawn & Garden Equipment
- ... Hardware Items - Fence
- ... See our Horseman's Bar from Saddle to Sho

**FAST - FAIR - FRIENDLY SERVICE**

We stock and sell a full line of  
**MASTER FEEDS**  
FULLY PROVEN AT  
MASTER FEEDS FARM

**NELLES CORNERS 779-3455**

## A Decade With Farm Credit Corporation

W. L. Teeple  
The following are some of the sound credit programs that have developed over the years and are available to borrowing farmers from any lender. The Farm Credit Corporation is one of the major sources of farm loans.

The credit primarily for the purpose of that will increase the farmer's income.

It is your ability to manage an enterprise before borrowing funds.

The only credit you can get to operate your farm is from the Farm Credit Corporation.

It is your ability to manage an enterprise before borrowing funds.

It is your ability to manage an enterprise before borrowing funds.

It is your ability to manage an enterprise before borrowing funds.

It is your ability to manage an enterprise before borrowing funds.

It is your ability to manage an enterprise before borrowing funds.

It is your ability to manage an enterprise before borrowing funds.

It is your ability to manage an enterprise before borrowing funds.

It is your ability to manage an enterprise before borrowing funds.

It is your ability to manage an enterprise before borrowing funds.

It is your ability to manage an enterprise before borrowing funds.

It is your ability to manage an enterprise before borrowing funds.

It is your ability to manage an enterprise before borrowing funds.

It is your ability to manage an enterprise before borrowing funds.

It is your ability to manage an enterprise before borrowing funds.

It is your ability to manage an enterprise before borrowing funds.

It is your ability to manage an enterprise before borrowing funds.

It is your ability to manage an enterprise before borrowing funds.

It is your ability to manage an enterprise before borrowing funds.

It is your ability to manage an enterprise before borrowing funds.

It is your ability to manage an enterprise before borrowing funds.

It is your ability to manage an enterprise before borrowing funds.

It is your ability to manage an enterprise before borrowing funds.

It is your ability to manage an enterprise before borrowing funds.

It is your ability to manage an enterprise before borrowing funds.

It is your ability to manage an enterprise before borrowing funds.

It is your ability to manage an enterprise before borrowing funds.

obtain the terms best suited to your purpose, and that the costs are most reasonable. Select a lender who is familiar with your type of farm business, and provide him with all the pertinent information.

Finally, insure your farm business against severe losses of income where possible, to offset the risk of suing credit.

The Federal Crown Corporation created by Parliament in 1959 to succeed the Canadian Farm Loan Board completed ten years of lending and financial advisory services to farmers in 1970. A review of the Corporation's activities during this period reflects the many changes in agriculture and individual farm businesses.

During the last ten years the number of mortgage loans made have increased by 140 percent, and both average size and total investment in mortgage loans have risen sharply.

The Farm Machinery Syndicates Credit Act, introduced in 1964, (also administered by the Corporation) provided

the total demand for long-term credit has decreased from a high in 1967 of about \$5,924,900 to \$4,791,500 extended to December 30, 1970.

We are living in an age when a sound credit program is a must. Be sure to investigate all sources of credit, one of which should be the Farm Credit Corporation.

Headquarters For Weed Control For Farm & Industry

**CHEMICALS**

Complete stock of weed and grass control chemicals used in our area as well as information on their use.

**SPRAYERS**

Dealers for CALSA SPRAYERS—PUMPS, SPRAY GUNS, NOZZLES BOOMS ETC.

**CUSTOM SPRAYING**

4 SPRAYGUN RIGS ON THE ROAD FOR CROP, INDUSTRIAL COMMERCIAL & LAWN & GOLF COURSE SPRAYING.

CONTACT US FOR COMPLETE LAWN SERVICE

• Power Aeration  
• Fertilization  
• Power Rolling  
• Weed Control  
• Grub Spraying  
• Crabgrass Control

Suburban Lawn Services

**PHONE 768-5712**

**HUNTER'S FARM SUPPLY**

**RR 3 HAGERSVILLE**

AMMISSION -- Adults \$1.  
Students 75c  
Children 12 & under 50c

ADMISSION -- Adults \$1.  
Students 75c  
Children 12 & under 50c

ADMISSION -- Adults \$1.  
Students 75c  
Children 12 & under 50c

ADMISSION -- Adults \$1.  
Students 75c  
Children 12 & under 50c

ADMISSION -- Adults \$1.  
Students 75c  
Children 12 & under 50c



Frank and Fred Bergen, 10, whose banjo music was a big boost to the show performed Friday and Saturday nights. (A Record Photo).

**PURINA'S DIRECT WAREHOUSE PLAN  
RALSTON PURINA OF CANADA LTD.**

**HUNTER'S FARM SUPPLY**

ARE PLEASED TO ANNOUNCE THIS NEW SERVICE TO THE AREA FARMERS.

**PURINA'S DIRECT WAREHOUSE PLAN**

WILL MAKE QUALITY PURINA CHOWS AND HEALTH PRODUCTS AVAILABLE AT THE LEAST POSSIBLE COST.

FOR DELIVERY AND PRICING INFORMATION CONTACT **HUNTER'S FARM SUPPLY**

**R.R. 3 HAGERSVILLE 768-5712**

**DEKALB SEED CORN**

Dekalb had high yield in HALDIMAND

Corn Competition as well as taking 3 of the top 5 spots in same tests

**WE CAN SUPPLY FOR THE CORN GROWER —**

- INSECTICIDES

- WEED & GRASS CONTROL

PLANTER PLATES,

TOP YIELDS

More farmers plant DEKALB

Than any other brand

**PURINA CHOWS**

PURINA HEALTH PRODUCTS

SEE ADV. ELSEWHERE FOR FURTHER INFORMATION

**PHONE 768-5712**

**HUNTER'S FARM SUPPLY**

**RR 3 HAGERSVILLE**