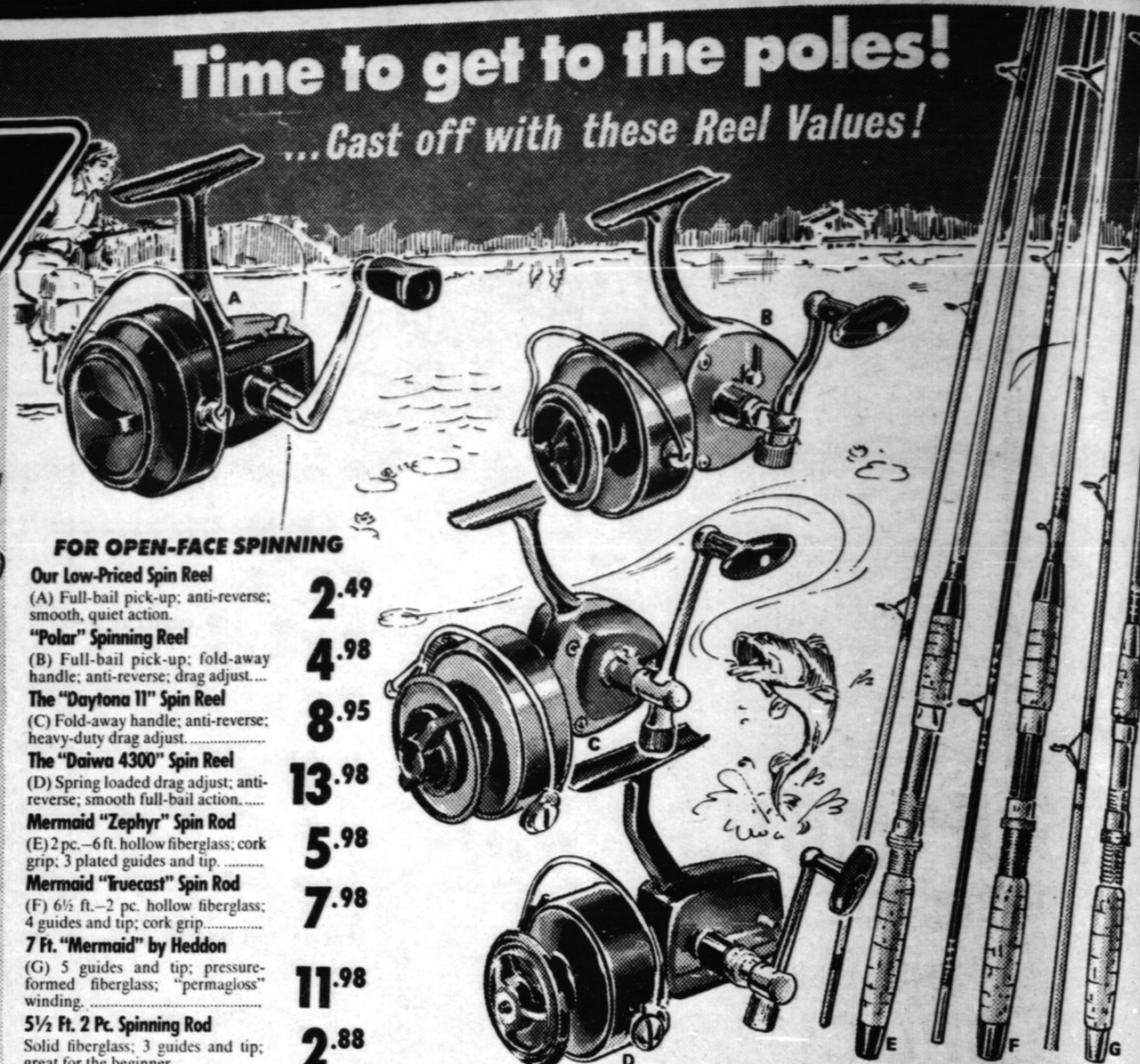




Time to get to the poles!
...Cast off with these Reel Values!

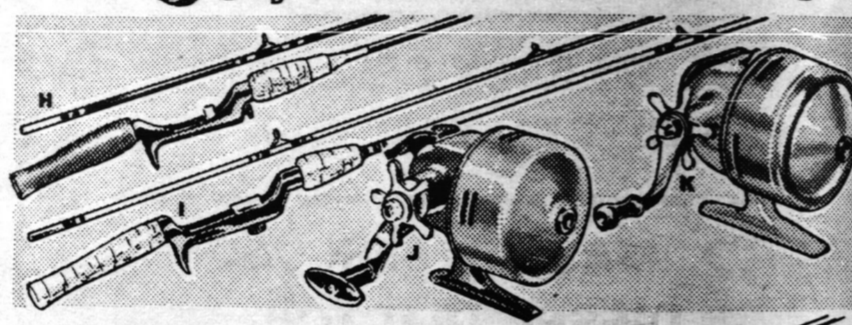


FOR OPEN-FACE SPINNING

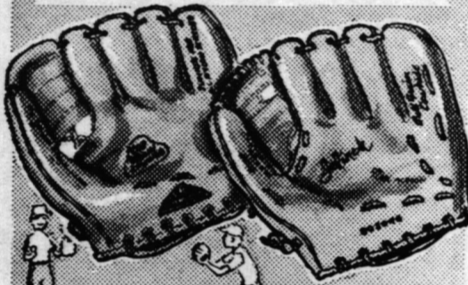
- Our Low-Priced Spin Reel**
(A) Full-ball pick-up; anti-reverse; smooth, quiet action. **2.49**
"Polar" Spin Reel
(B) Full-ball pick-up; fold-away handle; anti-reverse; drag adjust. **4.98**
The "Daytona 11" Spin Reel
(C) Fold-away handle; anti-reverse; heavy-duty drag adjust. **8.95**
The "Daiwa 4300" Spin Reel
(D) Spring loaded drag adjust; anti-reverse; smooth full-ball action. **13.98**
Mermaid "Zephyr" Spin Reel
(E) 2 pc. - 6 ft. hollow fiberglass; cork grip; 3 plated guides and tip. **5.98**
Mermaid "Eucast" Spin Reel
(F) 6 1/2 ft. - 2 pc. hollow fiberglass; 4 guides and tip; cork grip. **7.98**
"Ornam" Spin Reel by Heddon
(G) 5 guides and tip; pressure-formed fiberglass; "permagloss" winding. **11.98**
3 1/2 Ft. 2 Pc. Spinning Rod
(H) Solid fiberglass; 3 guides and tip; great for the beginner. **2.88**

FOR THE SPINCASTER

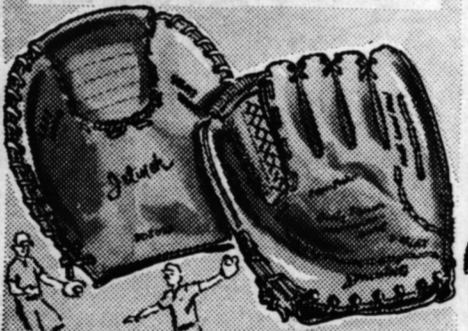
- "Blue Mermaid" Spin-Cast Rod**
(H) 5 1/2 ft. solid blue fiberglass; offset handle; plated guides. **5.29**
Mermaid "Imperial" Spin-Cast Rod
(I) 2 pc. hollow green fiberglass; cork grip; 4 plated guides. **7.98**
"Ornam" Spin-Cast Reel
(J) Star drag; carbonyl pick-up; thumb release action. **5.95**
"Range Finder" Spin-Cast Reel
(K) Patented "memory-loc" for trolling, casting or still fishing. **7.98**



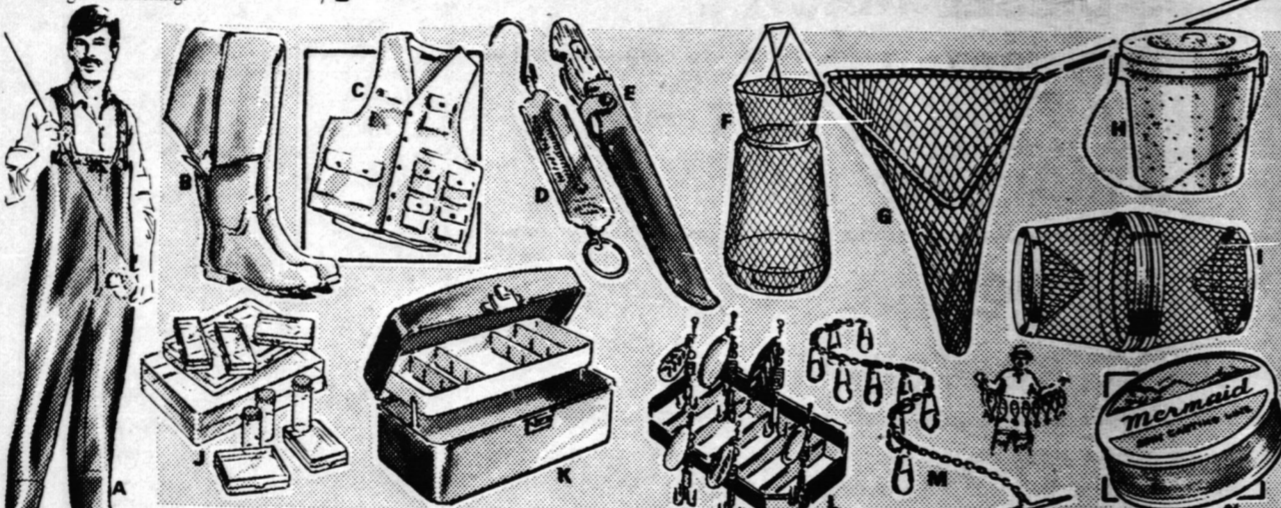
- Batter up!**
"Worth" 11" Softball
(A) Youth's regulation size; tough-stitched leather cover. **1.49**
"Worth" 12" Official Softball **2.49**
Sandlot Hardball
9" official size practice ball. Rubber mar-proof cover. **.69**
"Worth" Leather Covered 9" Hardball **1.49**
Boys' 30" Softball Bat
(B) Solid hardwood by Hespeler. **1.79**
Hespeler Softball Bat
32-33 or 34" solid hardwood. **2.59**
Spalding Hardball Bat
(C) Official 33-34-35" sizes. **2.59**
Hespeler No. 45 Hardball Bat
Sizes 33 to 36". Solid Ash. **3.59**



- Fielder's Choice!**
4-Finger Glove **Leather Glove**
4.29 **7.79**
Junior size; vinyl back; cowhide front; rawhide lacing, L.H. **7.79**
Jelnek full-size; 4-finger, left hand; top-grain leather.



- Deep Trapper 4-Finger Glove**
9.95 **15.95**
For left or right hand use; top-grain leather inside and out; rawhide lace. **10.77**
Spalding's "Pro" model; Soft leather throughout; rawhide lacing. Left or Right.
- "Expo" 4-Finger Glove**
Full size pro-style in right or left. Top-grain cowhide. **10.77**



- Stay dry...these will help you catch 'em, land 'em and keep 'em!**
- Chest-Hi Rubber Waders**
(A) Fabric-backed; sizes 7-12; inner pockets; full suspenders. **14.95**
Hip-Hi Fishing Boots
(B) "Live" cotton backed rubber; adjustable; 6 to 12. **10.77**
Rubberized Fishing Vest
(C) Close-weave cotton; attached creel; 6 pockets. S.M.L. XL. **8.95**
Fisherman's Scale
(D) Rust resistant metal; up to 25 lb. **.59**
- Fish-Filling Knife**
(E) 16" stainless steel blade; Birch handle; leather case. **2.59**
Collapsible Bait Bag
(F) Strong wire mesh; 13 x 18"; folds for storing. **2.89**
"Scoop" Landing Net
(G) Lightweight for fast action; 18 x 18" net; 24" handle. **3.98**
8 Qt. Bait/Minnow Pail
(H) Sturdy polystyrene construction with lid. **.99**
- Folding Minnow Trap**
(I) Strong galvanized mesh; folds for easy storage. **3.59**
Single Tray Tackle Box
(K) Seamless steel; 13 1/2 x 6 1/2 x 4 1/2" high; cantilever. **3.69**
Famous Mepps Spinner Set
(L) 6 assorted Mepps lures with plastic box. **4.69**
Metal Fish Stringer
(M) 8 removable snaps; 5 ft. long; rust-resistant. **1.29**
Monofilament Line
(N) "Mermaid" 6, 8, 10, 15, 20 lb. test on 100 yd spool. **.75 to 1.25**

EXTRA! Cash and Carry BONUS COUPONS



CANADIAN TIRE
ASSOCIATE STORE
HAGERSVILLE

Apply for a **CANADIAN TIRE** Credit Card

PHONE Store
768-3531
OR
Service Centre
768-5910



Vol. 93 No. 18 Thursday May 6, 1971 10c a copy

Ratepayers Object Floodplain Zoning

CAYUGA — Ratepayers here in a floodplain zone are objecting to paying sewage frontage for their homes.

The six delegates who attended the regular meeting of council Monday were told that an Ontario Municipal Board Hearing is scheduled for rate objections, on May 28.

Reeve Ted Powell told the delegation that he believed that every person who benefits by the new sewer line should pay for it. About 12 residents are in the floodplain zone.

One delegate asked, if council would appeal an OMB ruling, if it was ruled that people with land in the floodplain zone didn't have to pay?

Reeve Powell replied that he didn't know what council would do in that case but it probably would abide by the ruling.

At present, the floodplain zoning is only temporary and the OMB will examine the entire question of flood zoning. The OMB will be asked to extend the time limit on the temporary zoning.

Reeve Powell said this will give council enough time to work out a revised floodplain area with the Grand River Conservation Authority.

"We have had two floodplain area maps from the authority but this doesn't mean it is the final floodline," he said.

Delegate after delegate told council that the only way there could be a flood is if there was another hurricane.

One delegate who wants to build a house and is being held up by the refusal of a building permit said "It seems silly to make good building land vacant on the remote possibility of another hurricane."

Mr. Powell said that the only exemption under the sewage frontage payments in the town's bylaws was for vacant land that can't be used for construction.

Port Dover Bridge Open For Traffic May 24?

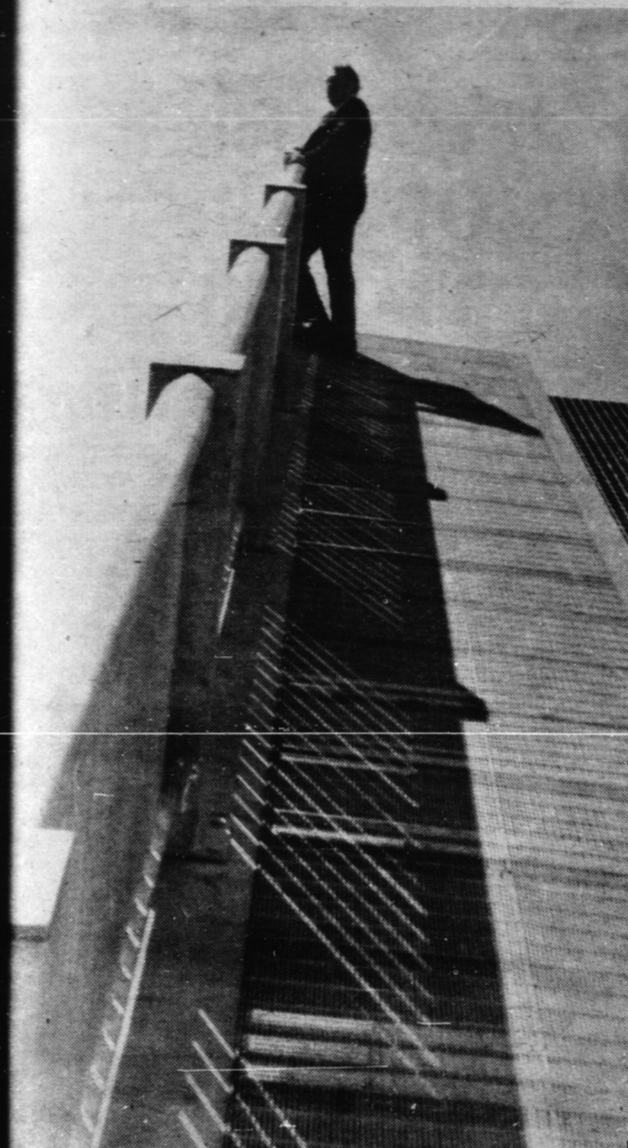
PORT DOVER — A \$1 million bridge problem here may be ended soon.

An Ontario Department of Highways spokesman at the site yesterday said the bridge would be open for traffic May 24.

He said most of the bugs have been taken out of the unique hydraulic bridge.

"Most of the reports on the bridge haven't been correct," he said, "the department's big concern has been the safe operation of the bridge."

"A system has now been installed that makes the bridge work automatically," he said.



bridge that hasn't worked although its price tag is \$1 million may fool everyone by May 24. An Ontario department of Highways spokesman said it will be ending traffic by May 24. (Staff Photo)

The bridge was constructed over the Lynn River 18 months ago but has never been opened to traffic. The cost of the project is estimated at \$1 million.

Last week the bridge was tested with some department vehicles and a truck crossing it.

Vessel Report Station

PORT DOVER — Custom personnel will alternate between Port Dover and St. Williams to man vessel report stations from June 1 to Sept. 30.

This was announced by Custom Officer John McQuillan this week.

The personnel to operate the station are Walter Cooper of Vittoria, Jonathon Murphy of Port Dover and Mark Isber of RR 2, Simcoe.

The stations will be open from 1 p.m. to 9 p.m. Mondays to Fridays and 11 a.m. to 7 p.m. Saturdays and Sundays.

Drivers Escape Injury

JARVIS — Two drivers escaped injury in a crash two miles south of here on Highway 6, Saturday.

Police said Mrs. Joan Fleming, 29, of RR 1, Port Dover and Chislain Francoeur, 23, of Montreal were driving the vehicles.

Damage to the Fleming car was \$50 and \$200 to the other vehicle. Const. Dave Vivian, Simcoe OPP investigated the mishap reported at 7.20 p.m.

EDITORIAL

Sad Tale Economy Lagging Cloisters Oppression = JARVIS

A sad tale of economics seems to be the general beef of the business people surrounding the promised Golden Horseshoe area of Walpole.

Because of land purchases by heavy industry scheduled to locate on the north shore of Lake Erie it appears as a no man's land with a good number of abandoned farms.

Business people from Jarvis, Cayuga, Hagersville and surrounding area are complaining about losing business in the wake of the loss of commerce from people that operated these farms.

Most of these people are blaming the Steel Company of Canada whose officials have announced repeated delays of their proposed steel making complex at Naticoke.

Reeve W.E. Austin of Jarvis told The Record, the company has made a survey in the Caledonia and Dunnville areas about economy there but either they haven't got to this area yet or they are not going to do it here.

The indications are that Texaco may make a move in the immediate future but what about Stelco?

Newly elected president J.P. (Peter) Gordon announced in April that the project wouldn't get started until 1975.

However, a couple of weeks later he amended this in another speech and predicted 1974 as the year, according to press reports.

Many people are thinking that because of the publicity and many expensive planning studies started after Stelco announced its plans to construct a steel making complex at Naticoke that the company has a moral obligation to do something about the sagging economy left in the wake of many farmers abandoning their land after selling it to the company.

This has been a hard blow for an area that was designated as being depressed even before this development.

Such a project would also help an unemployment situation that plagued all of Canada since last November.

It would seem reasonable that if the company will eventually need to construct its complex to stay ahead of its market demands that government and Stelco should get together and get this project moving.



These workmen are installing new safety electrical equipment that will operate the new Port Dover lift bridge automatically. (Staff Photo)



A good number of people despite rainy weather attended an auction at Naticoke as Texaco sold many items that were purchased with property to make room for a new refinery for the company. Many household items were sold. (Staff Photo)