

**ATTENTION! ALL N.F.L. & N.H.L. FANS!
NOW IS THE TIME TO PURCHASE T.V.**

COLOR



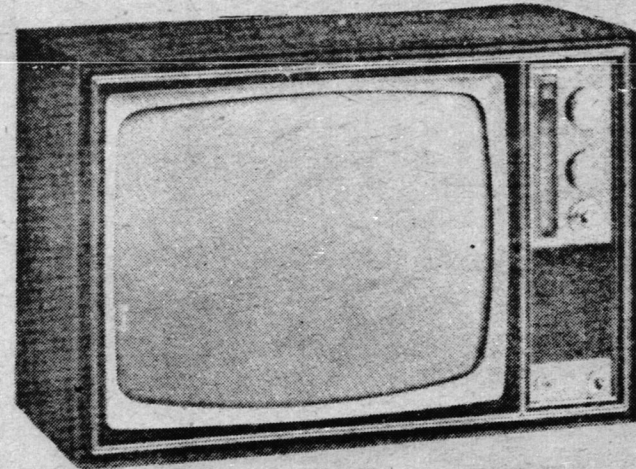
**Westinghouse
25" Color**

Reg. \$649.00

NOW ONLY \$579.00

5 YEAR

(Factory Service)



**"FIESTA 19"
COLOR**

\$449.00

*Ultra Color Picture Tube
*Auto Matic Fine Tuning
*Slide Rule Tuning
*Insta-View Picture

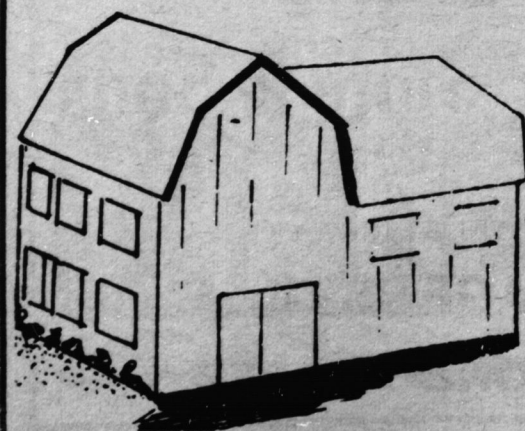
Reg. \$489.00
Now Only



*26" Spectra-Brite Picture Tube
*Automatic Fine Tuning Control
*CBE "One Touch" Color Tuning System
*Customatic Tint Lock
*Preset Fine Tuning
*Insta-View Switch
Reg. \$749.00 Sale... **\$649.**



AM/FM STEREO 8 TRACK
ONLY **\$179.00**



**QUALITY HOME FURNISHINGS CO.
"THE BLUE BARN"**

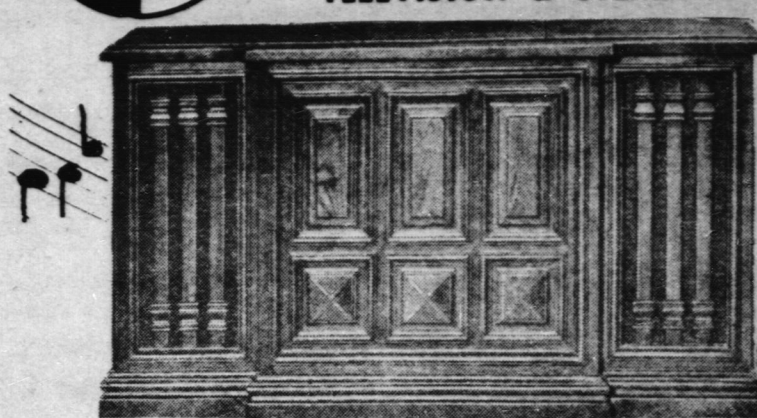
JAMES SORGE- JAMES ARMSTRONG - LYLE SHIRTON

DIAL-772-5382

1/4 MILE WEST OF CAYUGA #3 HIGHWAY

fleetwood

TELEVISION & STEREO



ENJOY
THE SOUND
OF
Care-Free
FLEETWOOD
STEREO

**HANDSOMELY MEDITERRANEAN
STYLED STEREO**

SALES & SERVICE

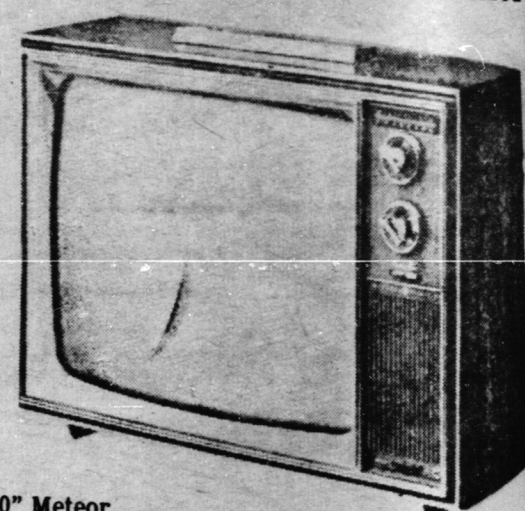
We have a fully qualified - COLOR, BLACK & WHITE and STEREO technician to service all your home entertainment problems.

*Ultra 50 Solid-State Tuner
*AM/FM/FM Stereo
*Garrard Changer
*Six Speakers
Was \$469.00

NOW ONLY...
(Limited Supply)

\$369.

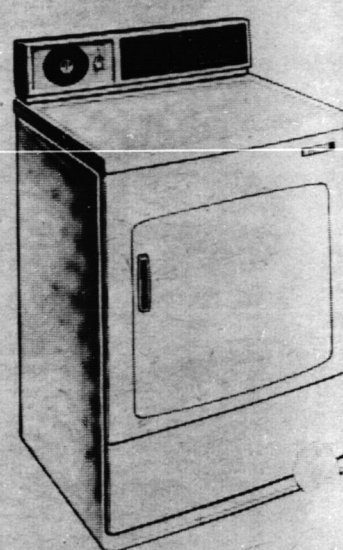
BLACK & WHITE



20" Meteor
*Walnut Grain Cabinet
*Insta-View Picture
*DioPole Antenna
*Preset Tuning

Reg. \$199.00

Sale **\$159.**



GAS DRYER SPECIAL

AS LOW AS **\$189.00**



**WE ARE
HERE**

Geese Are Easier To Raise

Geese are easier to raise than chickens and turkeys, but they're harder to process for market. However, there are only a few commercial producers scattered across the country, so beginners have difficulty getting reliable first-hand information on production and marketing methods.

Dr. E.S. Merritt and Dr. J.R. Aitken of the Canada Department of Agriculture's animal research institute at Ottawa have met the demand for more information by writing a 19-page booklet called Raising Geese.

The two poultry experts, basing much of their information on experience and observation in breeding and nutrition studies at the Central Experimental Farm at Ottawa, describe both the good and the not-so-good features of geese production.

On the plus side, geese grow faster than other domestic poultry. Medium and large breeds on full feeding gain a pound or more a week and reach market weight in 10 to 12 weeks.

They are so hardy that three to four week old goslings can be put to pasture with no housing except shelters from the sun and predators. Adults, sheltered from the wind, will survive in extremely low temperatures.

Geese aren't as disease prone as chickens or turkeys. Growing birds are not very susceptible to disease and a breeding flock can be kept for several years with few deaths.

They can also be very useful because goslings will weed orchards and crops such as strawberries and asparagus.

On the minus side, geese don't lay too many eggs. This means day-old goslings can be expensive. Geese are harder to process for market than chickens or turkeys, even with equipment and experience. However, some of this extra cost can be offset by the sale of down and feathers.

Dr. Merritt and Dr. Aitken also discuss the management, feeding, breeding and incubation and marketing of geese.

Improving Fairs

The two-day convention, sponsored by the Agricultural and Horticultural Societies Branch, Ontario Department of Agriculture and Food, reviewed all types of fairs and exhibitions held in Ontario. Other suggestions presented at the meeting were:

1. Promote exhibits where people are working - "live exhibits" will draw the crowds.
2. Keep midway noise down so that all results and timetable schedules are heard clearly.
3. Conduct livestock and other classes in front of the grandstand so that as many as possible see the animals.
4. Use the money provided to build and maintain clean washrooms and spectator facilities.
5. Dress up every fairground. Make the fair a holiday outing for patrons.
6. Stagger events so that timetable is easily maintained.
7. If conducting an evening program, finish afternoon events in time for patrons to get home and then return for evening shows.

Enjoy a night out



EXPLORER INN

EXPLORER INNS LIMITED

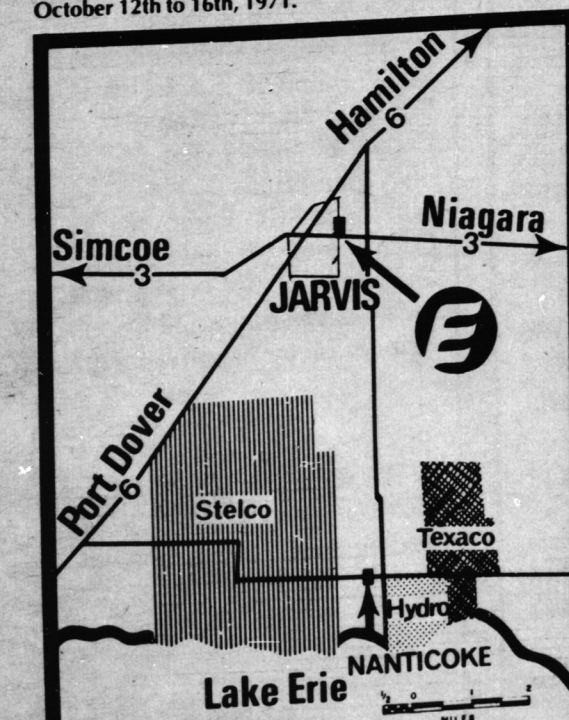
a new all-Canadian motor hotel chain and land development corporation, proudly announces the opening of its first motor inn, located on Highway 3, near the junction of Highway 6, in Jarvis, Ontario.

This area, south of Hamilton, on the north shore of Lake Erie, has been selected by Ontario Hydro as the site of its Nanticoke Generating Station, by Texaco (Canada) Ltd. for a new Ontario refinery, and by The Steel Co. of Canada for a fully-integrated steel plant.

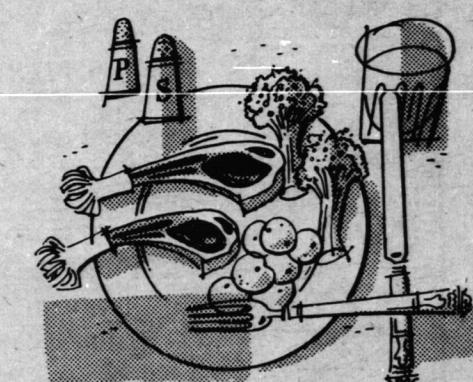
LAND DEVELOPMENT:
Explorer Inns Limited has available a fully-serviced 25-acre subdivision for housing and commercial development to serve the needs of this growing industrial area.

MOTOR INN:
Each deluxe guest room offers color TV, air conditioning, and the spacious comfort of two double beds. The beautifully appointed, fully-licensed lounge and dining room offer the finest in food and refreshment.

Explorer Inn will be the Headquarters for the International Plowing Match to be held in Jarvis, Ontario from October 12th to 16th, 1971.



Licensed L.C.B.O.



Delicious Food



Full Time Chef