

## Norfolk Has Much To See For Plowing Match Visitors

Norfolk County, on the north shore of Lake Erie in Southern Ontario, is recognized as one of the province's most perfect areas for a summer vacation. Every year brings thousands more visitors to the popular resorts.

From the yachting at Port Dover to the sandy beaches at Turkey Point to the recreational activities in provincial parks, Norfolk County affords every member of the family a chance for enjoyment.

Children can ride in amusement areas, fathers can fish, mothers can lie in the sunshine and teenagers can dance at the numerous pavilions.

There's swimming, water-skiing, boating, golfing, bowling, roller skating and sightseeing to keep even the most active person happy.

Norfolk's accommodation is on par with that anywhere in the province. There is a wide range of cabins, cottages, camps, hotels and motels. The operators provide a high degree of efficiency and progress in running their establishments.

A lot of money isn't needed to enjoy oneself in Norfolk County. Beaches are open to the public free of charge. There are many parks, the most notable

being in Simcoe, the county seat.

Driving through the county brings visitors in contact with rolling farms, lakeside views and lush scenery. Historical points of interest abound.

### Excellent Roads

Within easy walking distance of most Ontario regions and those in the Great Lakes section of the United States, Norfolk can be reached by train, bus and car. A network of excellent paved roads is improved upon yearly to make travelling a breeze in the county.

For those who like to mix city bustle with

vacation relaxation, Norfolk County is close to Toronto, Hamilton, Kitchener, London, Niagara Falls and Buffalo.

Famous all over the world for its bass fishing, Long Point Bay lures thousands of fishermen yearly to test their skills with rod and line. On weekends colorful water crafts dot the blue waters of the Bay.

More for commercial fishermen, Port Dover has one of the largest freshwater fishing fleets in the world.

Many provincial highways lead to Norfolk County. The main artery between Detroit and Buffalo, No. 3 Highway, passes through the

centre of the county. Highway 24 leads from the northern resort areas through the Guelph-Galt-Kitchener industrial complex into the region. Highway 6 brings visitors from the northeast. Connecting paved roads are provided between resort towns.

The prime requisites for a resort, good swimming facilities and sandy beaches are plentiful in the county.

Shallow water at every port makes the bathing ideal for children. There is plenty of depth to challenge proficient swimmers, too. One of the most pleasant features is the absence of rocks or stones on the sand, even in the water.

There is a total of nine principal resort regions along the north shore of Lake Erie in Norfolk, beginning from the district east of Port Dover and continuing west to Houghton Township. In addition, there are several campsites.

Port Dover is the largest resort in Norfolk County and one of the biggest on the north shore of Lake Erie. Its attractions for summer visitors include bathing, boating, fishing, dancing, cottages, tourist camps, bowling, miniature golf and an amusement centre.

Continuing westward, the resorts of Port Ryerse, Fisher's Glen and Normandale all have cottages for rent and excellent swimming and boating facilities. Fisher's Glen is particularly noted for its scenic beauty.

Turkey Point is another of the large resorts. It offers a wide, safe, sandy beach, cottages for rent, hotel accommodations and boats and guides for fishing parties.

Modern Marinas  
St. Williams and Port  
Rowan also provide

Published by HALDIMAND-NORFOLK LIBERAL ASSOC.  
**VOTE  
ALF  
JUDD  
LIBERAL**  
Experienced Enough  
to tackle your problems  
Young Enough  
to Serve!

## LADIES

### DAILY PROGRAMME

11:00 - Organ Prelude  
11:15 - Cooking School  
by UNION GAS CO. OF CANADA  
12:15 - Flower Demonstration  
by IVEY'S (Port Dover)  
1 p.m. - Fashion Show  
by Walker's Store (Simcoe)  
Oct. 15 - FUR FASHIONS  
by Kindy & Sons (Selkirk)  
Oct. 16 - WIGS and HAIR FASHIONS  
by Walker's Store (Simcoe)  
2 P.M. - VARIETY PROGRAM  
Oct. 12 - MUSIC by GEORGE SHIPPEY  
WOODWORKING -  
Mr. Herbert Pennock, Hagersville  
Oct. 13 - FOLK SINGING -  
Mrs. Keith Richardson, Dunnville  
DRAPERIES -  
by Short's House of Drapery (Hagersville)  
Oct. 14 - MUSIC by GEORGE SHIPPEY -  
SPECIAL BEAUTY CONSULTANT, FASHION 220 -  
Mrs. Freida Glenn, St. Catharines  
Oct. 15 - FOLK SINGING -  
Mrs. Keith Richardson, Dunnville  
HOME DECORATING -  
by the Color Centre, Caledonia  
Oct. 16 - MUSIC by JOHN and BILL BATES, Caledonia  
SPECIAL BEAUTY CONSULTANT, FASHION 220 -  
Mrs. Freida Glenn, St. Catharines  
- NUMEROUS DRAWS TO BE MADE  
THROUGHOUT THE DAY -  
ELECTROHOME - Courtesy Dunnville Appliance  
and T.V. Company  
ORGANISTS:  
Mrs. E. Murphy - Mrs. G. Field - Mrs. B. Miller

## Norfolk

Continued from Page 32  
brings tourists into  
contact with wild life. There  
newly re-opened fishing

facilities for fishing parties  
to hire. Many modern  
marinas dot the inner bay.  
Long Point is quickly  
becoming one of the best  
resorts on Lake Erie. There  
are cottages and cabins  
available, a hotel and motel  
with access to the fishing  
grounds, boats for rent,  
extensive sandy beaches and  
dance pavilion.

Ample camping  
picnic areas can be found  
in the supervised Provincial  
Parks at Turkey Point and  
Long Point. The Norfolk  
County Park west of Port  
Ryser provides the same  
sources of enjoyment.

One of Norfolk's most  
widely renowned tourist  
attractions is the Sand Hills,  
located west of Port Rowan.  
Mountains of sand overlooking  
the lake in a natural  
phenomenon. Multitudes of  
visitors climb the hills  
annually. For those who  
want more than a quick view  
there is a camping site  
below.

North of St. Williams is  
the Provincial Government  
Forestry Station which  
supplies millions of trees for  
the province each year. A  
beautiful park area at the  
station is the scene of  
numerous private and  
organizational picnics. A  
drive through the wooded

See Page 33, Col. 1

Point who rescued several  
American sailors from  
drowning when their ship  
ran aground, is in Oakwood  
Cemetery, Simcoe. A  
monument marks the grave.

### Enlarge Museum

Also in Simcoe is the Eva  
Brook Donly Museum of  
Art and Antiques, housing  
one of the finest county  
collections of historical  
relics and paintings in  
Ontario.

In the Anglican Church  
yard at Port Ryerse are the  
graves of a number of  
American soldiers who were  
killed in the War of  
1812-14.

There are four historical  
points near Port Rowan: the  
Backus Mill, north of the  
village which began  
operation prior to 1800; the  
Troyer Home east of the  
village which was the home  
of pioneer Dr. John Troyer;  
the Bayview Cemetery  
which was the site of the  
first wheat field west of the  
Niagara District; and a  
plaque in Port Rowan in  
memory of Abigail Becker.

On the present location  
of the government fish  
hatchery at Normandale, a  
plaque marks the site of the  
widely-known VanNorman  
Foundry.

These are just some of  
the tourist attractions in  
Norfolk County.

Through the efforts of  
tourist resort operators, the  
Tourist Section of the  
Norfolk County Chamber of  
Commerce, Norfolk County  
Council and the individual  
citizens who make their  
home here, visitors are  
offered every convenience  
and courtesy, with the  
accent on enjoyment.

## Points Of Interest In Norfolk County

\* Memorial Cross on  
Brant Hill, Port Dover,  
commemorating visit of  
French priests, first white  
men to touch Lake Erie's  
north shore.

\* Cairn on Black Creek,  
north of Port Dover,  
marking wintering site of  
French priests, 1669-70.

\* Cairn in Powell Park,  
Port Dover, where Sir Isaac  
Brook assembled his  
Canadian army for  
expedition against Detroit  
in War of 1812-14.

\* Cairn on Turkey Point  
Hill marking site of Fort  
Norfolk where British  
Regulars were stationed to  
repulse American raids in  
1814.

Monument in Oakwood  
Cemetery, Simcoe, marking  
grave of Abigail Becker, the  
heroine of Long Point.

Carillon Tower of 23  
bells at Simcoe. Erected in  
1925 to commemorate  
Norfolk County heroes who  
fell in the First World War,  
and also now pays tribute to  
those service men who did  
not return from the Second  
World War.

Norfolk Museum of Art  
and Antiques at Simcoe,  
one of the finest county  
collections of historical  
relics and paintings in  
Ontario, recently renovated  
and enlarged.

Backus Mill north of Port  
Rowan. This mill is 160  
years old and remains in its  
original state. The mill and  
30 acres adjoining property  
now forms a public park.

An important  
contributing factor to the  
county's tourist business has

been the interest in recent  
years of county and  
provincial governments.  
Norfolk County Council  
established parks at Port  
Ryser and Turkey Point  
for the convenience of  
visitors, whether camping or  
just casually stopping for a  
day. The Ontario  
Government has extended  
and improved its provincial  
park at Long Point and has  
also embarked on a long  
range program aimed at  
developing a 700-acre park  
around Turkey Point,  
including the county park  
which it has taken over.

Numerous historical sites  
have been marked by the  
Province and the Big Creek  
Region Conservation  
Authority.

Published by HALDIMAND-NORFOLK LIBERAL ASSOC.

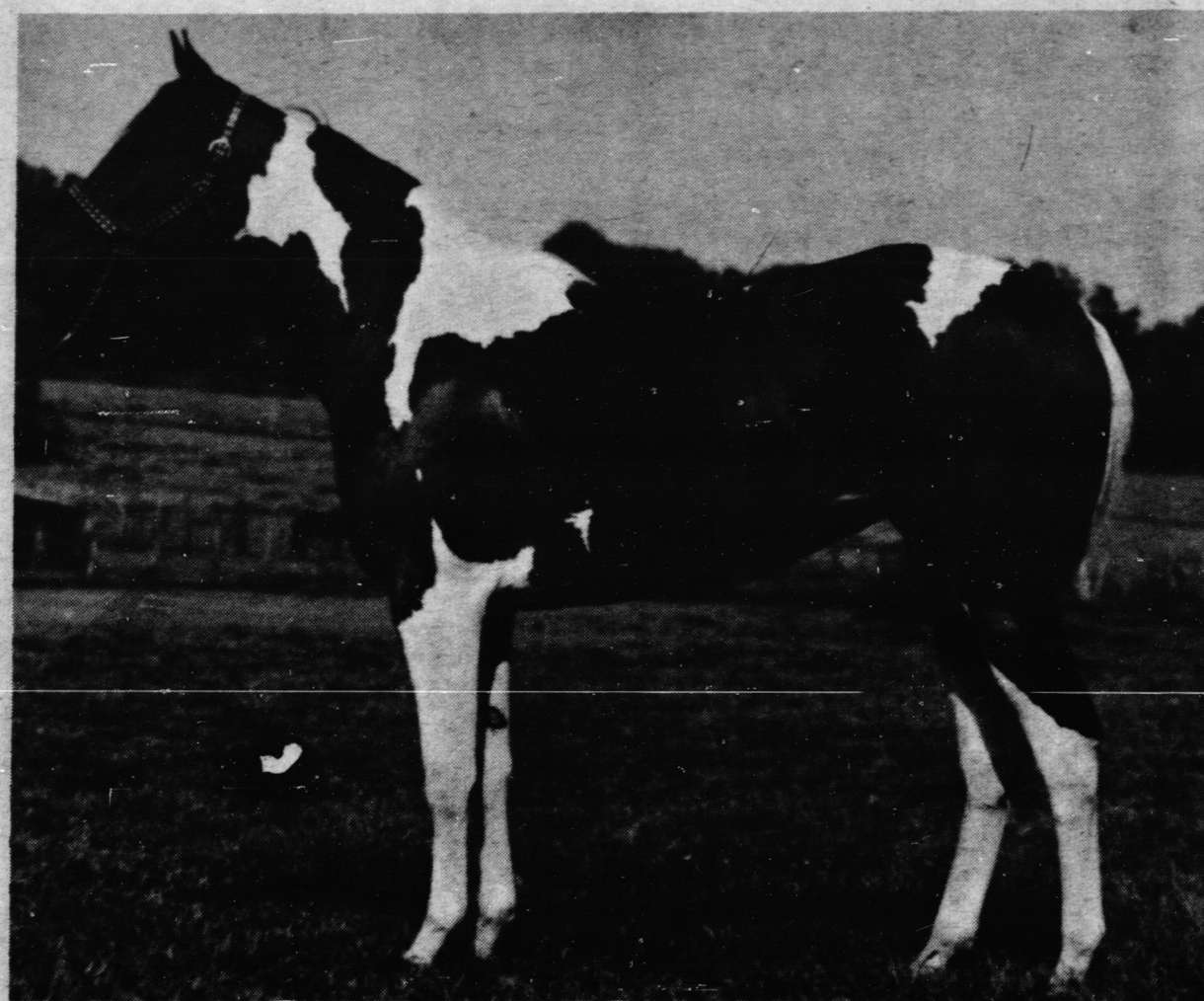
**VOTE  
ALF  
JUDD  
LIBERAL**

Experienced Enough  
to tackle your problems  
Young Enough  
to Serve!

FORTIFIES ITSELF  
TORONTO (CP) -

Rochdale College has  
installed steel bars across  
hall-lobby windows on its  
18-floors to prevent people  
from falling or being pushed  
through. R. H. Milne, city  
building commissioner,  
reported recently. The move  
complies with a coroner's  
jury recommendation in  
June after an inquest into  
the death of a youth who  
crashed through a  
sixth-floor window during a  
fight and fell to the street.

## CANADA'S FIRST



### S. S. Eagles Dream

Two-year-old filly has been awarded an  
American Paint Horse Association  
Championship.

She is the first horse in Canada to win an  
A.P.H.A. championship.

S. S. Eagles Dream is also the youngest  
horse in history to be awarded an A.P.H.A.  
Championship.

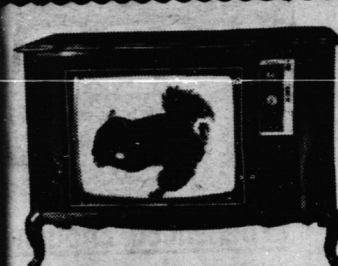
Owned By - JOHN EDWARDS

**OPEY'S DISCOUNT  
VARIETY**

**SIMCOE - ONTARIO**

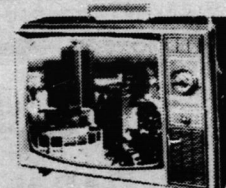
"We now carry the world famous"

- LEE JEANS -



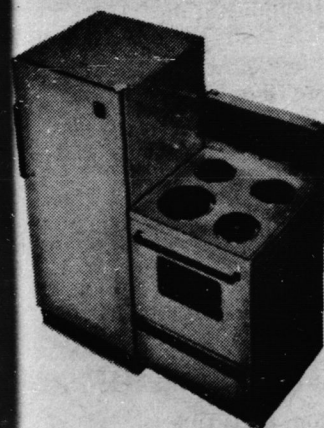
FLEETWOOD TOP QUALITY  
COLOUR TVs

CONSOLE  
MODELS  
FROM 499. WT



FLEETWOOD  
TROUBLE FREE  
PORTABLES  
99. UP

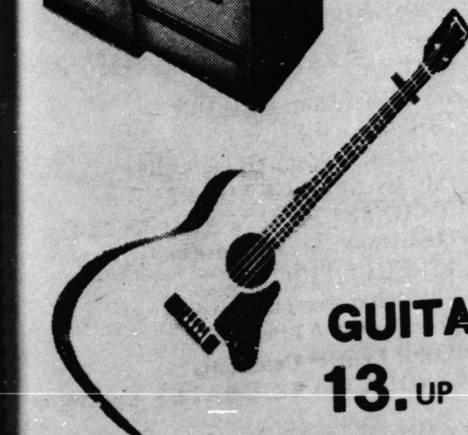
FLEETWOOD - UTMOST RELIABILITY, UNSURPASSED  
PERFORMANCE, SUPERIOR STYLING, OUTSTANDING VALUE



REFRIGERATORS  
& RANGES

199. UP

40 FT.  
TOWER KIT  
SPECIAL  
49.95



GUITARS  
13. UP

TAPES & RECORDS  
DISCOUNTED

WE SERVICE & SELL  
TOP QUALITY C.G.E.,  
FLEETWOOD & A.G.S.  
PRODUCTS

**ACE TV & MUSIC CENTRE**  
217 MAIN ST. 583-2287 PORT DOVER



just to

see this newest fast runner in the  
new Arctic Cat line for 1972.  
We'll give you its exciting specs  
when you get here. you know  
you can  
count  
on  
the  
Cat

**DOUGHTY & WILLIAMSON  
LIMITED  
JARVIS  
587-2273**