

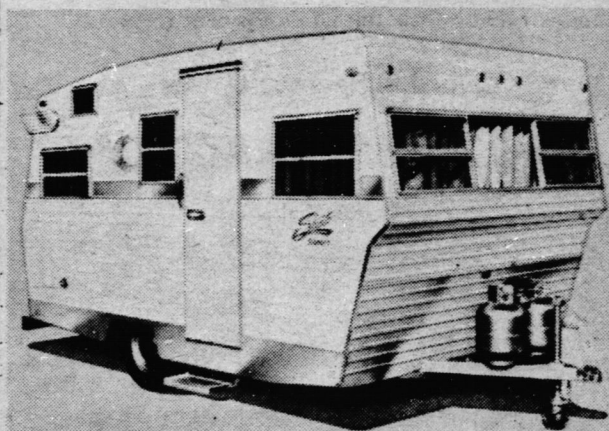
42 - PLOWING EDITION, Thursday, October 7, 1971
CHEQUE WARNING - cheques stolen from a VANCOUVER (CP) - Vancouver printing firm in MacMillan Bloedel Ltd. said March are beginning to appear in the Lower

Mainland. The cheques carry the name MacMillan Bloedel Ltd. and in smaller print, "Powell River Division, Powell River, B.C." They are printed on yellow bank safety paper and bear the serial numbers from 2001 to 2145.

HUNSINGER & SON LIMITED

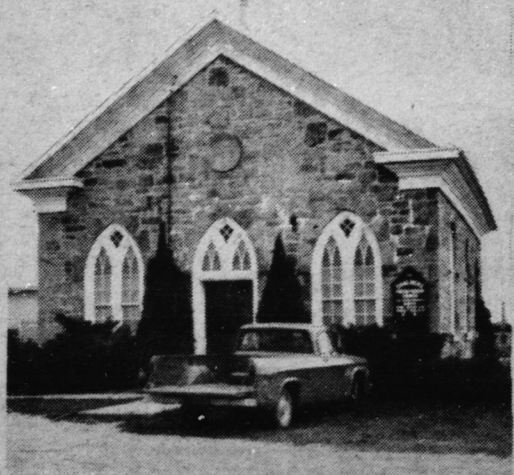
FISHERVILLE

Electricians FOR THE TENTED CITY



- LIFETIME MOTORHOMES
 - GLENDETTE
 - CITATION
 - TRAVEL TRAILERS
- JARVIS ONT.**
 Cor. 3 & 6 Highways

Shasta
TRAILERS
Werner
Trailer Sales
 "SINCE 1958"



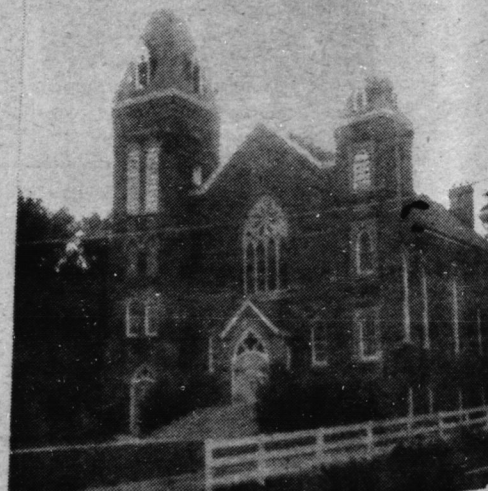
Chalmers Walpole
 "OLD STONE CHURCH" Cor. 3 Highway & Cheapside Since 1842

CONGRATULATIONS HALDIMAND COUNTY

HOST TO THE
INTERNATIONAL PLOWING MATCH

May we cordially invite our guests to
 worship in Historic Presbyterian Churches

CHALMERS - WALPOLE Service 10 a.m. School 11 a.m.
KNOX - JARVIS School 10 a.m. Service 11 a.m.



Knox Jarvis
 115 ANNIVERSARY
 Oct. 31st. 11 a.m. & 8 p.m. Since 1856

Friday, October 15th

Class 30 - Horses - Open - Jointer Plows

Class 31 - Tractors - Mounted - Two (or more) Furrows. No Opening Split
 Junior Championship Inter-Branch Competition
 Open to one contestant from each plowing branch in Ontario 14 years and under 19 years of age at time of the Match.

Class 32 - Tractors - Mounted - Two (or more) Furrows
 Intermediate Championship Inter-Branch Competition
 Open to one contestant from each plowing branch in Ontario 19 years and under 23 years at time of Match.

Class 33 - Tractors - Open - Two (or more) Furrows Mounted or Trailer
 Ontario Senior Championship Class
 Competitors are required to plow two lands, sod or stubble, or both, under the Canadian Championship Rules, and must have reached their 20th birthday by March 1st, 1971.

1st and 2nd Prize Winners in this class will qualify to plow in the 1972 Canadian Championship Plowing Contest.

Class 34 - Tractors - Utility - Open - Mounted
 Furrows must not be touched by hand, foot or stake

Class 35 - Tractors - Mounted or Trailer - Three (or more) Furrows
 Furrows to measure not less than 14 inches.

Class 36 - Tractors - Mounted - Two (or more) Furrows. No Opening Split.
 Open to plowmen who have not reached their 18th birthday by November 1st, 1971.

HORSE SHOW

Open to teams used by competitors, and which had been available for match plowing on at least three days.
 To qualify a team must have been used by a competitor to plow and finish a land, in competition, during the period of the Match.
 Prizes will be awarded to the bona fide owners of the horses.

Saturday, October 16th

Class 37 - Tractors - Mounted or Trailer - Four (or more) Furrows. No Opening Split.
 Furrows to measure not less than 14 inches.

Class 38 - Ontario Plowmen's Association Provincial Director's Class - Tractors - Two (or more) Furrows Utility - Mounted Plows - Time: 2 Hours - No Opening Split

Furrows must not be touched by hand, foot or stake
 Directors must arrange for their own equipment and be prepared to commence plowing at 11 a.m. sharp.

EMPTY BEDS

TORONTO (CP) - A college, which has managed to solve its problem of declining enrollment, is facing a new

problem - empty rooms in its residences. Ian Gentles, dean of students, said in an interview that 115 of 532 beds in two college

residences are vacant because of an increase in residence rates of about \$200 for the academic year. Last year there were only 25 vacant beds.

Congratulations Haldimand County & Best of Luck for the International Plowing Match
SLACK LUMBER & Supplies Limited
 "General Building Material"



THREE YARDS TO SERVE YOU
EMPIRE-CALEDONIA-CAYUGA
"The Best for Less"

Get full value for your CORN CROP. Check the complete services of your CO-OPERATIVE

**NEW 60 FT. PLATFORM TRUCK
 HOIST AT COURTLAND
 FOUR MORE SILOS AT WATERFORD**

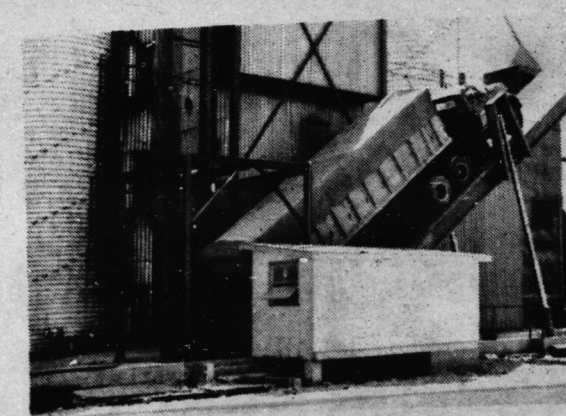
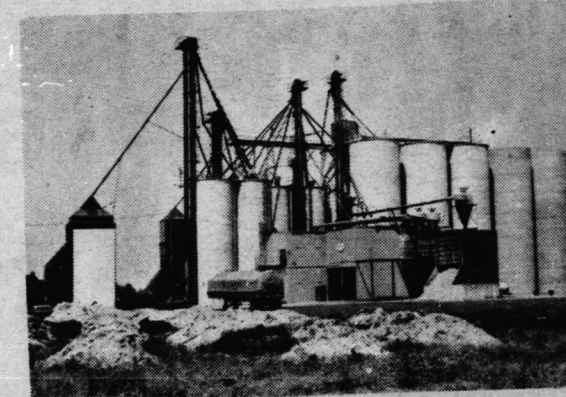
Now completed are 4 more silos with a capacity for an extra 120,000 bus. bringing the total storage capacity at the Waterford Elevators to 360,000 bus. Late last year a new 1,000 bus. per hour grain dryer was installed. The new dryer will triple the drying capacity at Waterford and make it possible to dry grain at approximately 1,500 bus. per hour, about as quickly as it is received.

The Norfolk Co-operative's increased storage facilities and improved drying equipment will greatly assist the harvest of this seasons corn crop for area farmers.

The Speed that grain can be received will be tripled by additional equipment now installed at the Courtland Elevator. A 60 ft. platform truck hoist which raises tractor and trailer is now installed and ready for corn harvest. This hoist is much faster for unloading because the trailer doesn't have to be unhooked from the tractor. The grain is then dumped into a large pit serviced by a high capacity elevator per hour. This will raise the total capacity for receiving grain to well over 5,000 bushels per hour at Courtland. In addition to the increased receiving capacity the two high speed grain dryers at Courtland have been recently altered and are now capable to drying approx. 1,500 bus. per hour of 28 per cent moisture corn.

- * TOP PRICES
- * MODERN ELEVATORS
- * FASTER UNLOADING
- * RELIABLE MARKET INFORMATION
- * ACCURATE WEIGHTS AND MOISTURE TESTS

Norfolk Co-Operative
SIMCOE - WATERFORD - JARVIS - COURTLAND



Flies Cause Cattle Stress

GUELPH - Flies cause more stress in cattle than is sometimes realized, says Bob Slumskie, beef specialist with the Ontario Department of Agriculture and Food. Unless effective control methods for both flies and lice are used, he says, animal gains in both feedlots and pastures will drop.

There are two steps to fly control. The first is proper sanitation and manure removal to control breeding places. The second is proper use of insecticides. Horn and stable flies are very irritating to cattle, both indoors and out. A relatively effective control method is a backrubber. A backrubber kept moist with insecticide will also help control face flies and will help prevent a buildup of lice. However, says Mr. Slumskie, cattle with a heavy infestation of lice should be sprayed.

Two basic types of backrubbers are marketed. The first is a horizontal type with a hanging flap which

retails for about \$50. The second is an angle type. This retails for about \$50 for the permanent installation type and about \$150 for the portable type.

One problem with such machines is that they are activated only by the animal rubbing against them. There is no guarantee that each animal will receive treatment, nor any control over the amount of insecticide each would receive at a given time.

Effective insecticides and backrubbers can be obtained through various outlets in Ontario. The insecticide can be purchased both in a ready-to-use form and a concentrated solution which the farmer mixes himself with fuel oil. The ready-to-use mixture is considerably more expensive than the concentrate. Two

insecticides recommended for use are Ciodrin and Ronnel. And, as with all agricultural chemicals, says Mr. Slumskie, follow the instructions on the label.

Published by HALDIMAND-NORFOLK LIBERAL ASSOC.

VOTE
ALF JUDD
LIBERAL

Experienced Enough
 to tackle your problems
Young Enough
 to Succeed

If you are in the market for a fancy riding lawn and garden tractor - don't stop at the

SPEEDEX BOOTH

Yule Ave. - Machinery Row

But...If your Looking for

- Rugged dependability
- High performance in the field
- Unit designed attachments for lawn and garden care 12 months of the year
- 2-year guarantee

Please DO visit our display

Our factory representatives and participating dealers will be only too happy to answer your questions and demonstrate our fine line of equipment for you.

Canadian Representatives

SPEEDEX TRACTORS

35 Maida Vale Ave.

SCARBOROUGH 703 ONT.

416-759-8698

VAC-U-BUG



- * HOMES
- * FARMS
- * GARDENS
- * COTTAGES
- * SWIMMING POOLS
- * ORCHARDS
- * CAMPING AREAS
- * DRIVE IN RESTAURANTS
- * GOLF COURSES
- * RIDING STABLES ETC.

MANUFACTURED BY DE CLOET BROS. LTD.

92 SIMCOE ST., TILLSONBURG, ONT.