

Photographs Record Day Spent With Dover Fishermen

PORT DOVER - Captain Gerry Rapchenkopf, of Port Dover, headed out of Port Burwell last Saturday at 5 a.m. with his normal crew of John Mummery and Hector Butcherk aboard his Gerry S, along with a member of The Record staff Robert Byl.

Mr. Byl, The Record's pressman and an ardent amateur photographer, had asked to go out on Lake Erie with Captain Rapchenkopf in order to record on film one of man's oldest enterprises - commercial fishing.

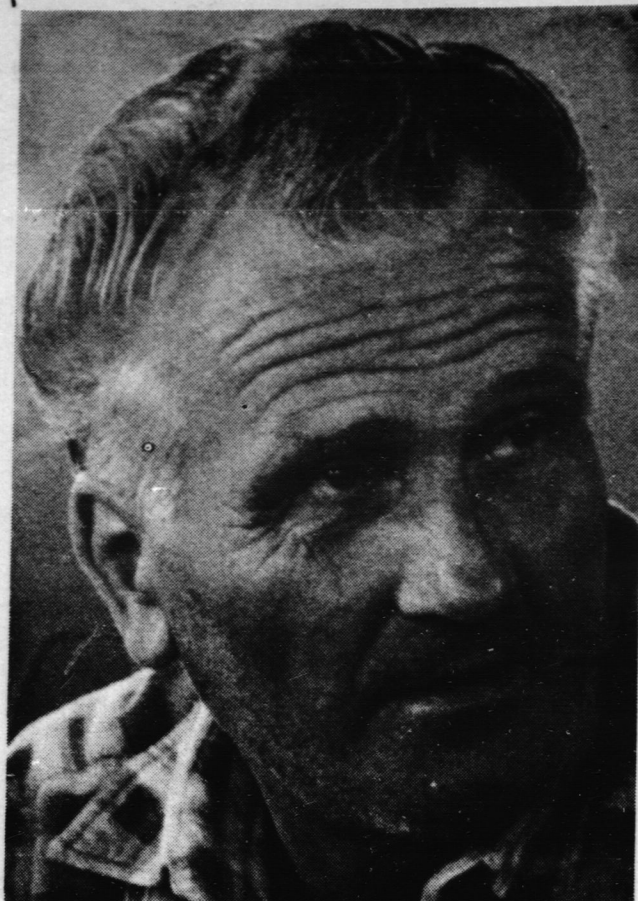
Captain Rapchenkopf has been fishing on Lake Erie for the past 18 years and last Saturday he and his crew aboard the 40 - foot Gerry S lifted enough perch to fill 12 crates, each weighing about 80 pounds.

For this half a ton of fish Captain Rapchenkopf had to set some 240 nets, which stretch out about nine miles. He recalls that only three or four years ago he had only to set 60 nets to pull in two tons of fish.

After leaving Port Burwell, the Gerry S headed out on course for two-and-a-half hours before picking up the net buoys. By 8 a.m. the nets were being pulled in on a revolving drum while the crew quickly pulled the fish from the nets.

After the nets are cleaned of fish the boat headed back to shore, set on auto-pilot and the three man crew continued their work of cleaning fish.

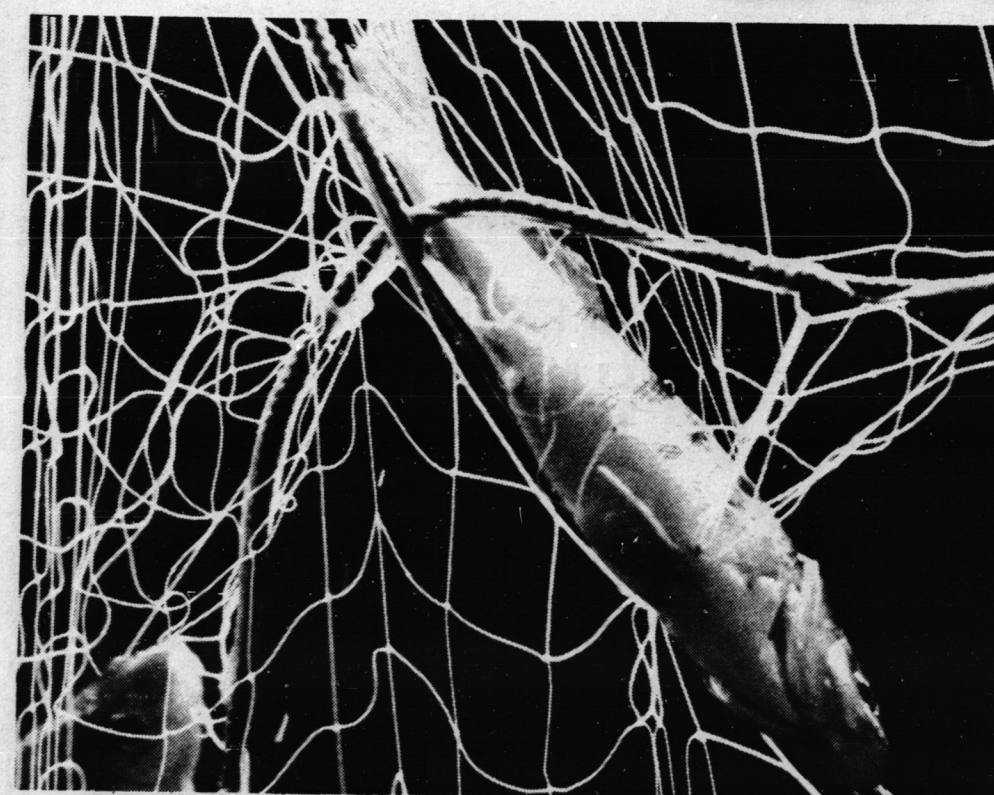
It's a long, hard working day for the fishermen, but not without a sense of independence and beauty, which these photographs capture.



Luccardo Junction
FORMAL RENTALS

"FOR THAT FORMAL FUNCTION - SEE TUXEDO JUNCTION"

BILL'S
MEN'S WEAR
HAGERSVILLE
768-3718



MAY 24 AMATEUR CONTEST ENTRY FORM

The Jarvis Lions Club,
Jarvis, Ontario

I hereby make application to enter the Amateur Contest to be held in the evening of May 22, 1972 at 7:30 p.m. at the Jarvis Community Hall in the category indicated below:

8 Years and Under:

Vocalist Instrumentalist Variety

9-12 Inclusive:

Vocalist Instrumentalist Variety

13-18 Inclusive:

Vocalist Instrumentalist Variety

Group of 6 or More in Any Type of Act (18 Years and Under)

(Signed)

(Complete this form and return to Bill Snowden or Glen Reicheld, Jarvis, Ontario.) on or before May 20 if Possible.

CARPET IS OUR
ONLY BUSINESS

FULL LINE OF
DOMESTIC
AND IMPORTED
BROADLOOM

EMPIRE RUG
CO.
DISCOUNT CARPET WAREHOUSE

A TRUSTED NAME IN BROADLOOM
FOR OVER 35 YEARS

OPEN THURSDAY AND
FRIDAY TILL 9 P.M.

26 KENT ST.
N., SIMCOE
ACROSS FROM A&P
Phone Collect
426-7510

Tile Outlets Should Be Kept Running Freely

Farmers should check all their tile systems at least two or three times a year says M. Sojak, Engineering Division, Ridge-town College of Agricultural Technology, and he emphasized that, "the most important inspection is in the springtime."

Want To Cash Cheques Friday Night?

Saturday morning
maybe?

Open an account with Guaranty Trust. Pay by cheque. Open Friday night and Saturday morning. Get your cheques back - with a monthly statement. Open six days a week. Service hours to suit you!

Guaranty Trust

COMPANY OF CANADA
Corner of Norfolk and
Robinson Streets, Simcoe

DANCE

Sponsored By
Jarvis Lions

JARVIS
COMMUNITY HALL
SAT., MAY 6

Dancing
9 p.m. to 12.30 a.m.

ORCHESTRA:
EARL RAY

The most important part of any tile drainage system is the outlet. In the spring, flowing ice in the drainage ditch or ice and snow sliding down the ditch bank may have damaged or pulled out the outlet pipe. Surface water run-off may erode the ditchbank and undermine the tile outlet. Rodent guards may have pulled off or rusted away. Any damage of this type must be repaired at once or the situation will deteriorate, says Mr. Sojak.

Ditches which have silted for a long time should be cleaned out to allow free outlet for the drainage system. A system with a continually submerged outlet will deposit silt in the tile and reduce its efficiency and life. Very few commercial crops send their roots down into tile drains. However it does occur to some extent, Mr. Sojak noted. These roots die during or after the growing season. Dead roots may clog tile outlets at the rodent guard during spring runoff. These guards should be cleared to ensure proper operation.

Wash-ins or blowouts in drainage systems must be repaired immediately. If repairs are delayed, a heavy rainfall could clog the system with soil from the point of damage to the outlet. A tile line that is working can be spotted by the narrow strip of dry ground surface above it. If

the strip ends abruptly and it is known the tile extends further, this may indicate a blockage point. Airplane observations are an excellent way of detecting nonoperating lines in a system.

Emergency Parts For Farm Machinery

Farm machinery does wear out and replacement parts are required. When this occurs the cultivating or seeding program could be delayed, says Hal Wright, Secretary-Manager of the Ontario Farm Machinery Advisory Board.

Most of the farm machinery parts depots can fill 90 to 92 per cent of the daily orders received from the dealers. Parts orders received prior to 3 p.m. are normally shipped the same day, Mr. Wright said.

All major farm machinery companies now use Telex. This allows them to determine in a matter of minutes, whether these parts are in Edmonton, Montreal, Winnipeg, Racine, wherever parts depots are located. Then it's just a question of deciding which depot can ship the part the fastest and/or cheapest, said Mr. Wright.

Not all "back orders" are an emergency, and if there is no rush the part can be shipped the cheapest way. However, if the machine is broken down and production is being delayed the decision is up to the customer. Mr.

Detailed plans of the system are extremely important, and, says Mr. Sojak, aerial photos, even with a standard camera, can be very helpful for comparison with the plans.

GIVES MORE AID

TORONTO (CP) - sday. Financial aid to The Canadian Red Cross has given an additional \$10,000 to help finance Red Cross relief programs in Bangladesh, it was announced Tuesday. The newly-emerged nation and its refugees since May 1971 by and through the Canadian Red Cross has totalled over \$1 million.

KINSMEN CLUB OF HAGERSVILLE

presents

Walt Disney's

DUMBO

HAGERSVILLE COMMUNITY CENTRE

Saturday, May 6

at

2 P.M.

J. W.

STARKWEATHER

& Son
SMALL

ENGINE REPAIRS

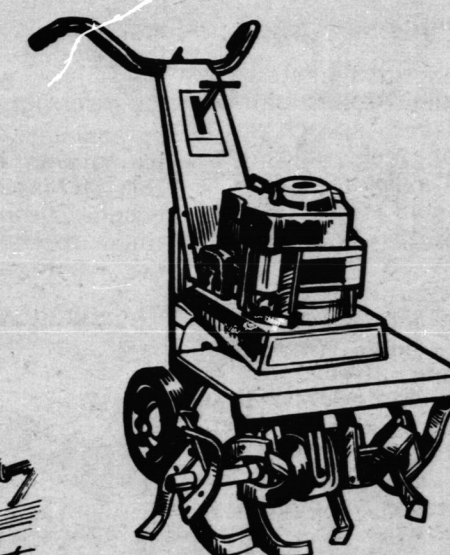
Repairs to all

makes and models

•LAWN MOWERS

•GARDEN EQUIP.

•FARM EQUIPMENT



FREE

PICKUP AND

DELIVERY



GET THE

Habit

PHONE

587-4236

JARVIS

'If you can break it, I can fix it'

HONDA

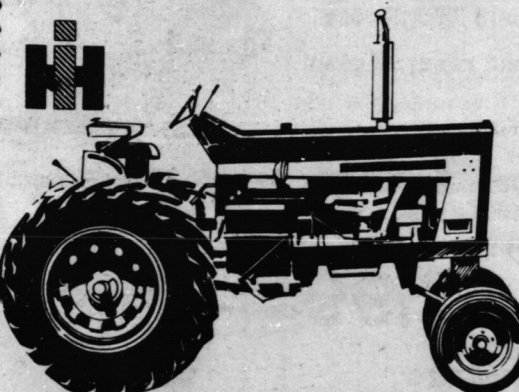
Please note our new hours from -

MAY 1ST

We will now be open . . .

MONDAY - WED. & FRI. NIGHTS

Til' 9 P.M. for your convenience



YOUR
INTERNATIONAL
DEALER

PHONE
779 - 3463

LYNCH BROS.
FISHERVILLE