

Childrens Crusade

Of interest to parents and children is the Boy's and Girl's Crusade featuring UNCLE LARRY AND JO JO the puppet to be held in the Hagersville Pentecostal Church next week, 14 Sherring St. at David.

Rev. Larry Aide of Hunsville has been actively engaged in children's crusades both in Canada and the United States holding great campaigns in churches and summer camps ministering to many thousands of children over a period of some thirty years.

Rev. C.L. Warriner pastor of the Hagersville Pentecostal Church extends a warm welcome to people of all faiths in this area to attend this crusade held in the interest of your boys and girls. Parents are invited to attend with their families and there is no admission charge.

The crusade commences this coming Tuesday Sept. 30th, and continues nightly for one week up to and including Friday October 3rd. The crusade begins at 6.30 p.m. and will conclude not later than 8.00 p.m. Rev. Aide will also be with us for Sunday October the fifth in the Sunday School and will minister to the adults in the morning worship and evening services as well.

For the children's entertainment and learning there will be mystery lessons, Object Lessons, Puppets, Flannel Graph stories, prizes and Surprises.

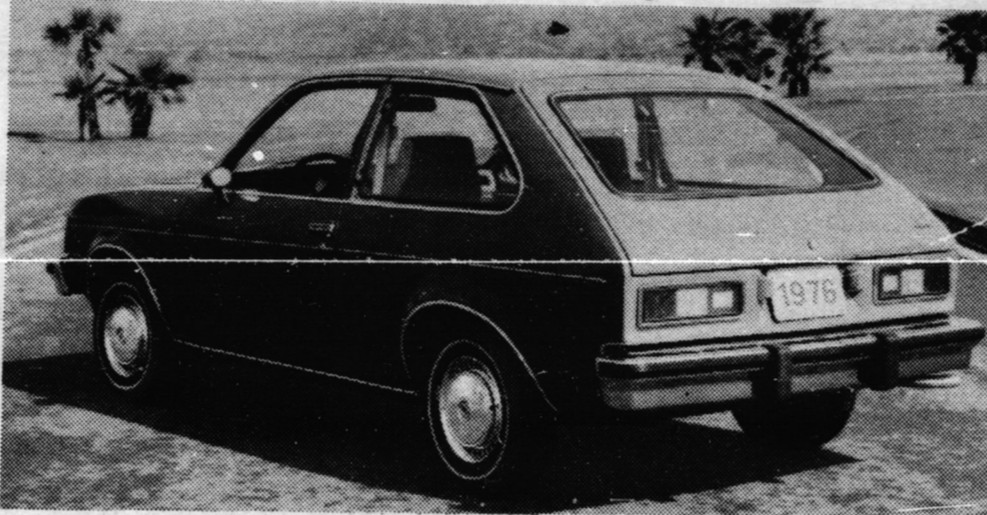


1976 CHEVROLET CHEVETTE

The new 1976 Chevrolet Chevette, offered by General Motors of Canada, is the lightest North American-built car with a curb weight of 1,983 pounds, 31 less than any current Chevrolet. Offered in

one body style, the two-door hatchback with convertible cargo space, the Chevette is the shortest Chevrolet ever at 158.7 inches overall. The new car refined from GM's worldwide "T" car design

features a front-mounted new 1.4 litre four-cylinder single overhead camshaft engine with four-speed manual transmission as standard equipment.



1976 CHEVROLET CHEVETTE

The new Chevrolet Chevette, offered by General Motors of Canada, is an all North American-built car with its own distinctive levels of economy, liveliness and first-

class reliability. Called the "T" car for its engineering name, the four-passenger hatchback weighs less than 2,000 pounds and is 17 inches shorter than any previous

four-cylinder cast-iron engine available in either 1.4 or 1.6 litre displacements, the Chevette combines the virtues of a family car, a sporty coupe and a handy estate car.

Mini Car

Oshawa, Ont. -- The new Chevrolet Chevette offered by General Motors of Canada takes the North American motoring public into "broad new dimensions of automotive design, economy and efficiency."

"The Chevette will be an all North American-built car with its own distinctive levels of economy, liveliness and first class reliability," David C. Collier, President of General Motors of Canada, declared.

"Chevette is a resourceful response to the needs of today's motoring public and we expect it to become a pace-setter in the economy small-car market. It brings to the marketplace -- in record time -- the latest Chevrolet design advancements using the basic concept of a proven GM world-wide vehicle."

Called the "T" car for its engineering name, the four-passenger hatchback weighs less than 2,000 pounds and is 17 inches shorter than any previous Chevrolet. The Chevette combines the virtues of a family car, a sporty coupe and a handy estate car.

Chevette brings an impressive list of "firsts" to the North American car market including:

- Lightest North American-built car with curb weight of 1,983 pounds, -- 31 less than any current Chevrolet.
- First North American-built metric car with emphasis on design for extraordinary durability and reliability.
- Shortest Chevrolet ever at 158.7 inches overall (barely

13 feet) but with remarkable roominess that rivals some larger cars in rear seat comfort.

- Most comprehensive piece-by-piece anti-corrosion protection of any North American-built car.

- Smallest turning circle diameter (30.2 feet) of any North American car, featuring first use of lightweight rack and pinion gear steering for a General Motors-built car.

- First General Motors on-vehicle use of an electronic diagnostic "trouble shooting" system.

Chevette is offered in one body style, the two-door hatchback with convertible cargo space. A wide variety of optional equipment is offered. Variations of the standard model include one with a higher level of custom exterior and interior equipment, a sporty Rally package and a "woody" option featuring woodgrain accents.

The new car, refined from GM's worldwide "T" car design, features a front-mounted new 1.4 litre (85 cubic inch) four-cylinder single overhead camshaft engine with four-speed manual transmission as standard equipment. A 1.6 litre version of the engine and a three-speed automatic transmission are optional. The body is unitized construction with bolt-on front fenders and hood. Wheelbase is 94.3 inches, height 52.3 inches and width 61.8 inches. A 13.3 gallon fuel tank is mounted below the rear underbody outside the car.

NEW!

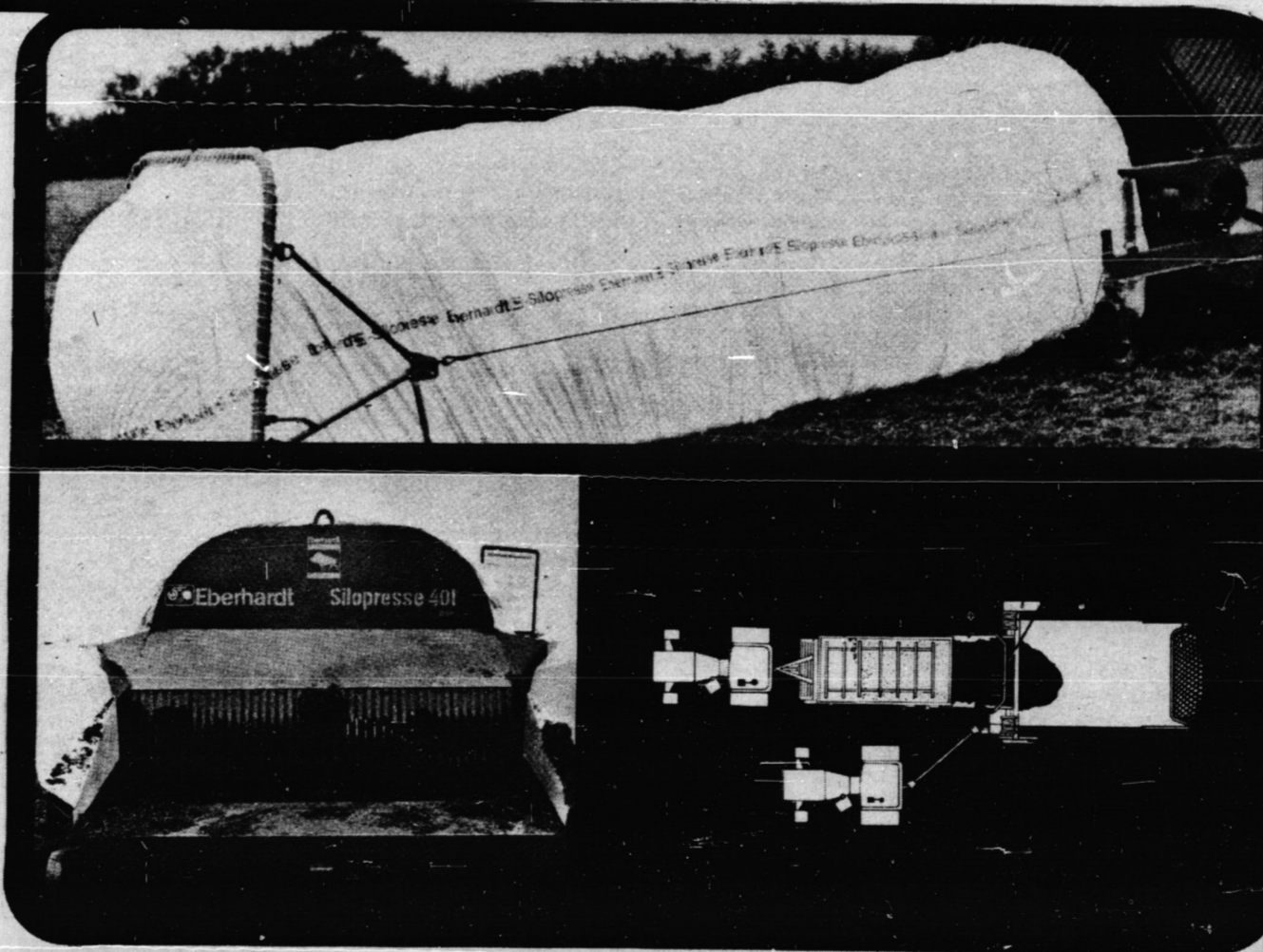
The SILOPRESS 401

AVAILABLE AT

RAM FERTILIZER LTD.

COURTLAND, ONT.

TEL. 842-5986



There are two basic components in the Eberhardt system—an easily transportable, tractor pto-driven press and 7 ft. 10 in. diameter plastic sack with a maximum length of 82 ft. and a storage capacity of between 75 and 100 tons, depending on the crop to be stored.

- Advantages of the system include:
- no capital outlay for horizontal or tower silos
 - unlimited sealed storage capacity
 - low labor requirement
 - stored material easily extracted for feeding
 - minimum wastage
 - no odor

Chopped material is fed into the 17 rpm press by any conventional storage box or dump wagon although a rear unloading unit is the most efficient.

The plastic sack is drawn over the shaping tunnel of the press. A tubular frame carrying rope netting and attached by steel ropes to tension drums on the Silopress is then set in position.

The sealed end of the sack is placed against the frame. During filling only feed pressure moves the press slowly forward, the rate and therefore the consolidation being controlled by adjustable drum braking on the pay-out of the steel ropes, leaving the filled sack on the ground.

TECHNICAL DATA

MAXIMUM DIMENSIONS	TRANSPORT POSITION	WORKING POSITION
	Width	7'8 1/2"
Length	13'7"	10'0"
Height	7'5"	6'6 1/2"
Tires	500x8	
Tire Pressure	maximum 84 psi	
Weight	4213 lbs.	
Tractor size required	35-50 hp	